

Having trouble viewing this email? [Click here](#)



Moisture never quits. Neither should your wall system.
Discover the strength of DELTA® DRY

Dear Recipient,

In February, cold temperatures, freeze-thaw cycles, snow accumulation, and limited drying conditions increase the risk of moisture entrapment and early envelope failure.

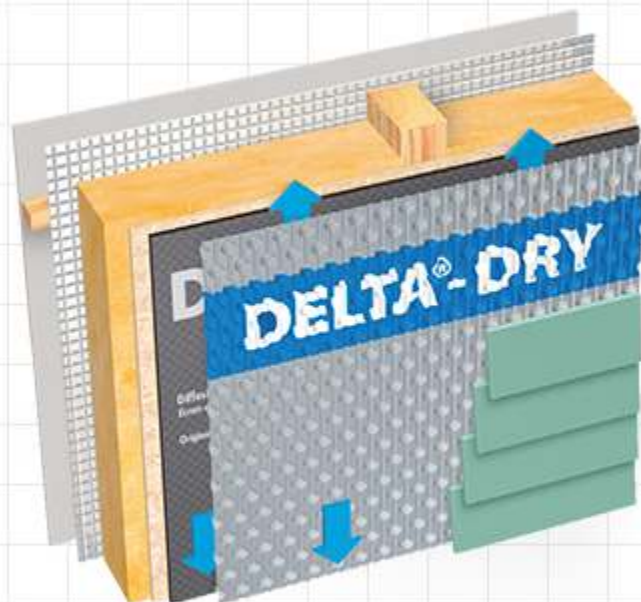
This month, we're emphasizing wall systems that provide dependable air, water, and moisture control during winter construction and early-year project phases, supporting durable performance from the start.

Our product spotlight shines on DELTA®-DRY, the two-sided ventilated rainscreen that blocks exterior water intrusion while giving interior water vapor a safe path out. Read on to discover how DELTA®-DRY keeps wall assemblies dry in every season and climate.

As always, we'd love to hear about what you're working on. If you're looking for a partner to help protect your latest project, [let's connect!](#)

A handwritten signature in black ink, which appears to read "Peter Barrett".

Peter Barrett
Product Manager
Dörken Systems Inc.



Product Spotlight:

Product Spotlight: DELTA®-DRY

Regardless of the project, season, or climate, builders are consistently faced with two challenges:

1. Impact of exterior water moving through a wall.
2. Water vapor within a wall that starts on the inside.

Reservoir claddings like stucco and manufactured stone, along with wet framing during construction, can lead to serious long-term moisture issues.

This is where DELTA®-DRY comes in. It's a two-sided ventilated rainscreen that protects against external moisture while allowing internal water vapor to escape.

[LEARN MORE](#)



Understanding Rainscreen Wall Systems

Join Dr. John Straube as he dives into the science behind rainscreen wall systems, and what a rainscreen system requires above all else to be effective.

He also details how DELTA®-DRY's unique application solves moisture problems in the most common wall types, especially absorbent claddings like stucco or manufactured stone.

[WATCH THE VIDEO](#)

Enhance your expertise at DELTA[®] Academy

Now's the time to elevate your architecture and construction expertise. At DELTA[®] Academy, you can unlock resources that help you exceed industry standards, streamline workflows, and embrace sustainable design. Stay ahead with cutting-edge techniques and gain the competitive edge you need. Let DELTA[®] ACADEMY be your ultimate resource.

[TAKE ME THERE](#)



Last year, we announced key upgrades to our most trusted air and moisture barriers — including **DELTA[®]-VENT SA** — giving crews more flexibility, better durability, and longer UV protection than ever before.

Haven't seen what changed? Read our quick recap of how these durability improvements help wall systems perform through real-world delays, tough weather, and modern specs.

[READ MORE](#)

Follow us to stay up to date



A **DÖRKEN**GROUP company
[dorken.com](https://www.dorken.com)

Dörken Systems Inc. 4655 Delta Way, Beamsville, Ontario L3J 0T6, Canada (905) 563-3255

[Unsubscribe](#)

Dörken Systems Inc. 4655 Delta Way, Beamsville, Ontario L3J 0T6, Canada (905) 563-3255