

SUBSTANTIAL EFFORT HAS BEEN MADE TO ENSURE THAT THE INFORMATION IN THIS DETAIL DRAWING IS ACCURATE. DÖRKEN SYSTEMS INC. CANNOT ACCEPT RESPONSIBILITY FOR ANY ERRORS OR OVERSIGHTS IN THE USE OF THIS MATERIAL OR IN THE PREPARATION OF ARCHITECTURAL OR ENGINEERING PLANS. THE DESIGN PROFESSIONAL MUST RECOGNIZE THAT NO DESIGN DETAIL CAN SUBSTITUTE FOR EXPERIENCED ENGINEERING AND PROFESSIONAL JUDGEMENT.

TITLE:

### DELTA®-DRAIN 2000 HI-X WITH FOUNDATION WALL AND FLOOR SLAB AT FOOTING LEVEL

DRAWN BY: Krzysztof Apriasz C. Tech., CPHC®

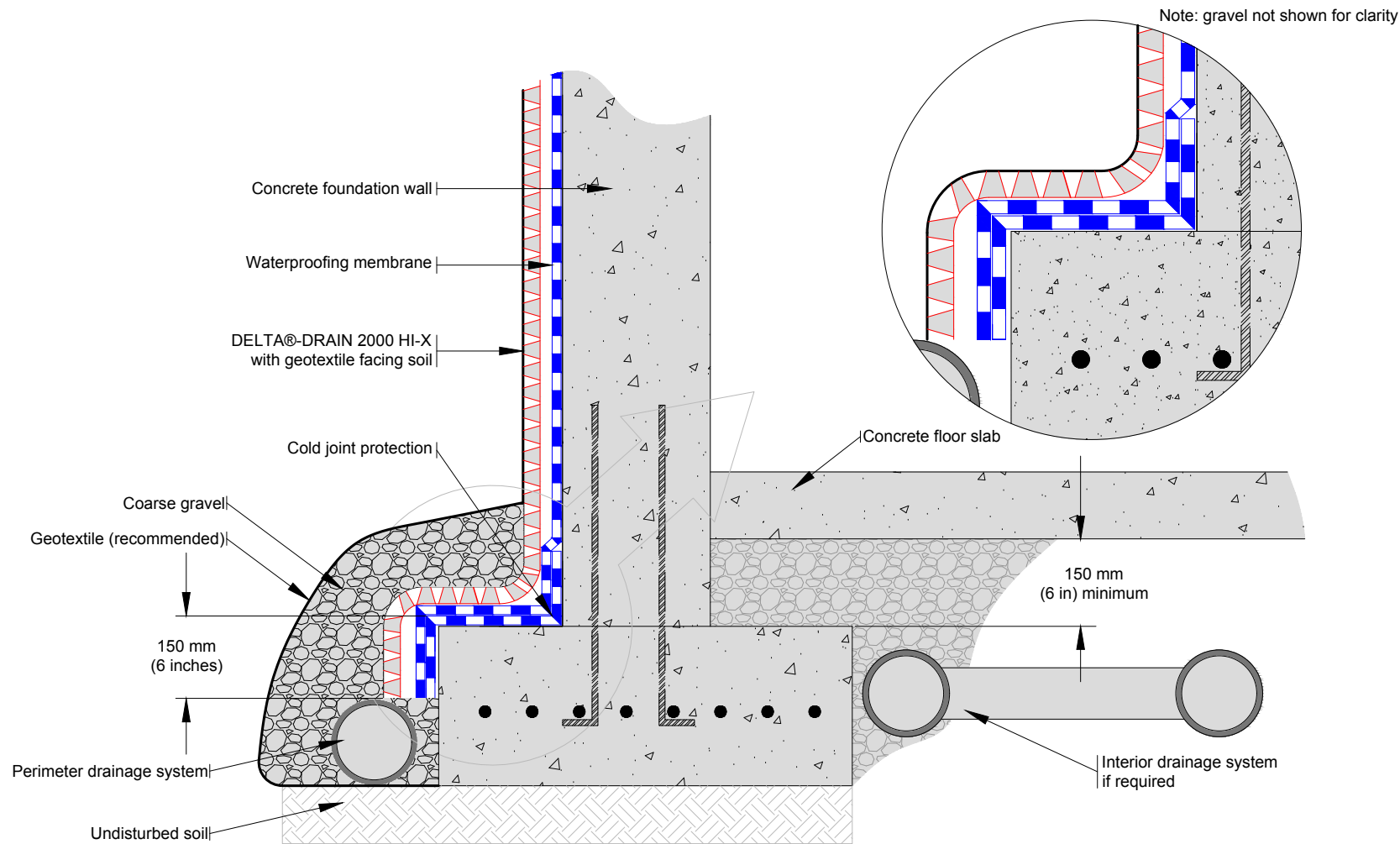
DATE: February 17, 2017  
SCALE: NTS

FILE NAME:  
DD2000\_1

 DÖRKEN

**DELTA®**

4655 DELTA WAY BEAMSVILLE, ON.  
L3J 0T6 CANADA



SUBSTANTIAL EFFORT HAS BEEN MADE TO ENSURE THAT THE INFORMATION IN THIS DETAIL DRAWING IS ACCURATE. DÖRKEN SYSTEMS INC. CANNOT ACCEPT RESPONSIBILITY FOR ANY ERRORS OR OVERSIGHTS IN THE USE OF THIS MATERIAL OR IN THE PREPARATION OF ARCHITECTURAL OR ENGINEERING PLANS. THE DESIGN PROFESSIONAL MUST RECOGNIZE THAT NO DESIGN DETAIL CAN SUBSTITUTE FOR EXPERIENCED ENGINEERING AND PROFESSIONAL JUDGEMENT.

TITLE:

**DELTA®-DRAIN 2000 HI-X WITH  
FOUNDATION WALL  
AND ELEVATED FLOOR SLAB**

DRAWN BY: Krzysztof Apriasz C. Tech., CPHC®

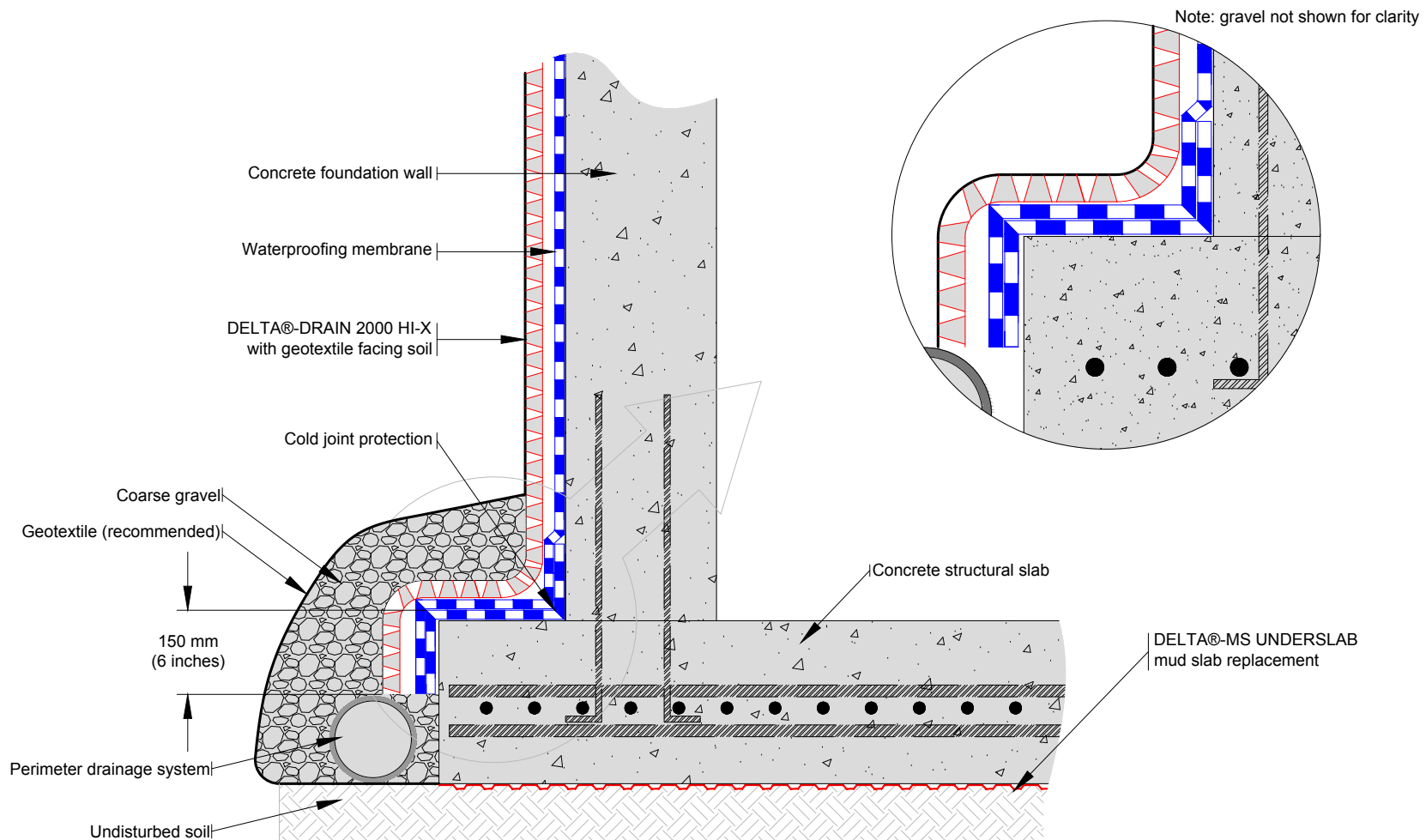
DATE: February 17, 2017  
SCALE: NTS

FILE NAME:  
DD2000\_2

**DÖRKEN**

**DELTA®**

4655 DELTA WAY BEAMSVILLE, ON.  
L3J 0T6 CANADA



SUBSTANTIAL EFFORT HAS BEEN MADE TO ENSURE THAT THE INFORMATION IN THIS DETAIL DRAWING IS ACCURATE. DÖRKEN SYSTEMS INC. CANNOT ACCEPT RESPONSIBILITY FOR ANY ERRORS OR OVERSIGHTS IN THE USE OF THIS MATERIAL OR IN THE PREPARATION OF ARCHITECTURAL OR ENGINEERING PLANS. THE DESIGN PROFESSIONAL MUST RECOGNIZE THAT NO DESIGN DETAIL CAN SUBSTITUTE FOR EXPERIENCED ENGINEERING AND PROFESSIONAL JUDGEMENT.

TITLE:

## DELTA®-DRAIN 2000 HI-X WITH FOUNDATION WALL ON STRUCTURAL SLAB

DRAWN BY: Krzysztof Apriasz C. Tech., CPHC®

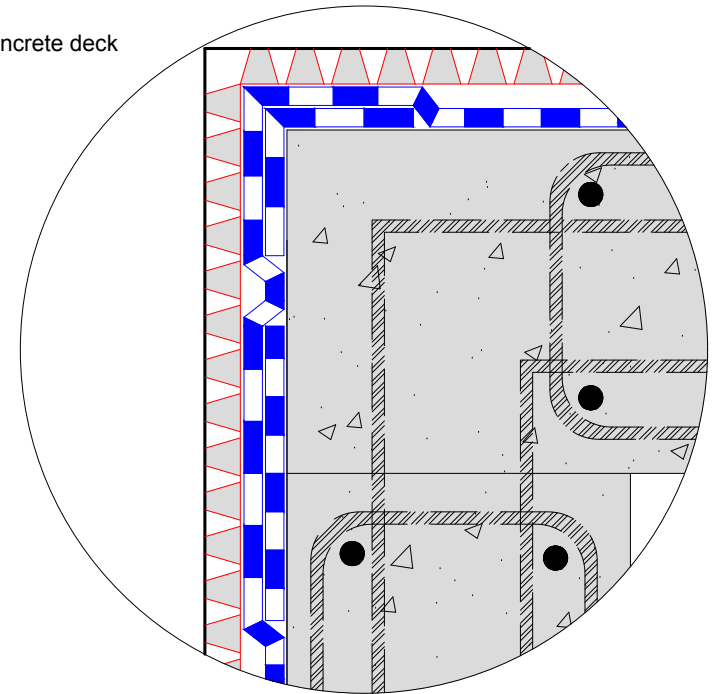
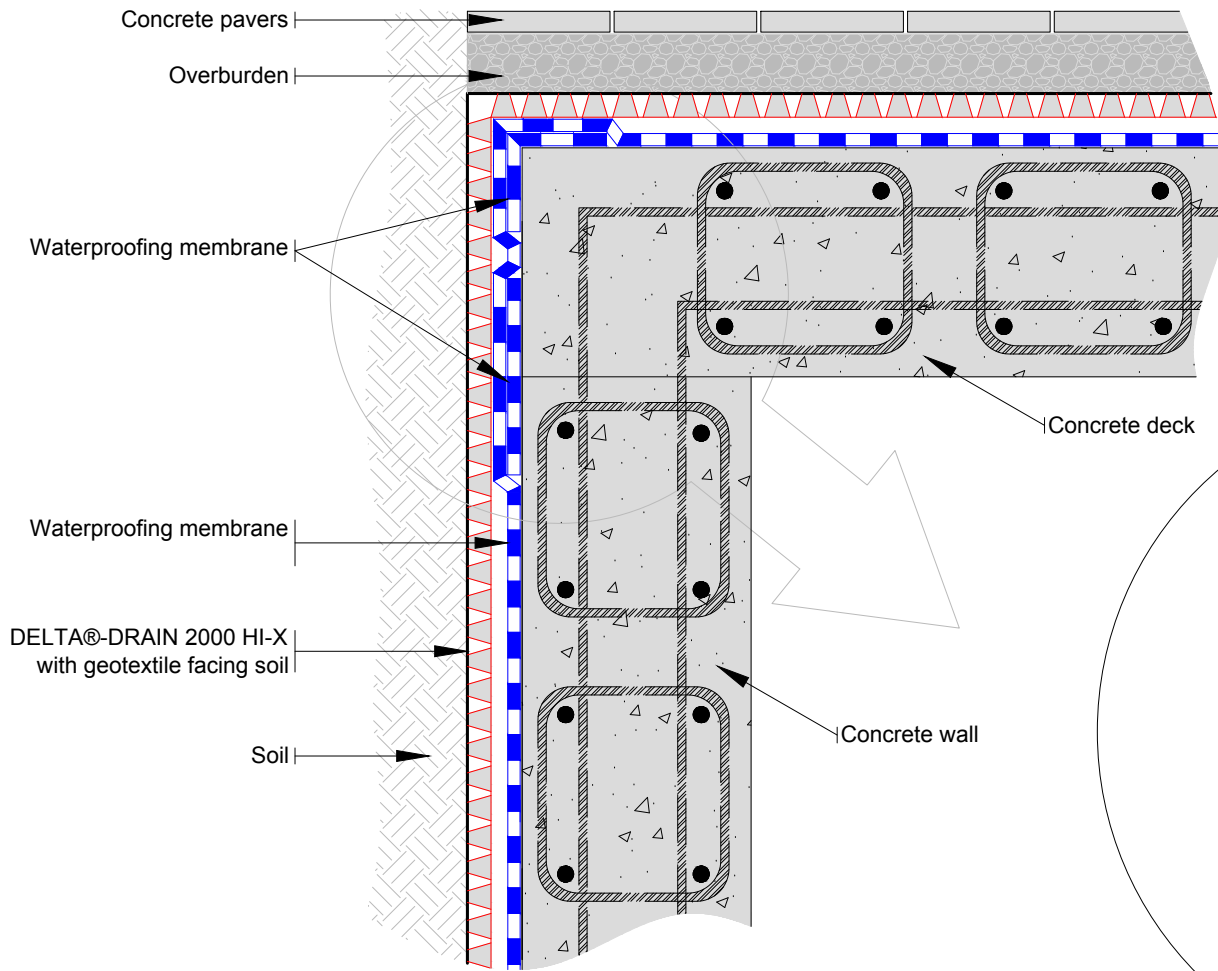
DATE: February 17, 2017  
SCALE: NTS

FILE NAME:  
DD2000\_3

 DÖRKEN

**DELTA®**

4655 DELTA WAY BEAMSVILLE, ON.  
L3J 0T6 CANADA



Note: soil and pavers not shown for clarity

SUBSTANTIAL EFFORT HAS BEEN MADE TO ENSURE THAT THE INFORMATION IN THIS DETAIL DRAWING IS ACCURATE. DÖRKEN SYSTEMS INC. CANNOT ACCEPT RESPONSIBILITY FOR ANY ERRORS OR OVERSIGHTS IN THE USE OF THIS MATERIAL OR IN THE PREPARATION OF ARCHITECTURAL OR ENGINEERING PLANS. THE DESIGN PROFESSIONAL MUST RECOGNIZE THAT NO DESIGN DETAIL CAN SUBSTITUTE FOR EXPERIENCED ENGINEERING AND PROFESSIONAL JUDGEMENT.

TITLE:

### DELTA®-DRAIN 2000 HI-X WITH PLAZA DECK TO WALL TIE-IN DETAIL

DRAWN BY: Krzysztof Apriasz C. Tech., CPHC®

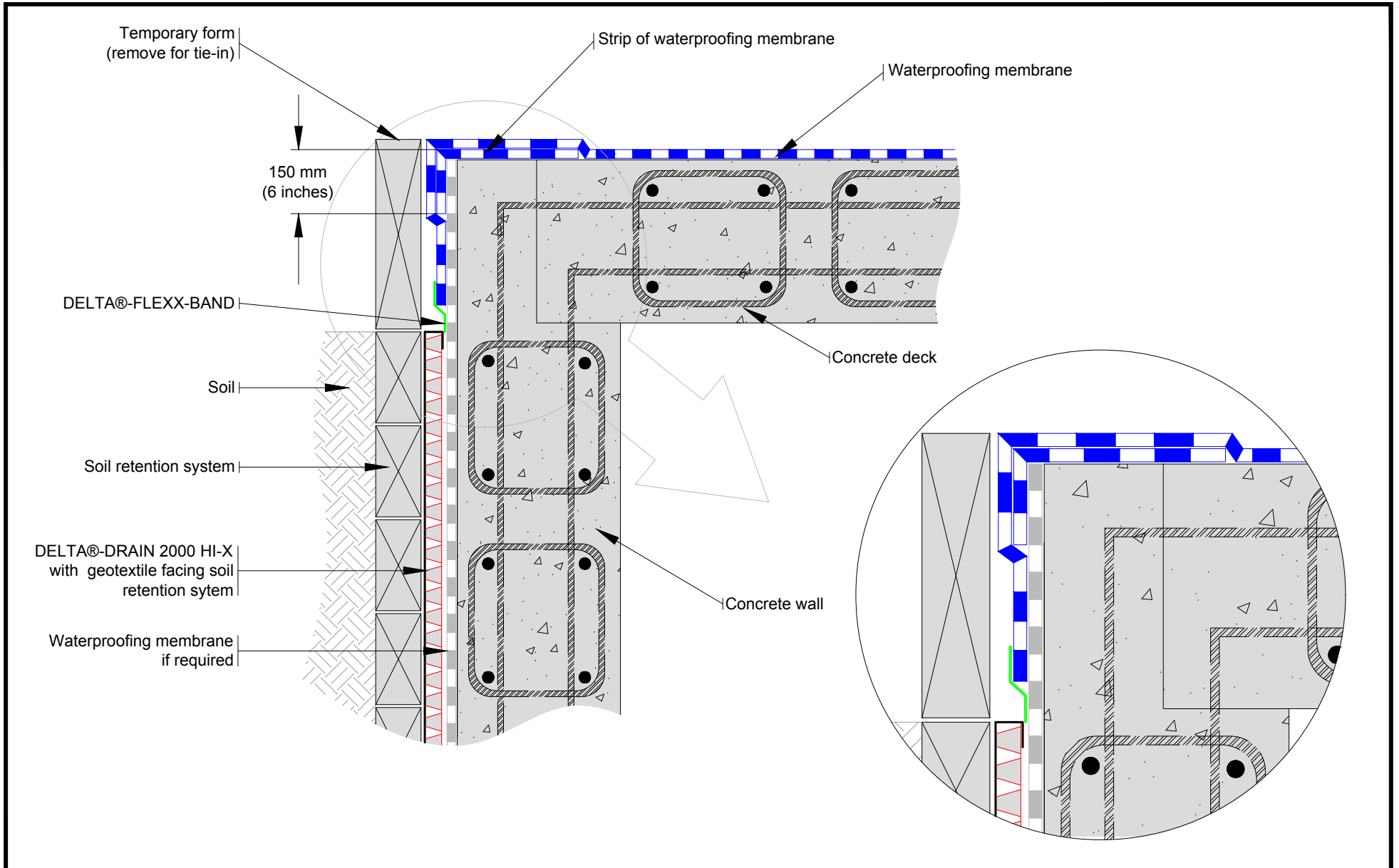
DATE: February 17, 2017  
SCALE: NTS

FILE NAME:  
DD2000\_4

 DÖRKEN

**DELTA®**

4655 DELTA WAY BEAMSVILLE, ON.  
L3J 0T6 CANADA



SUBSTANTIAL EFFORT HAS BEEN MADE TO ENSURE THAT THE INFORMATION IN THIS DETAIL DRAWING IS ACCURATE. DÖRKEN SYSTEMS INC. CANNOT ACCEPT RESPONSIBILITY FOR ANY ERRORS OR OVERSIGHTS IN THE USE OF THIS MATERIAL OR IN THE PREPARATION OF ARCHITECTURAL OR ENGINEERING PLANS. THE DESIGN PROFESSIONAL MUST RECOGNIZE THAT NO DESIGN DETAIL CAN SUBSTITUTE FOR EXPERIENCED ENGINEERING AND PROFESSIONAL JUDGEMENT.

TITLE:

DELTA®-DRAIN 2000 HI-X with PLAZA DECK  
WATERPROOFING TIE-IN TO  
VERTICAL BLIND SIDE WATERPROOFING DETAIL

DRAWN BY: Krzysztof Apriasz C. Tech., CPHC®

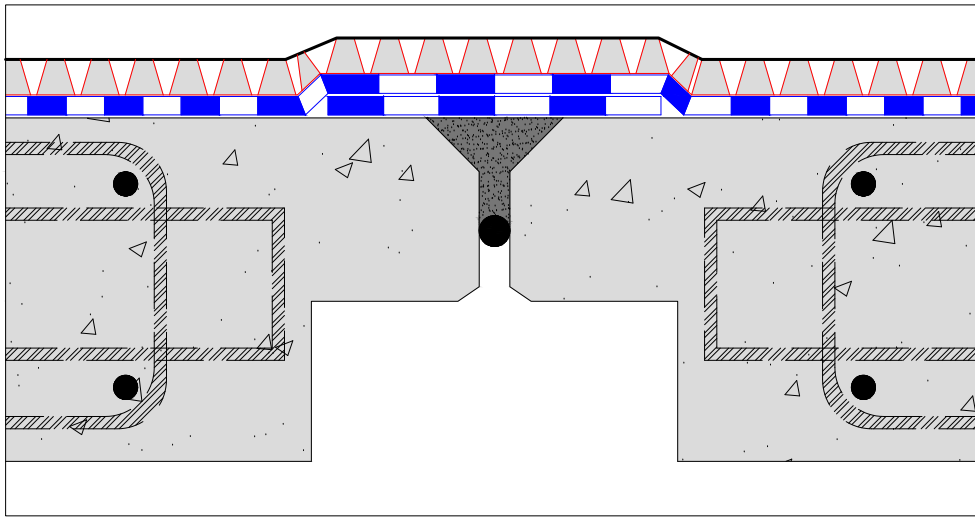
DATE: February 17, 2017  
SCALE: NTS

FILE NAME:  
DD2000\_5

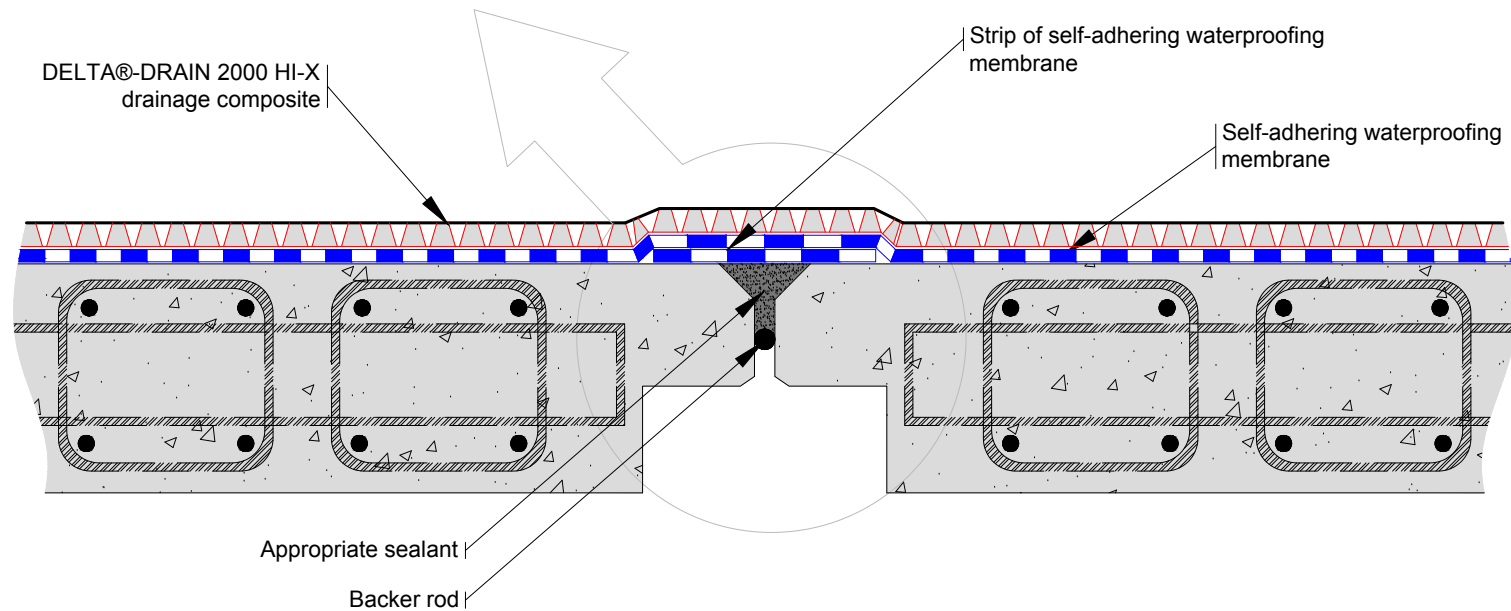
 DÖRKEN

**DELTA®**

4655 DELTA WAY BEAMSVILLE, ON.  
L3J 0T6 CANADA



Note: For joint where movement is expected (active joints) see expansion joint cover detail



SUBSTANTIAL EFFORT HAS BEEN MADE TO ENSURE THAT THE INFORMATION IN THIS DETAIL DRAWING IS ACCURATE. DÖRKEN SYSTEMS INC. CANNOT ACCEPT RESPONSIBILITY FOR ANY ERRORS OR OVERSIGHTS IN THE USE OF THIS MATERIAL OR IN THE PREPARATION OF ARCHITECTURAL OR ENGINEERING PLANS. THE DESIGN PROFESSIONAL MUST RECOGNIZE THAT NO DESIGN DETAIL CAN SUBSTITUTE FOR EXPERIENCED ENGINEERING AND PROFESSIONAL JUDGEMENT.

TITLE:

### DELTA®-DRAIN 2000 HI-X WITH PASSIVE JOINT COVER DETAIL

DRAWN BY: Krzysztof Apriasz C. Tech., CPHC®

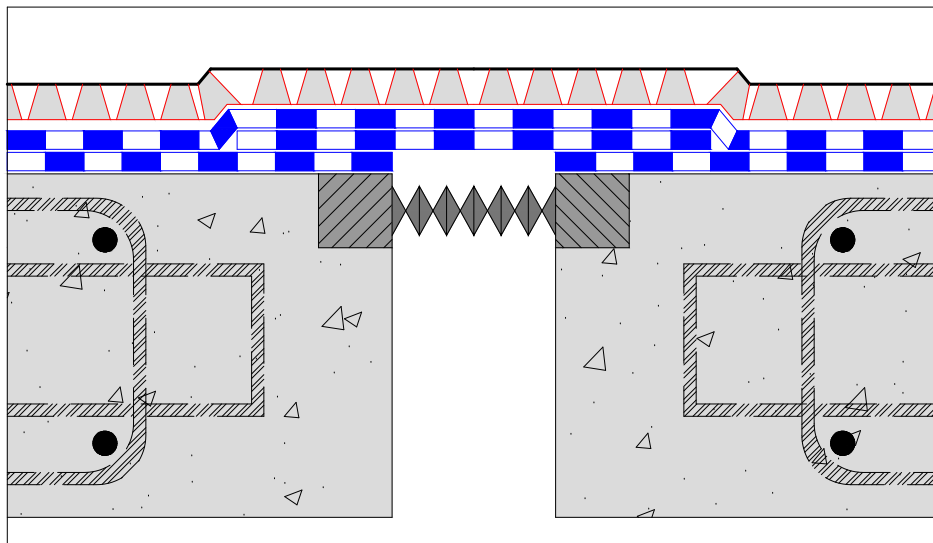
DATE: February 17, 2017  
SCALE: NTS

FILE NAME:  
DD2000\_6

 DÖRKEN

**DELTA®**

4655 DELTA WAY BEAMSVILLE, ON.  
L3J 0T6 CANADA

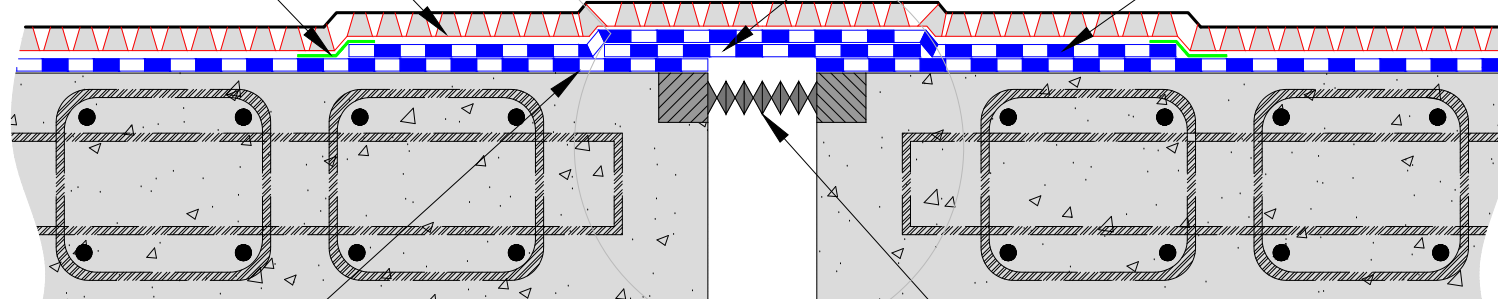


DELTA®-DRAIN 2000 HI-X  
drainage composite

DELTA®-FLEXX-BAND  
termination membrane

Inverted strip of self-adhering  
waterproofing membrane

Self-adhering waterproofing  
membrane



DELTA®-THENE membrane  
to edge of expansion joint

Expansion joint system  
by others

SUBSTANTIAL EFFORT HAS BEEN MADE TO ENSURE THAT THE INFORMATION IN THIS DETAIL DRAWING IS ACCURATE. DÖRKEN SYSTEMS INC. CANNOT ACCEPT RESPONSIBILITY FOR ANY ERRORS OR OVERSIGHTS IN THE USE OF THIS MATERIAL OR IN THE PREPARATION OF ARCHITECTURAL OR ENGINEERING PLANS. THE DESIGN PROFESSIONAL MUST RECOGNIZE THAT NO DESIGN DETAIL CAN SUBSTITUTE FOR EXPERIENCED ENGINEERING AND PROFESSIONAL JUDGEMENT.

TITLE:

DELTA®-DRAIN 2000 HI-X WITH EXPANSION JOINT COVER  
DECK DETAIL WITH MOVEMENT LESS  
THAN 13 mm ( $\frac{1}{2}$  INCHES)

DRAWN BY: Krzysztof Apiasz C. Tech., CPHC®

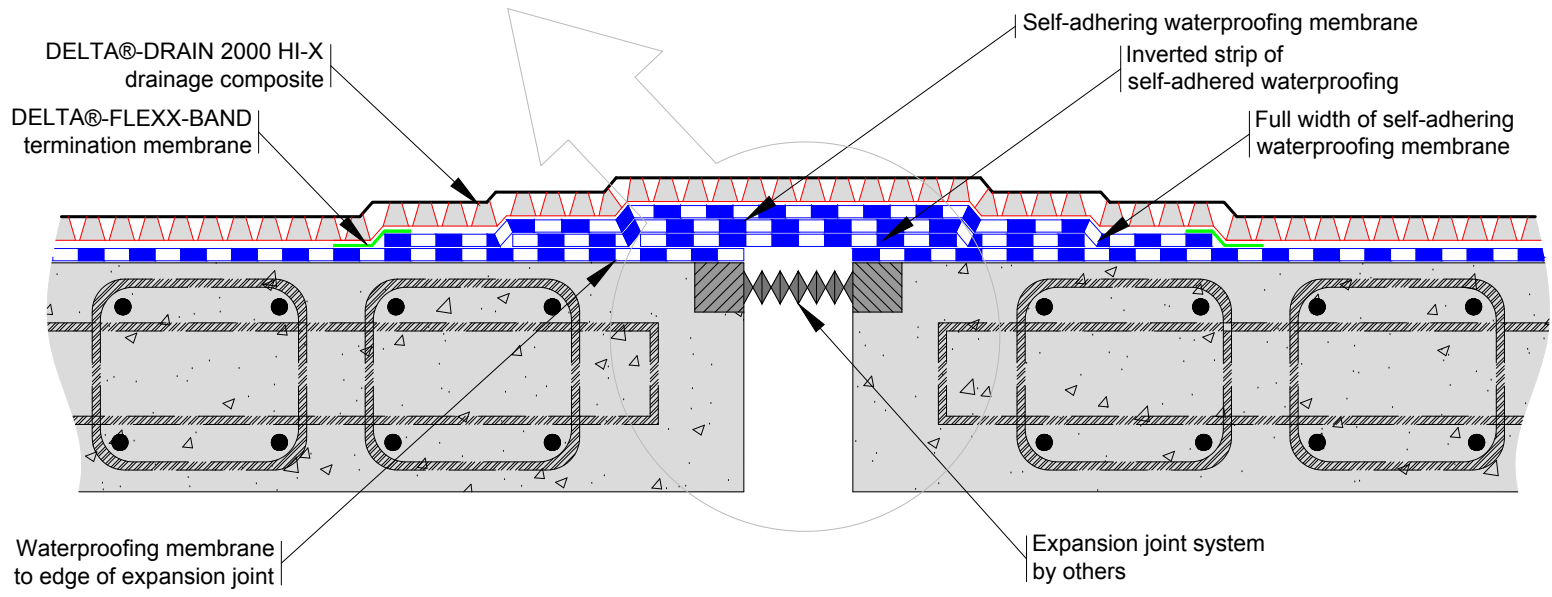
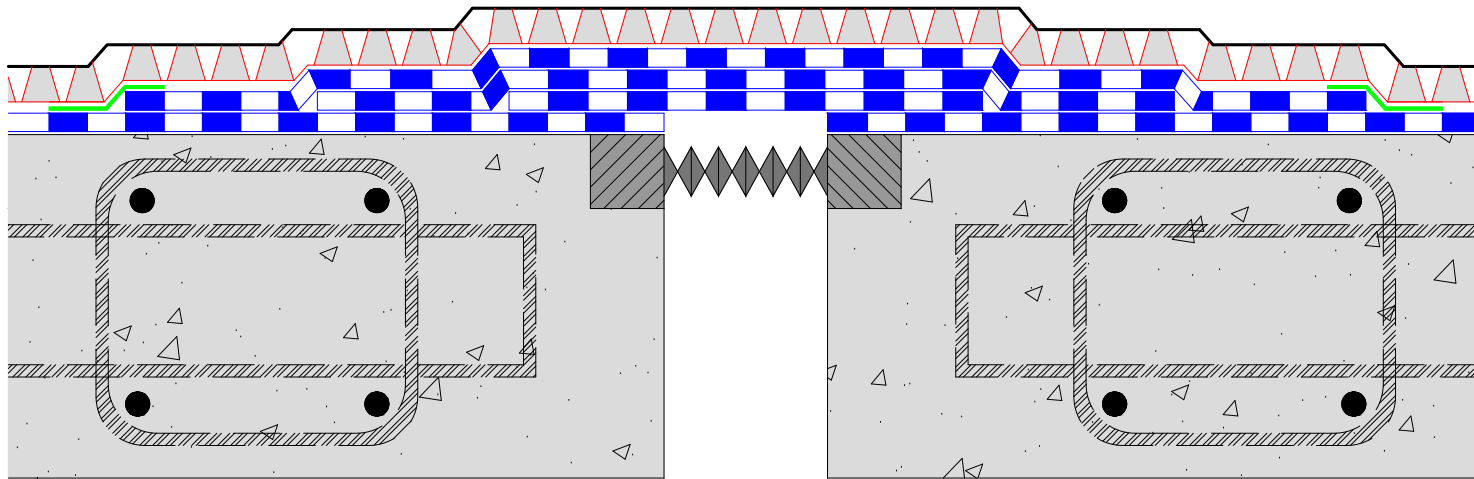
DATE: February 17, 2017  
SCALE: NTS

FILE NAME:  
DD2000\_7

 DÖRKEN

**DELTA®**

4655 DELTA WAY BEAMSVILLE, ON.  
L3J 0T6 CANADA



SUBSTANTIAL EFFORT HAS BEEN MADE TO ENSURE THAT THE INFORMATION IN THIS DETAIL DRAWING IS ACCURATE. DÖRKEN SYSTEMS INC. CANNOT ACCEPT RESPONSIBILITY FOR ANY ERRORS OR OVERSIGHTS IN THE USE OF THIS MATERIAL OR IN THE PREPARATION OF ARCHITECTURAL OR ENGINEERING PLANS. THE DESIGN PROFESSIONAL MUST RECOGNIZE THAT NO DESIGN DETAIL CAN SUBSTITUTE FOR EXPERIENCED ENGINEERING AND PROFESSIONAL JUDGEMENT.

TITLE:

**DELTA®-DRAIN 2000 HI-X WITH EXPANSION JOINT COVER  
DECK DETAIL WITH MOVEMENT MORE  
THAN-13 mm (½ INCHES)**

DRAWN BY: Krzysztof Apriasz C. Tech., CPHC®

DATE: February 17, 2017  
SCALE: NTS

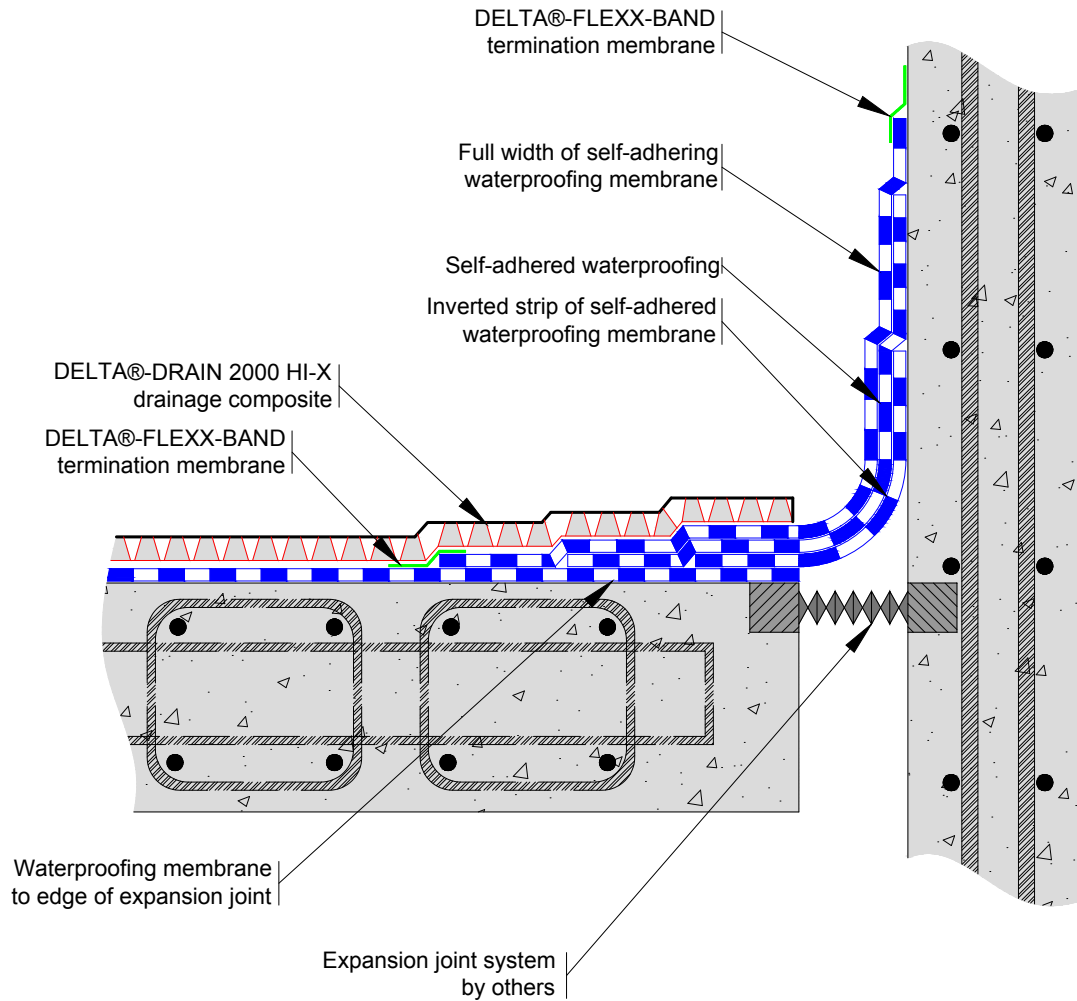
FILE NAME:  
DD2000\_8

**DÖRKEN**

**DELTA®**

4655 DELTA WAY BEAMSVILLE, ON.  
L3J 0T6 CANADA





SUBSTANTIAL EFFORT HAS BEEN MADE TO ENSURE THAT THE INFORMATION IN THIS DETAIL DRAWING IS ACCURATE. DÖRKEN SYSTEMS INC. CANNOT ACCEPT RESPONSIBILITY FOR ANY ERRORS OR OVERSIGHTS IN THE USE OF THIS MATERIAL OR IN THE PREPARATION OF ARCHITECTURAL OR ENGINEERING PLANS. THE DESIGN PROFESSIONAL MUST RECOGNIZE THAT NO DESIGN DETAIL CAN SUBSTITUTE FOR EXPERIENCED ENGINEERING AND PROFESSIONAL JUDGEMENT.

TITLE:

DELTA@-DRAIN 2000 HI-X EXPANSION  
JOINT COVER DECK TO WALL JUNCTION  
DETAIL

DRAWN BY: Krzysztof Apiasz C. Tech., CPHC®

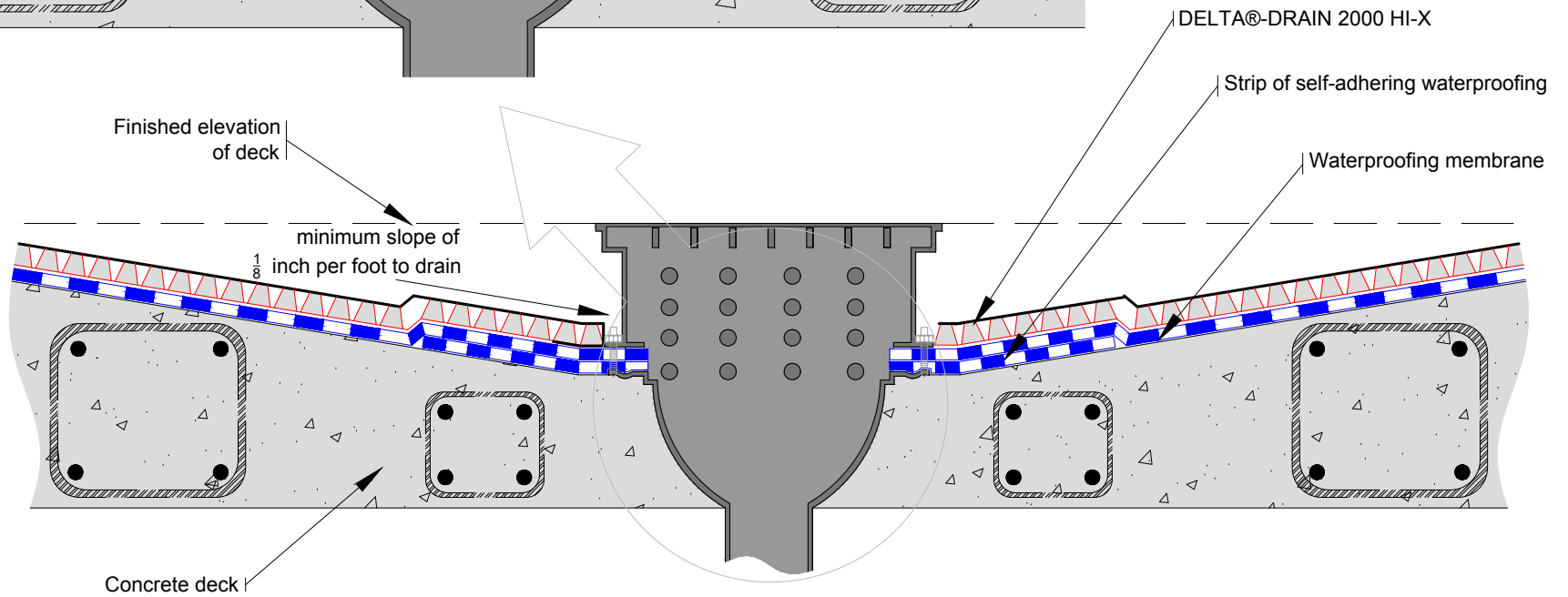
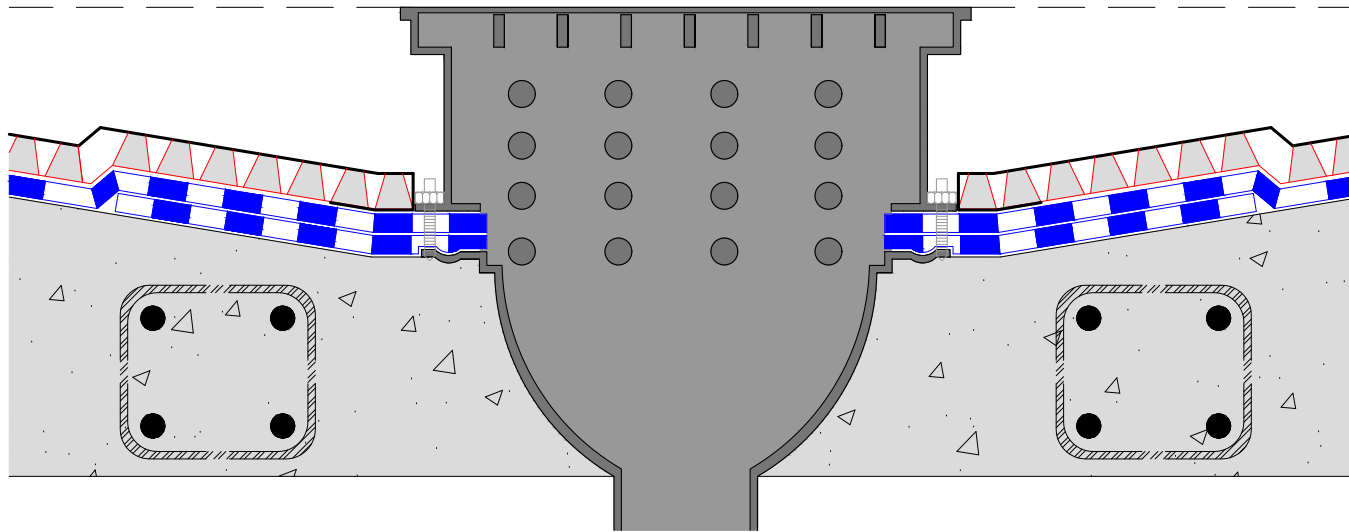
Date: February 18, 2011

File Name: DD2000\_09

 DÖRKEN

**DELTA**®

4655 DELTA WAY BEAMSVILLE, ON.  
L3J 0T6 CANADA



SUBSTANTIAL EFFORT HAS BEEN MADE TO ENSURE THAT THE INFORMATION IN THIS DETAIL DRAWING IS ACCURATE. DÖRKEN SYSTEMS INC. CANNOT ACCEPT RESPONSIBILITY FOR ANY ERRORS OR OVERSIGHTS IN THE USE OF THIS MATERIAL OR IN THE PREPARATION OF ARCHITECTURAL OR ENGINEERING PLANS. THE DESIGN PROFESSIONAL MUST RECOGNIZE THAT NO DESIGN DETAIL CAN SUBSTITUTE FOR EXPERIENCED ENGINEERING AND PROFESSIONAL JUDGEMENT.

TITLE:

DELTA®-DRAIN 2000 HI-X WITH TYPICAL DRAIN  
DETAIL

DRAWN BY: Krzysztof Apiasz C. Tech., CPHC®

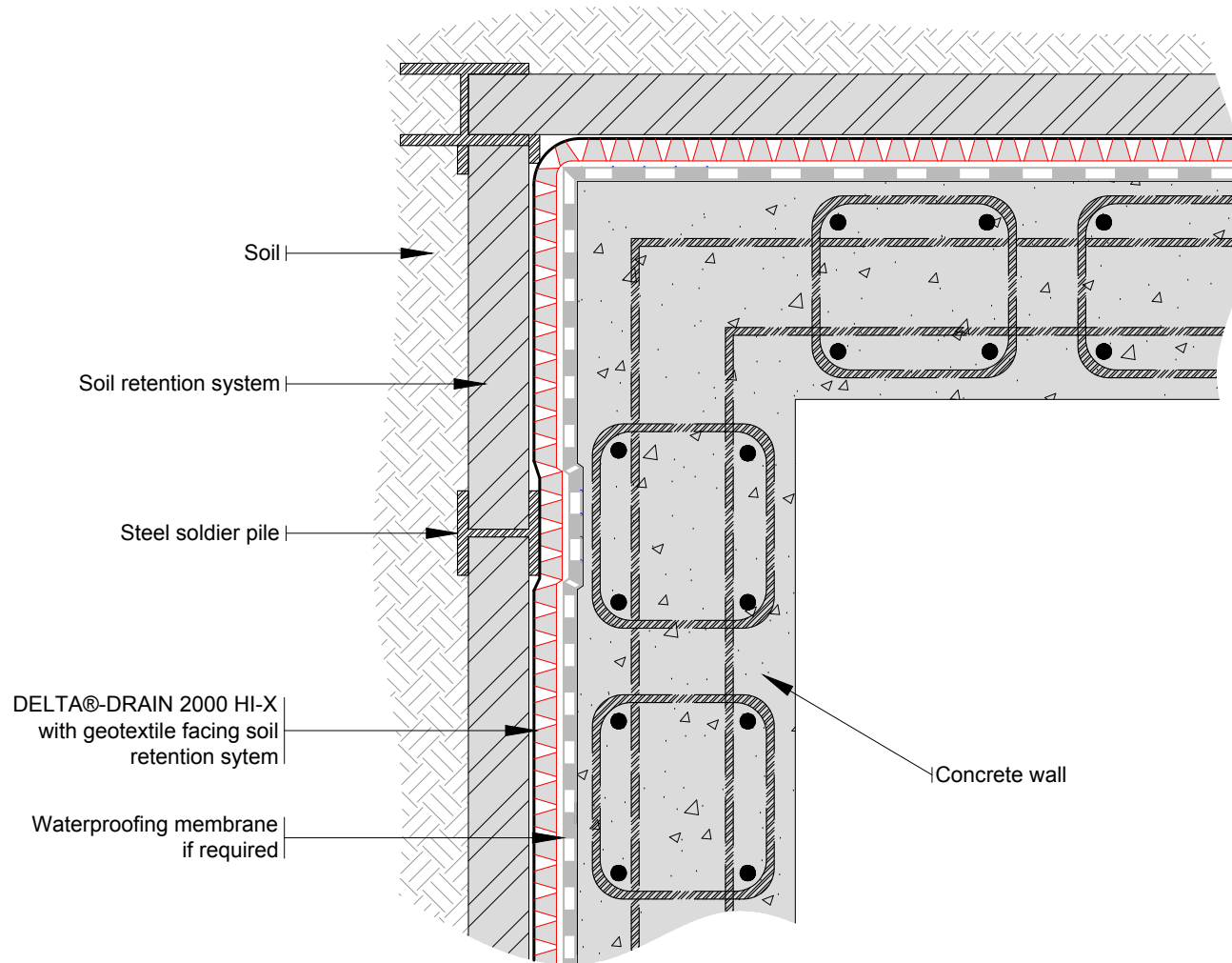
DATE: February 17, 2017  
SCALE: NTS

FILE NAME:  
DD2000\_10

 DÖRKEN

**DELTA®**

4655 DELTA WAY BEAMSVILLE, ON.  
L3J 0T6 CANADA



SUBSTANTIAL EFFORT HAS BEEN MADE TO ENSURE THAT THE INFORMATION IN THIS DETAIL DRAWING IS ACCURATE. DÖRKEN SYSTEMS INC. CANNOT ACCEPT RESPONSIBILITY FOR ANY ERRORS OR OVERSIGHTS IN THE USE OF THIS MATERIAL OR IN THE PREPARATION OF ARCHITECTURAL OR ENGINEERING PLANS. THE DESIGN PROFESSIONAL MUST RECOGNIZE THAT NO DESIGN DETAIL CAN SUBSTITUTE FOR EXPERIENCED ENGINEERING AND PROFESSIONAL JUDGEMENT.

TITLE:

### TYPICAL CORNER DETAIL DELTA®-DRAIN 2000 HI-X

DRAWN BY: Krzysztof Apriasz C. Tech., CPHC®

DATE: February 17, 2017  
SCALE: NTS

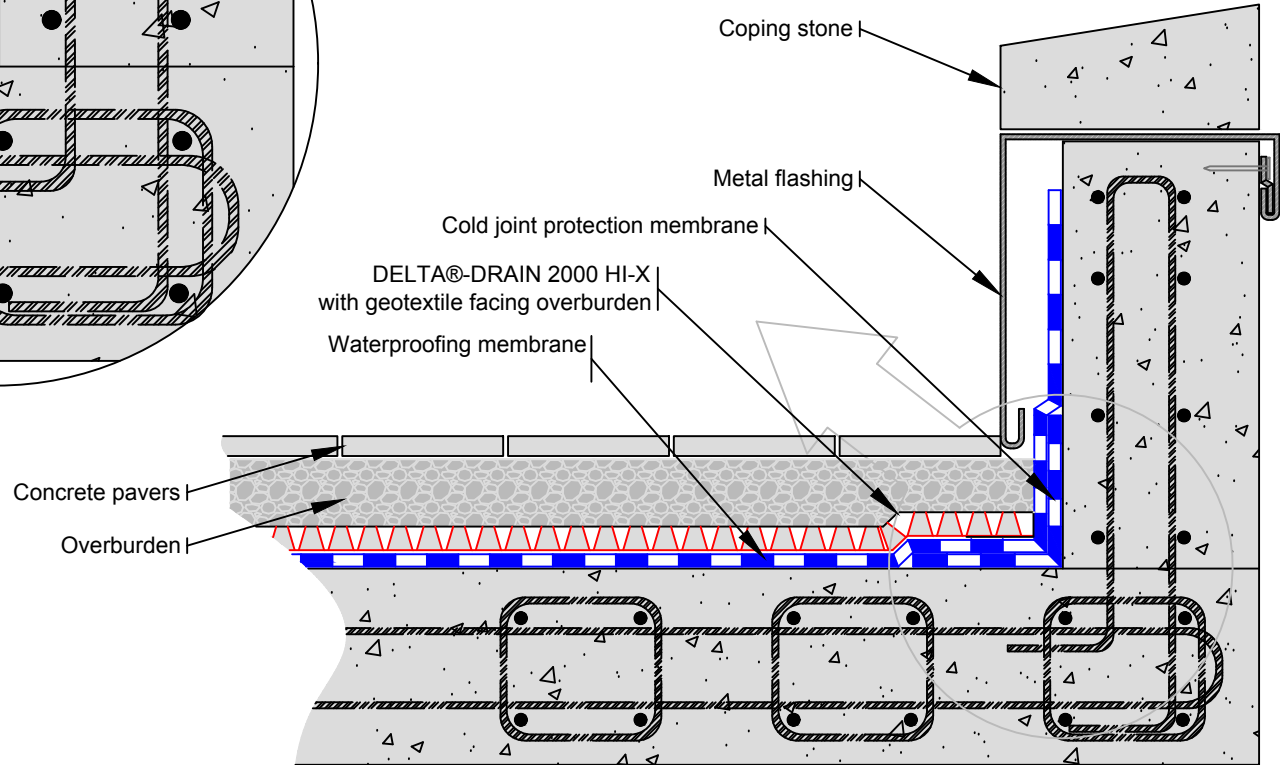
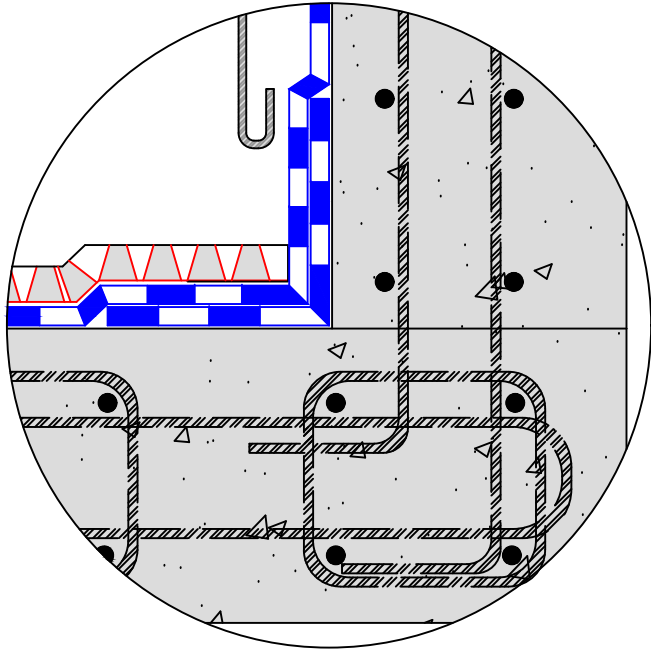
FILE NAME:  
DD2000\_13

 DÖRKEN

**DELTA®**

4655 DELTA WAY BEAMSVILLE, ON.  
L3J 0T6 CANADA

Note: overburden not shown for clarity



SUBSTANTIAL EFFORT HAS BEEN MADE TO ENSURE THAT THE INFORMATION IN THIS DETAIL DRAWING IS ACCURATE. COSELLA-DORKEN PRODUCTS INC. CANNOT ACCEPT RESPONSIBILITY FOR ANY ERRORS OR OVERSIGHTS IN THE USE OF THIS MATERIAL OR IN THE PREPARATION OF ARCHITECTURAL OR ENGINEERING PLANS. THE DESIGN PROFESSIONAL MUST RECOGNIZE THAT NO DESIGN DETAIL CAN SUBSTITUTE FOR EXPERIENCED ENGINEERING AND PROFESSIONAL JUDGEMENT.

TITLE:

TYPICAL PARAPET DETAIL WITH  
DELTA®-DRAIN 2000 HI-X

DRAWN BY: Krzysztof Apriasz C. Tech., CPHC®

DATE: February 17, 2017  
SCALE: NTS

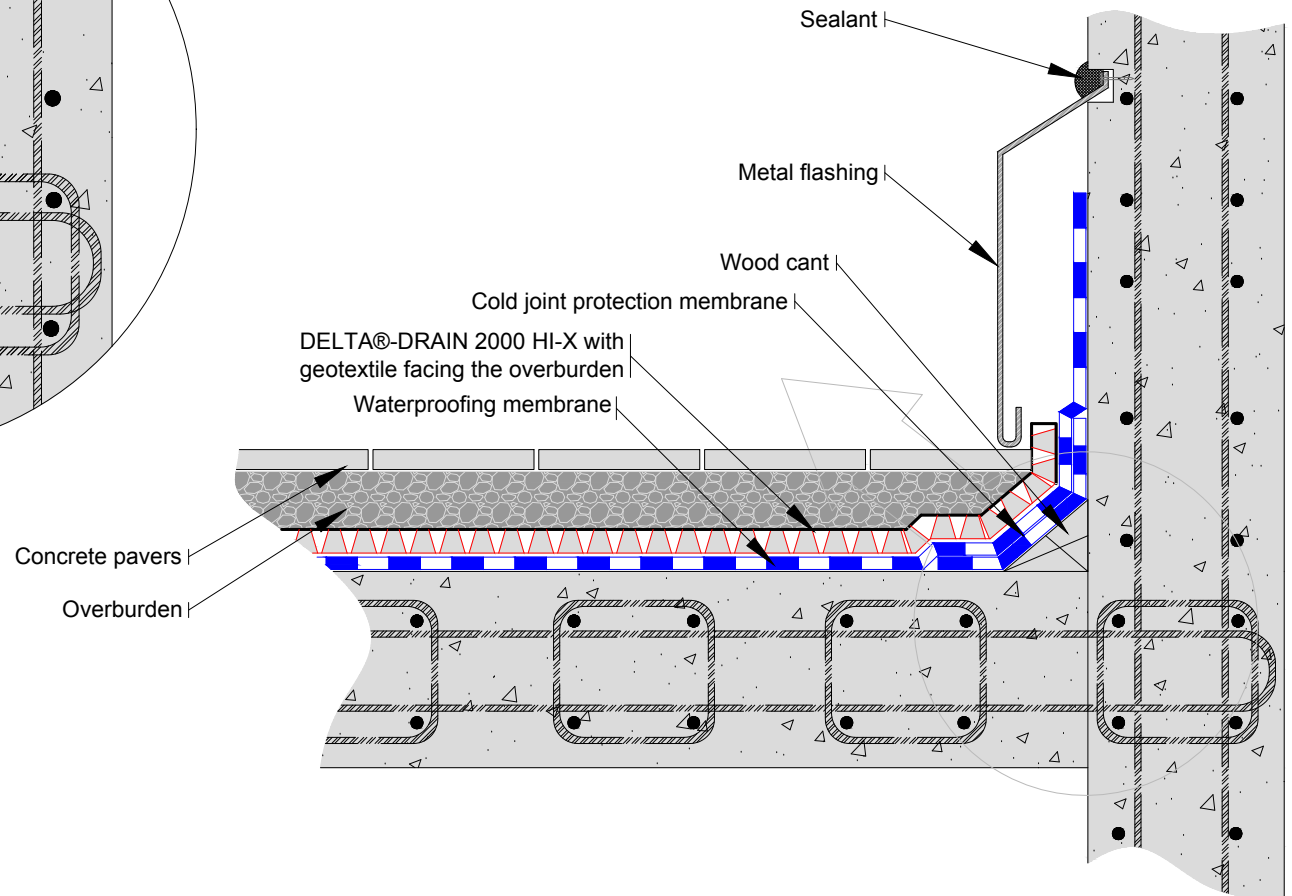
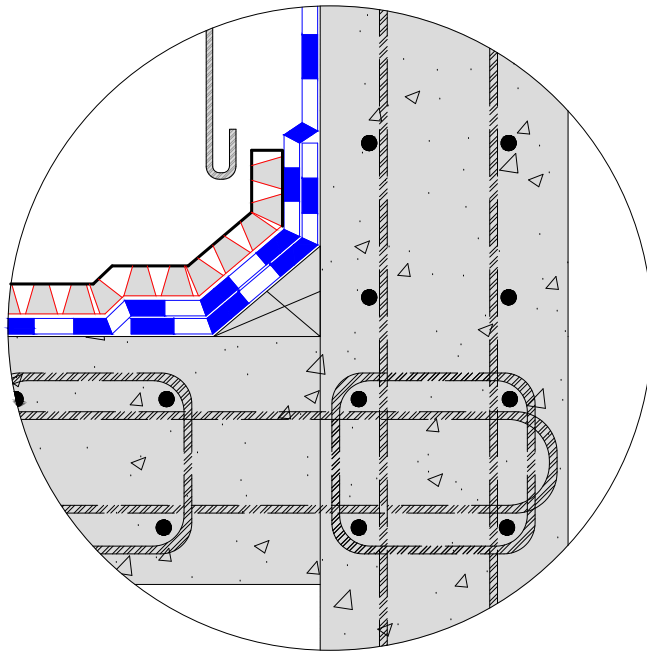
FILE NAME:  
DD2000\_14

 DÖRKEN

**DELTA®**

4655 DELTA WAY BEAMSVILLE, ON.  
L3J 0T6 CANADA

Note: overburden not shown for clarity



SUBSTANTIAL EFFORT HAS BEEN MADE TO ENSURE THAT THE INFORMATION IN THIS DETAIL DRAWING IS ACCURATE. DÖRKEN SYSTEMS INC. CANNOT ACCEPT RESPONSIBILITY FOR ANY ERRORS OR OVERSIGHTS IN THE USE OF THIS MATERIAL OR IN THE PREPARATION OF ARCHITECTURAL OR ENGINEERING PLANS. THE DESIGN PROFESSIONAL MUST RECOGNIZE THAT NO DESIGN DETAIL CAN SUBSTITUTE FOR EXPERIENCED ENGINEERING AND PROFESSIONAL JUDGEMENT.

TITLE:

### TYPICAL ROOF EDGE TERMINATION DETAIL WITH DELTA®-DRAIN 2000 HI-X

DRAWN BY: Krzysztof Apriasz C. Tech., CPHC®

DATE: February 17, 2017  
SCALE: NTS

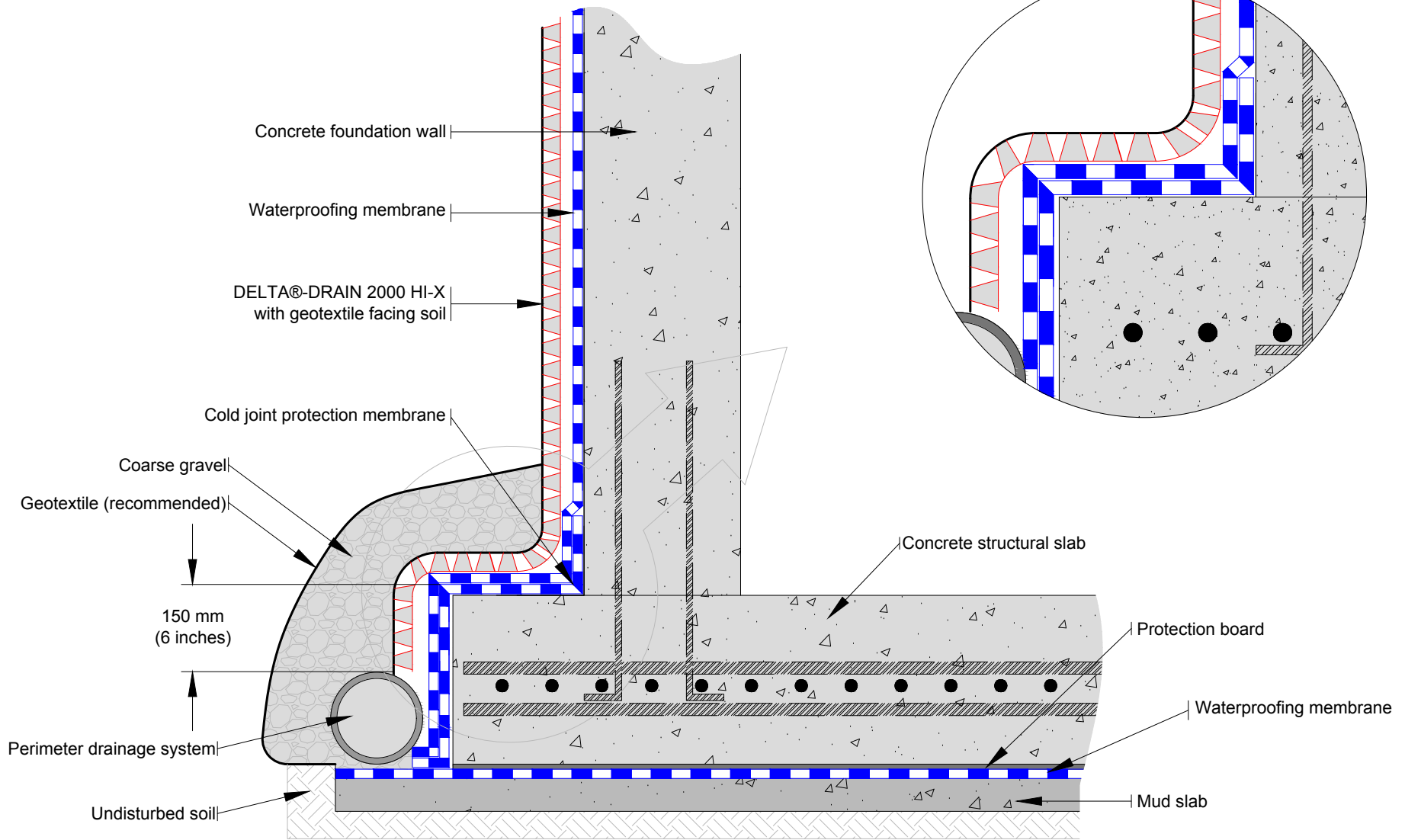
FILE NAME:  
DD2000\_15

 DÖRKEN

**DELTA®**

4655 DELTA WAY BEAMSVILLE, ON.  
L3J 0T6 CANADA

Note: gravel not shown for clarity



SUBSTANTIAL EFFORT HAS BEEN MADE TO ENSURE THAT THE INFORMATION IN THIS DETAIL DRAWING IS ACCURATE. DÖRKEN SYSTEMS INC. CANNOT ACCEPT RESPONSIBILITY FOR ANY ERRORS OR OVERSIGHTS IN THE USE OF THIS MATERIAL OR IN THE PREPARATION OF ARCHITECTURAL OR ENGINEERING PLANS. THE DESIGN PROFESSIONAL MUST RECOGNIZE THAT NO DESIGN DETAIL CAN SUBSTITUTE FOR EXPERIENCED ENGINEERING AND PROFESSIONAL JUDGEMENT.

TITLE:

### DELTA®-DRAIN 2000 HI-X WITH SPLIT SLAB WATERPROOFING

DRAWN BY: Krzysztof Apiasz C. Tech., CPHC®

DATE: February 17, 2017  
SCALE: NTS

FILE NAME:  
DD2000\_16

 DÖRKEN

**DELTA®**

4655 DELTA WAY BEAMSVILLE, ON.  
L3J 0T6 CANADA