

# Wall Assembly 1 - Steel Frame Less Than 2 Inches of Exterior Insulation - Light Cladding

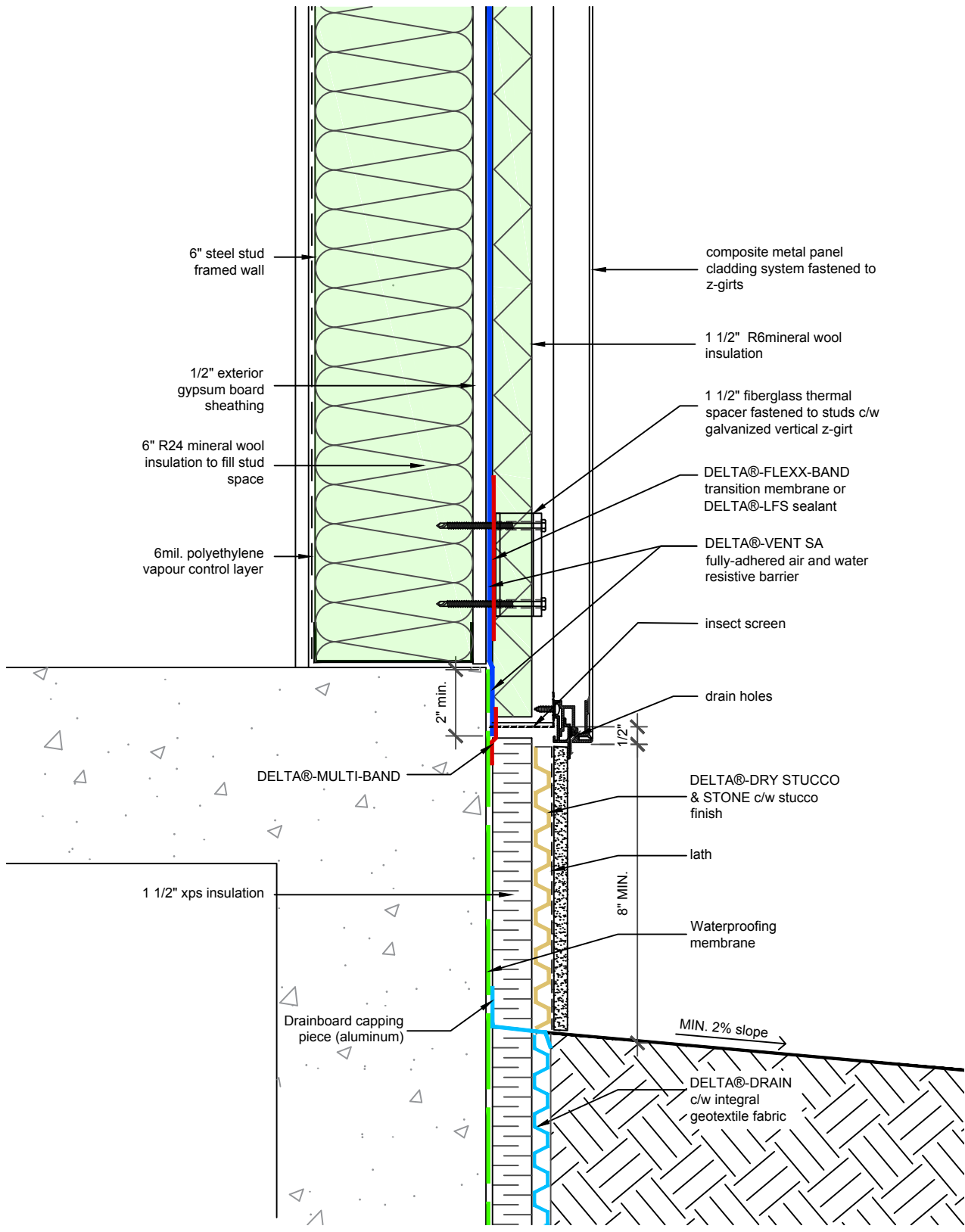
P R E M I U M Q U A L I T Y

Dörken Systems Inc. 4655 Delta Way Beamsville, Ontario L3J 0T6

1-888-4 DELTA 4, (905) 563-3255 Fax: (905) 563-5582

info@dorken.com, www.dorken.com

A **DÖRKEN** GROUP company



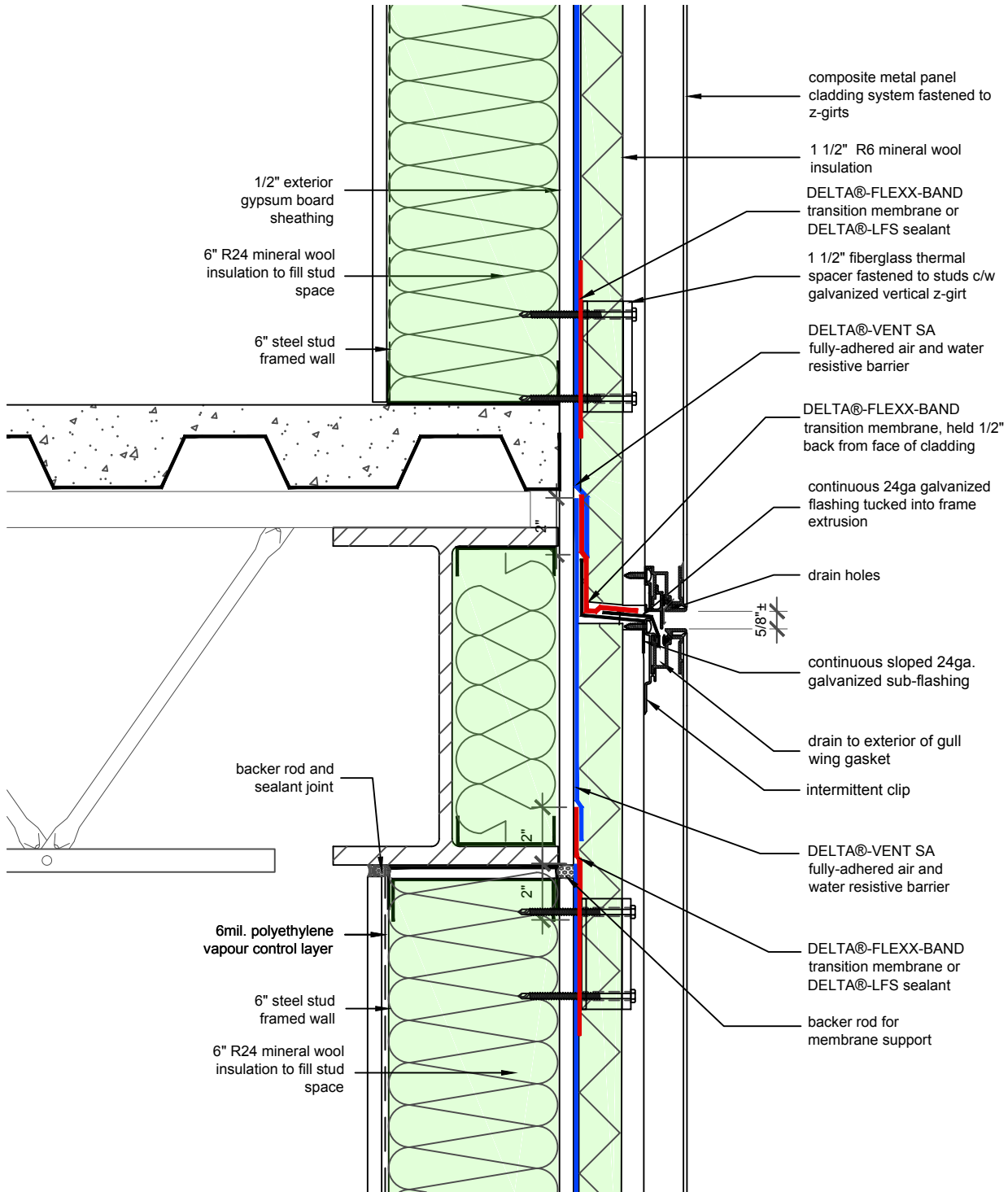
SUBSTANTIAL EFFORT HAS BEEN MADE TO ENSURE THAT THE INFORMATION IN THIS DETAIL DRAWING IS ACCURATE. DÖRKEN SYSTEMS INC. CANNOT ACCEPT RESPONSIBILITY FOR ANY ERRORS OR OVERSIGHTS IN THE USE OF THIS MATERIAL OR IN THE PREPARATION OF ARCHITECTURAL OR ENGINEERING PLANS. THE DESIGN PROFESSIONAL MUST RECOGNIZE THAT NO DESIGN DETAIL CAN SUBSTITUTE FOR EXPERIENCED ENGINEERING AND PROFESSIONAL JUDGEMENT.

TITLE:  
**WALL ASSEMBLY #1:  
 TYPICAL BASE OF WALL  
 AT FOUNDATION**



DRAWN BY: DÖRKEN SYSTEMS INC.  
 KRZYSZTOF APRIASZ C. Tech. CPHC®

4655 DELTA WAY BEAMSVILLE, ON.  
 L3J 0T6 CANADA



SUBSTANTIAL EFFORT HAS BEEN MADE TO ENSURE THAT THE INFORMATION IN THIS DETAIL DRAWING IS ACCURATE. DÖRKEN SYSTEMS INC. CANNOT ACCEPT RESPONSIBILITY FOR ANY ERRORS OR OVERSIGHTS IN THE USE OF THIS MATERIAL OR IN THE PREPARATION OF ARCHITECTURAL OR ENGINEERING PLANS. THE DESIGN PROFESSIONAL MUST RECOGNIZE THAT NO DESIGN DETAIL CAN SUBSTITUTE FOR EXPERIENCED ENGINEERING AND PROFESSIONAL JUDGEMENT.

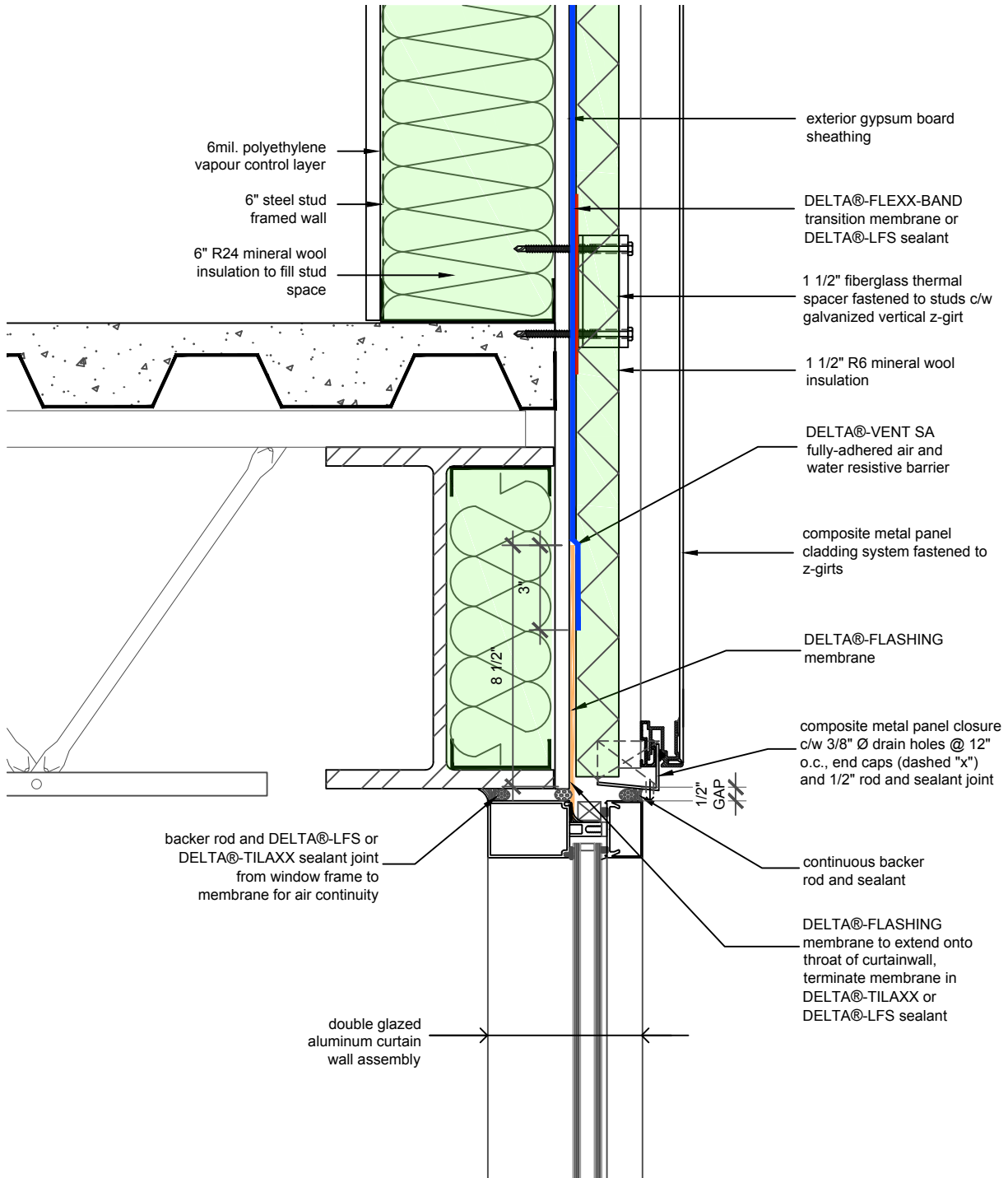
TITLE:

WALL ASSEMBLY #1:  
TYPICAL CLADDING  
ATTACHMENT AT FLOOR

DRAWN BY: DÖRKEN SYSTEMS INC.  
KRZYSZTOF APRIASZ C. Tech. CPHC®



4655 DELTA WAY BEAMSVILLE, ON.  
L3J 0T6 CANADA



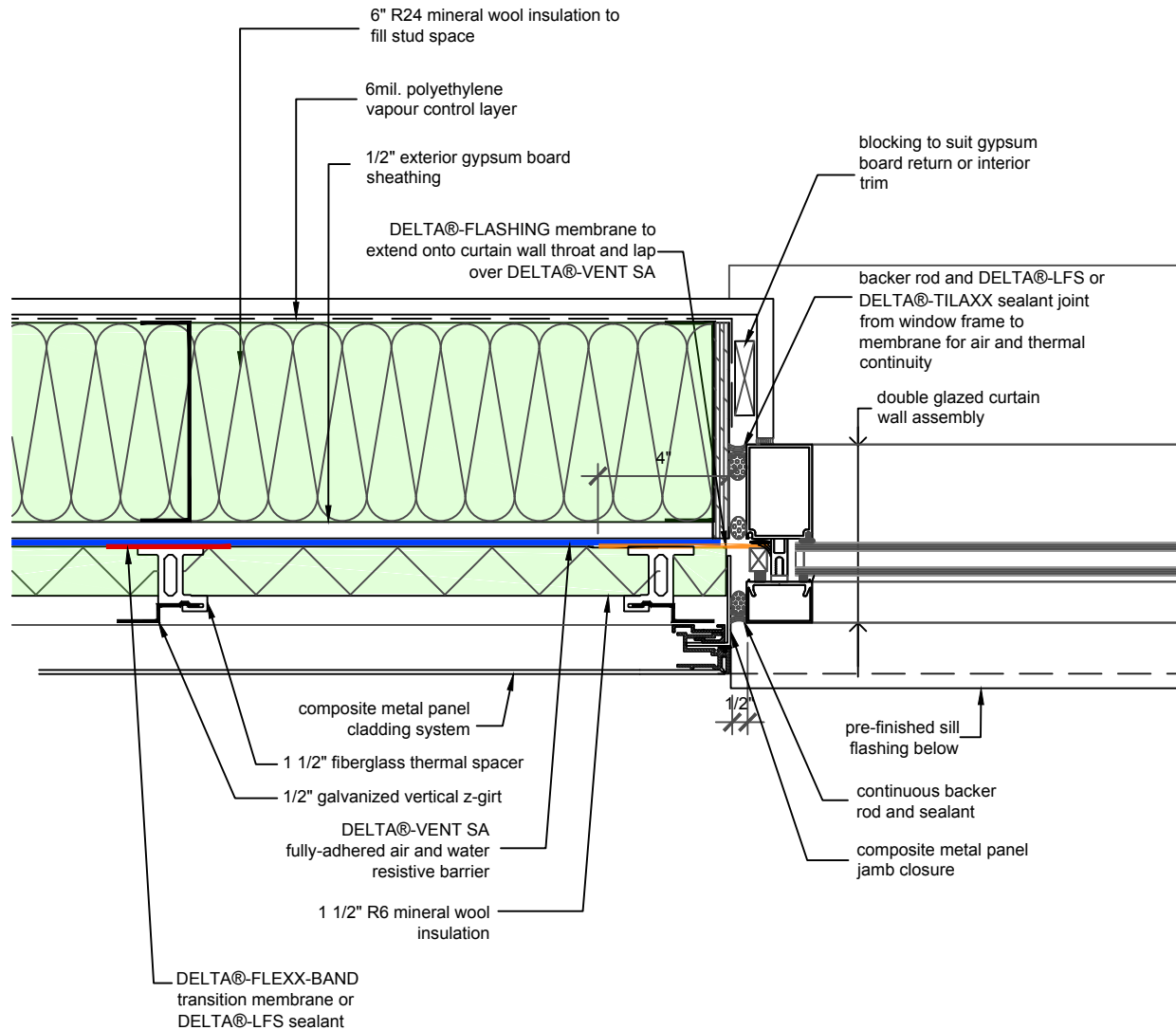
SUBSTANTIAL EFFORT HAS BEEN MADE TO ENSURE THAT THE INFORMATION IN THIS DETAIL DRAWING IS ACCURATE. DÖRKEN SYSTEMS INC. CANNOT ACCEPT RESPONSIBILITY FOR ANY ERRORS OR OVERSIGHTS IN THE USE OF THIS MATERIAL OR IN THE PREPARATION OF ARCHITECTURAL OR ENGINEERING PLANS. THE DESIGN PROFESSIONAL MUST RECOGNIZE THAT NO DESIGN DETAIL CAN SUBSTITUTE FOR EXPERIENCED ENGINEERING AND PROFESSIONAL JUDGEMENT.

TITLE:  
**WALL ASSEMBLY #1:  
 TYPICAL CURTAIN WALL  
 HEAD**



DRAWN BY: DÖRKEN SYSTEMS INC.  
 KRZYSZTOF APRIASZ C. Tech. CPHC®

4655 DELTA WAY BEAMSVILLE, ON.  
 L3J 0T6 CANADA



SUBSTANTIAL EFFORT HAS BEEN MADE TO ENSURE THAT THE INFORMATION IN THIS DETAIL DRAWING IS ACCURATE. DÖRKEN SYSTEMS INC. CANNOT ACCEPT RESPONSIBILITY FOR ANY ERRORS OR OVERSIGHTS IN THE USE OF THIS MATERIAL OR IN THE PREPARATION OF ARCHITECTURAL OR ENGINEERING PLANS. THE DESIGN PROFESSIONAL MUST RECOGNIZE THAT NO DESIGN DETAIL CAN SUBSTITUTE FOR EXPERIENCED ENGINEERING AND PROFESSIONAL JUDGEMENT.

TITLE:

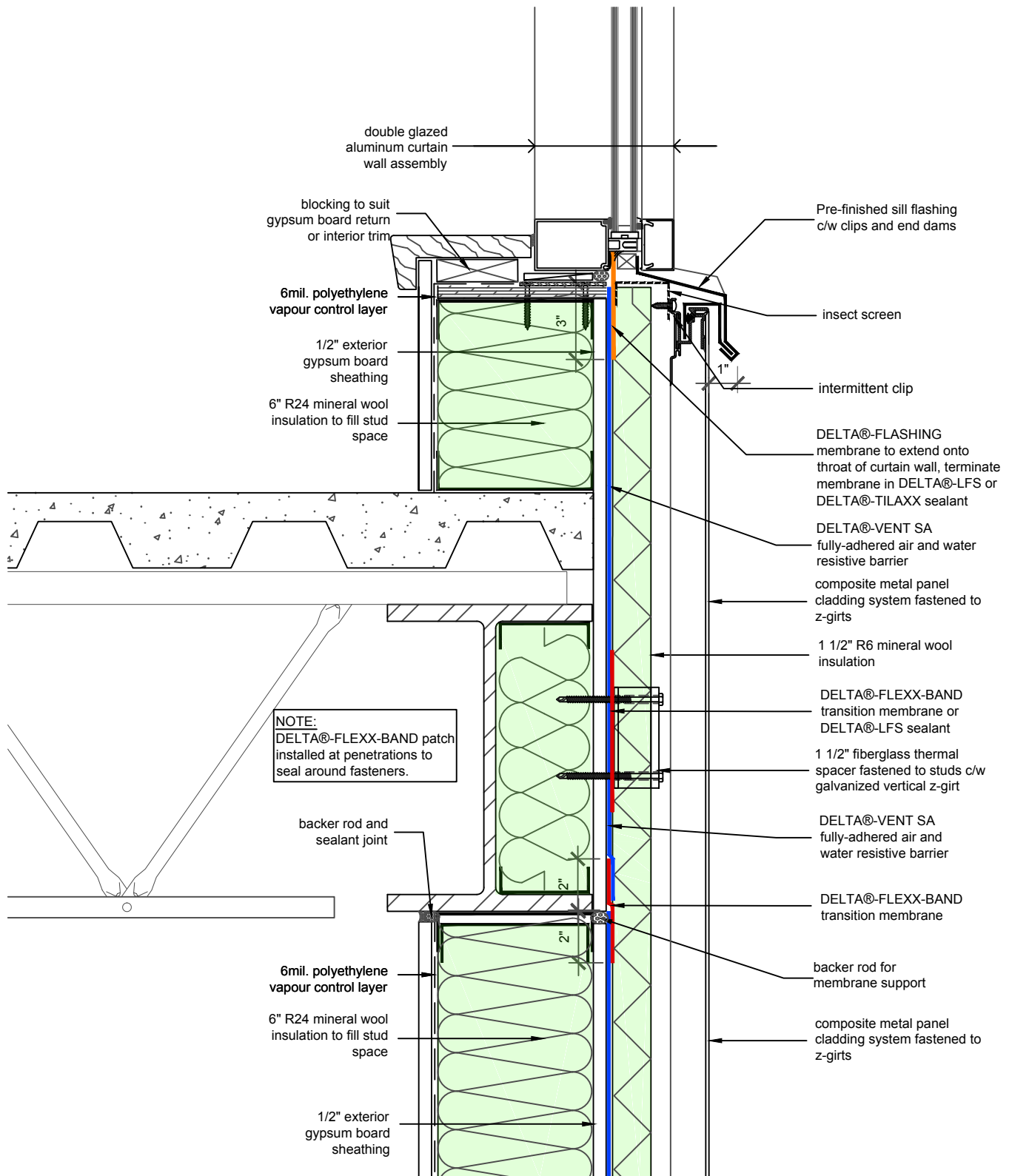
## WALL ASSEMBLY #1: TYPICAL CURTAIN WALL JAMB

DRAWN BY: DÖRKEN SYSTEMS INC.  
KRZYSZTOF APRIASZ C. Tech. CPHC®

 **DÖRKEN**

**DELTA®**

4655 DELTA WAY BEAMSVILLE, ON.  
L3J 0T6 CANADA



SUBSTANTIAL EFFORT HAS BEEN MADE TO ENSURE THAT THE INFORMATION IN THIS DETAIL DRAWING IS ACCURATE. DÖRKEN SYSTEMS INC. CANNOT ACCEPT RESPONSIBILITY FOR ANY ERRORS OR OVERSIGHTS IN THE USE OF THIS MATERIAL OR IN THE PREPARATION OF ARCHITECTURAL OR ENGINEERING PLANS. THE DESIGN PROFESSIONAL MUST RECOGNIZE THAT NO DESIGN DETAIL CAN SUBSTITUTE FOR EXPERIENCED ENGINEERING AND PROFESSIONAL JUDGEMENT.

TITLE:

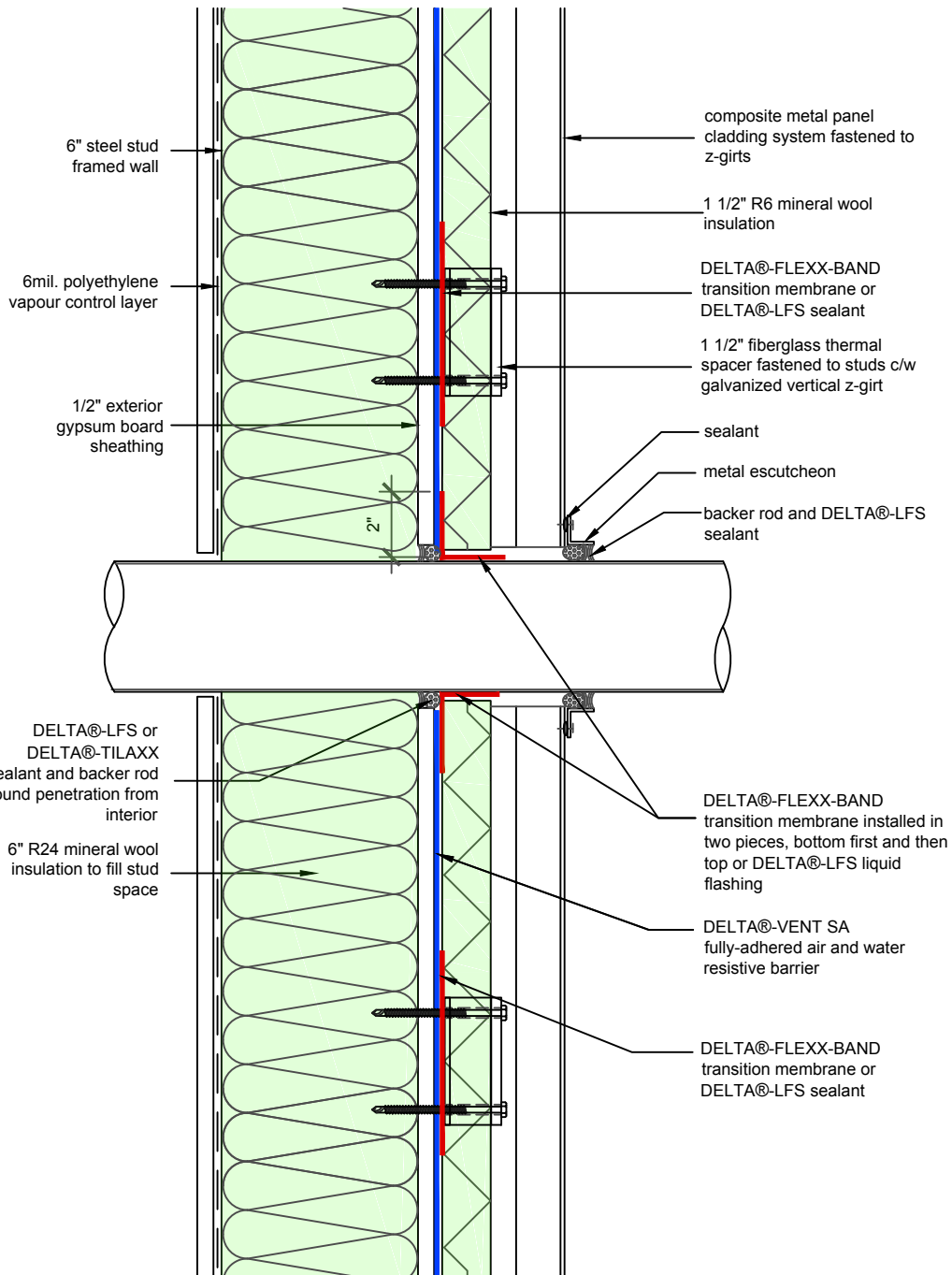
## WALL ASSEMBLY #1: TYPICAL CURTAIN WALL SILL

DRAWN BY: DÖRKEN SYSTEMS INC.  
KRZYSZTOF APRIASZ C. Tech. CPHC®

 DÖRKEN

**DELTA®**

4655 DELTA WAY BEAMSVILLE, ON.  
L3J 0T6 CANADA



SUBSTANTIAL EFFORT HAS BEEN MADE TO ENSURE THAT THE INFORMATION IN THIS DETAIL DRAWING IS ACCURATE. DÖRKEN SYSTEMS INC. CANNOT ACCEPT RESPONSIBILITY FOR ANY ERRORS OR OVERSIGHTS IN THE USE OF THIS MATERIAL OR IN THE PREPARATION OF ARCHITECTURAL OR ENGINEERING PLANS. THE DESIGN PROFESSIONAL MUST RECOGNIZE THAT NO DESIGN DETAIL CAN SUBSTITUTE FOR EXPERIENCED ENGINEERING AND PROFESSIONAL JUDGEMENT.

TITLE:

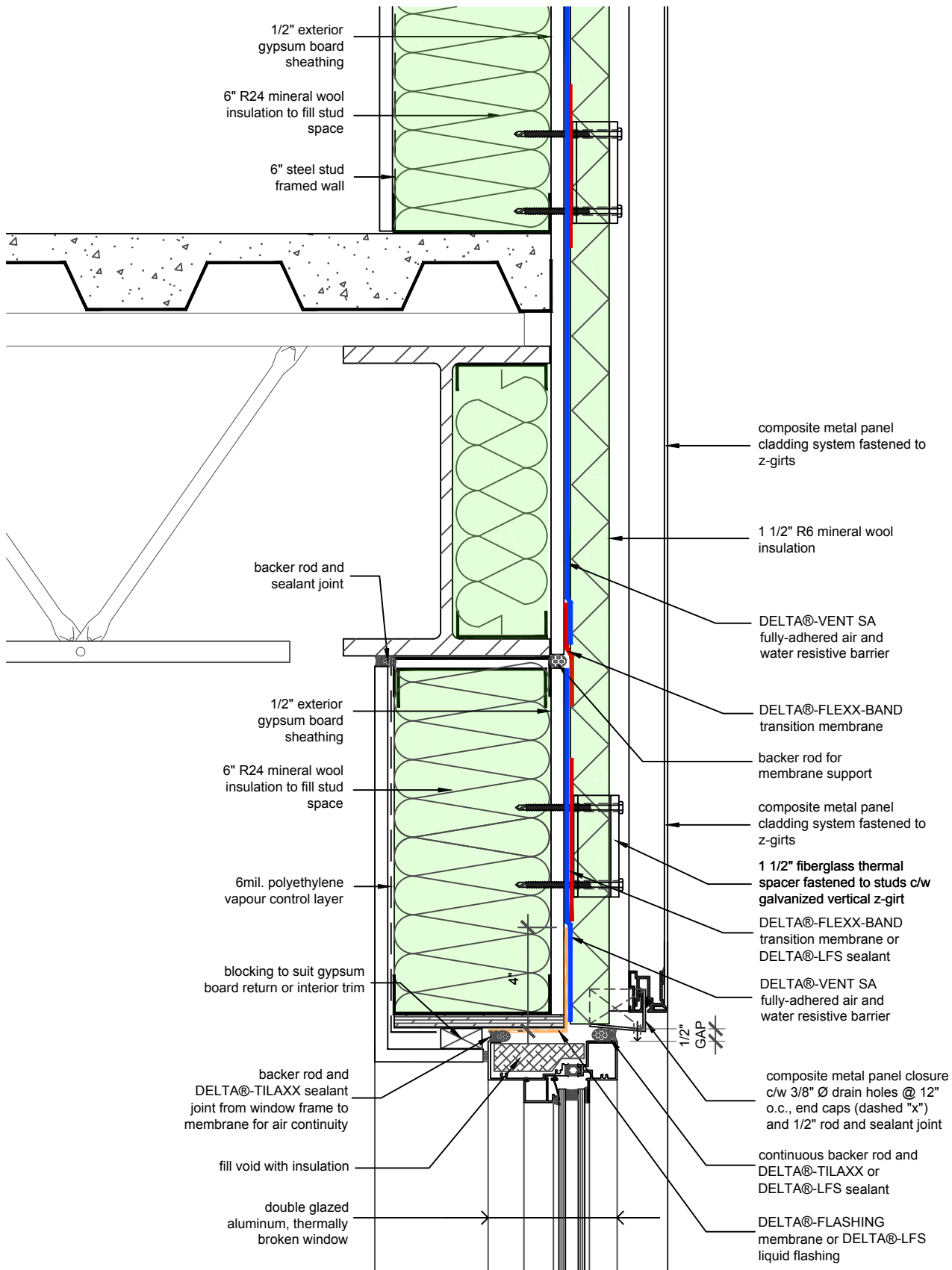
## WALL ASSEMBLY #1: TYPICAL PENETRATION

DRAWN BY: DÖRKEN SYSTEMS INC.  
KRZYSZTOF APRIASZ C. Tech. CPHC®

 **DÖRKEN**

**DELTA®**

4655 DELTA WAY BEAMSVILLE, ON.  
L3J 0T6 CANADA



SUBSTANTIAL EFFORT HAS BEEN MADE TO ENSURE THAT THE INFORMATION IN THIS DETAIL DRAWING IS ACCURATE. DÖRKEN SYSTEMS INC. CANNOT ACCEPT RESPONSIBILITY FOR ANY ERRORS OR OVERSIGHTS IN THE USE OF THIS MATERIAL OR IN THE PREPARATION OF ARCHITECTURAL OR ENGINEERING PLANS. THE DESIGN PROFESSIONAL MUST RECOGNIZE THAT NO DESIGN DETAIL CAN SUBSTITUTE FOR EXPERIENCED ENGINEERING AND PROFESSIONAL JUDGEMENT.

TITLE:

## WALL ASSEMBLY #1: TYPICAL PUNCHED WINDOW HEAD

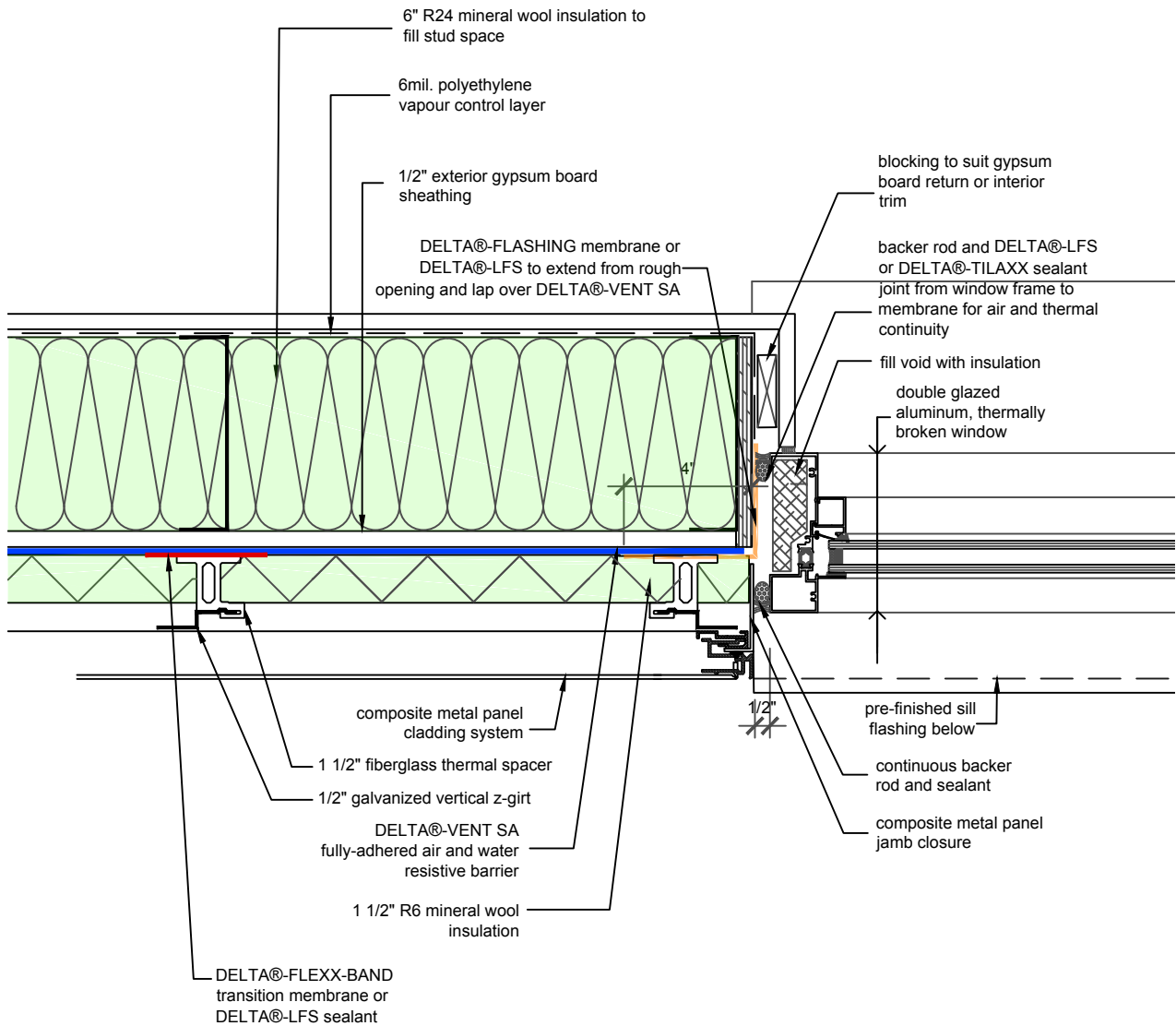
DRAWN BY: DÖRKEN SYSTEMS INC.  
KRZYSZTOF APRIASZ C. Tech. CPHC®

 **DÖRKEN**

**DELTA®**

4655 DELTA WAY BEAMSVILLE, ON.  
L3J 0T6 CANADA





SUBSTANTIAL EFFORT HAS BEEN MADE TO ENSURE THAT THE INFORMATION IN THIS DETAIL DRAWING IS ACCURATE. DÖRKEN SYSTEMS INC. CANNOT ACCEPT RESPONSIBILITY FOR ANY ERRORS OR OVERSIGHTS IN THE USE OF THIS MATERIAL OR IN THE PREPARATION OF ARCHITECTURAL OR ENGINEERING PLANS. THE DESIGN PROFESSIONAL MUST RECOGNIZE THAT NO DESIGN DETAIL CAN SUBSTITUTE FOR EXPERIENCED ENGINEERING AND PROFESSIONAL JUDGEMENT.

TITLE:

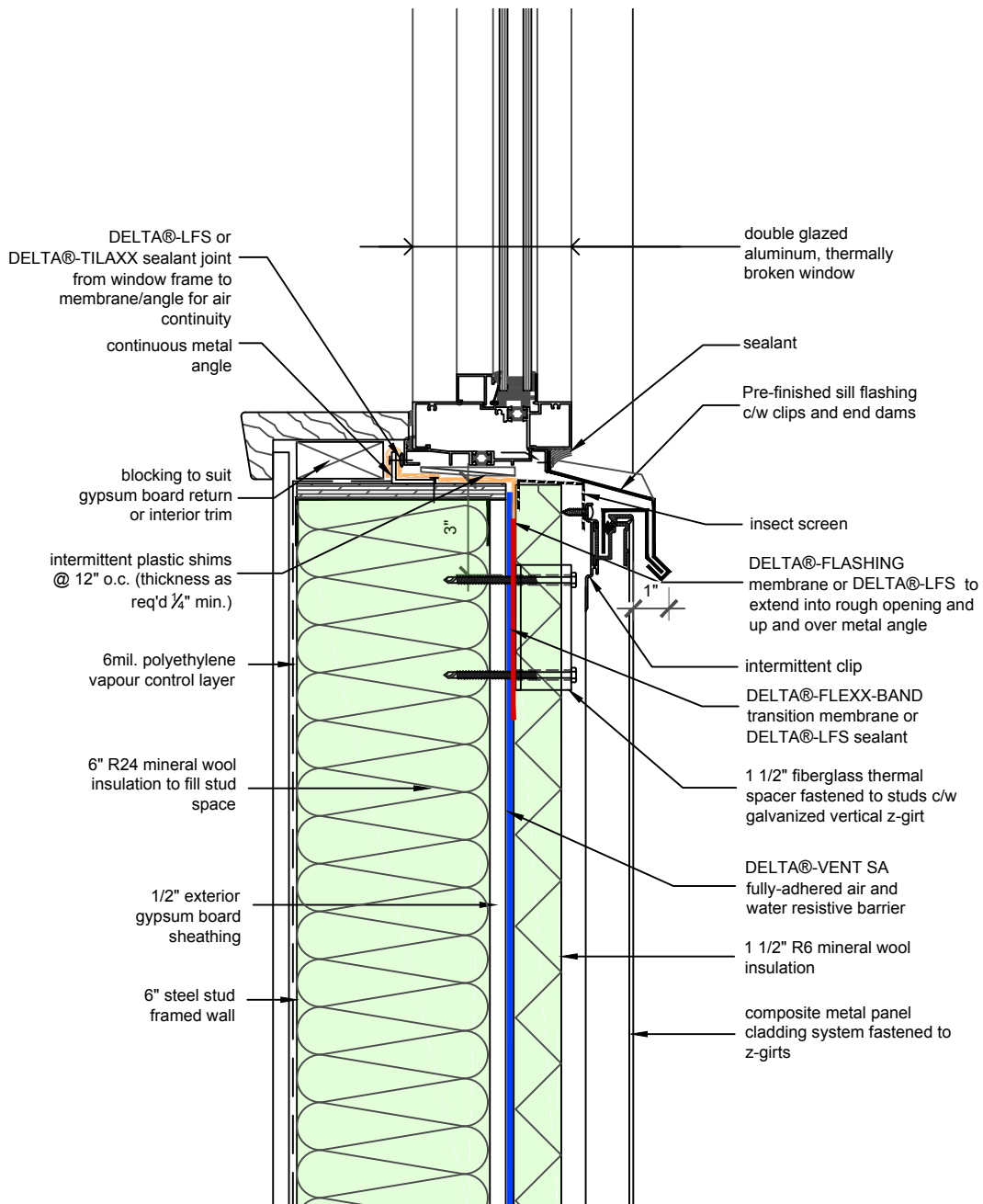
## WALL ASSEMBLY #1: TYPICAL PUNCHED WINDOW JAMB

DRAWN BY: DÖRKEN SYSTEMS INC.  
KRZYSZTOF APRIASZ C. Tech. CPHC®

 **DÖRKEN**

**DELTA®**

4655 DELTA WAY BEAMSVILLE, ON.  
L3J 0T6 CANADA



SUBSTANTIAL EFFORT HAS BEEN MADE TO ENSURE THAT THE INFORMATION IN THIS DETAIL DRAWING IS ACCURATE. DÖRKEN SYSTEMS INC. CANNOT ACCEPT RESPONSIBILITY FOR ANY ERRORS OR OVERSIGHTS IN THE USE OF THIS MATERIAL OR IN THE PREPARATION OF ARCHITECTURAL OR ENGINEERING PLANS. THE DESIGN PROFESSIONAL MUST RECOGNIZE THAT NO DESIGN DETAIL CAN SUBSTITUTE FOR EXPERIENCED ENGINEERING AND PROFESSIONAL JUDGEMENT.

TITLE:

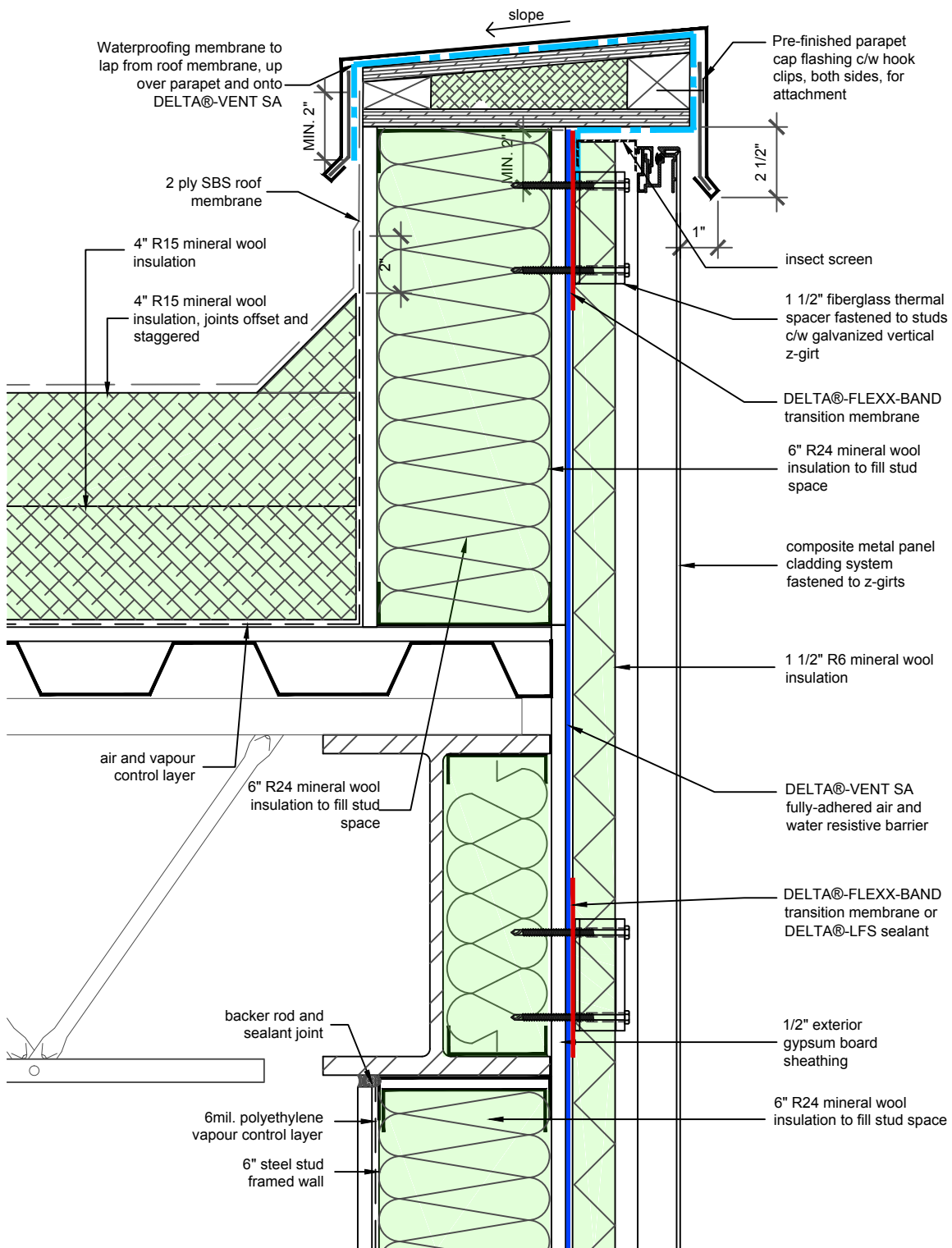
**WALL ASSEMBLY #1:  
TYPICAL PUNCHED  
WINDOW JAMB**

DRAWN BY: DÖRKEN SYSTEMS INC.  
KRZYSZTOF APRIASZ C. Tech. CPHC®



**DELTA®**

4655 DELTA WAY BEAMSVILLE, ON.  
L3J 0T6 CANADA



SUBSTANTIAL EFFORT HAS BEEN MADE TO ENSURE THAT THE INFORMATION IN THIS DETAIL DRAWING IS ACCURATE. DÖRKEN SYSTEMS INC. CANNOT ACCEPT RESPONSIBILITY FOR ANY ERRORS OR OVERSIGHTS IN THE USE OF THIS MATERIAL OR IN THE PREPARATION OF ARCHITECTURAL OR ENGINEERING PLANS. THE DESIGN PROFESSIONAL MUST RECOGNIZE THAT NO DESIGN DETAIL CAN SUBSTITUTE FOR EXPERIENCED ENGINEERING AND PROFESSIONAL JUDGEMENT.

TITLE:  
**WALL ASSEMBLY #1:  
 TYPICAL ROOF TO WALL  
 SECTION**



DRAWN BY: DÖRKEN SYSTEMS INC.  
 KRZYSZTOF APRIASZ C. Tech. CPHC®

4655 DELTA WAY BEAMSVILLE, ON.  
 L3J 0T6 CANADA