

Wall Assembly 3 - Steel Frame Less Than 2 Inches of Exterior Insulation - Heavy Cladding

P R E M I U M Q U A L I T Y

DELTA® is a registered trademark of Ewald Dörken AG, Herdecke, Germany

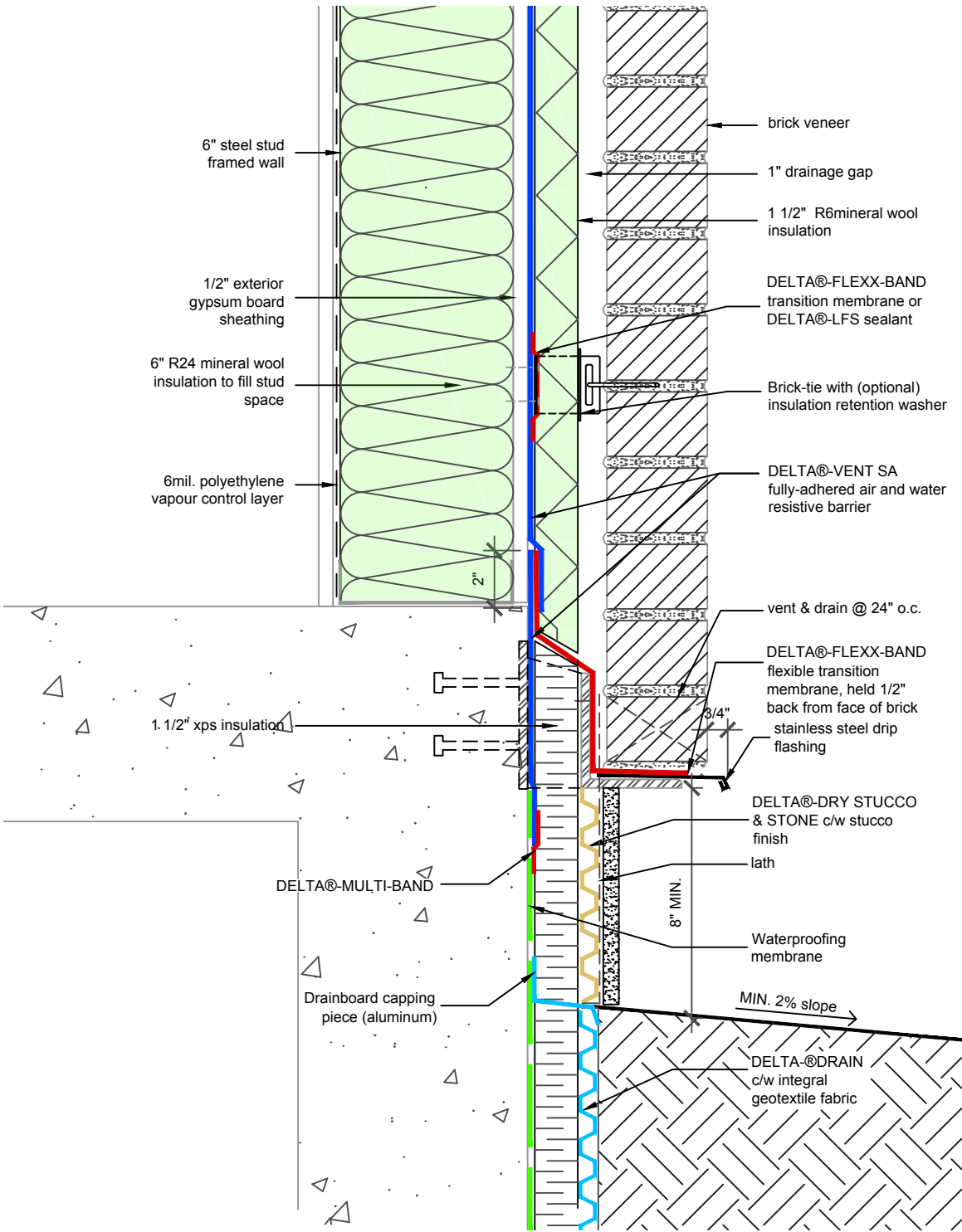
Dörken Systems Inc. 4655 Delta Way Beamsville, Ontario L3J 0T6

1-888-4 DELTA 4, (905) 563-3255 Fax: (905) 563-5582

info@dorken.com, www.dorken.com

A DÖRKENGROUP company

DS 04/18/22 3



SUBSTANTIAL EFFORT HAS BEEN MADE TO ENSURE THAT THE INFORMATION IN THIS DETAIL DRAWING IS ACCURATE. DÖRKEN SYSTEMS INC. CANNOT ACCEPT RESPONSIBILITY FOR ANY ERRORS OR OVERSIGHTS IN THE USE OF THIS MATERIAL OR IN THE PREPARATION OF ARCHITECTURAL OR ENGINEERING PLANS. THE DESIGN PROFESSIONAL MUST RECOGNIZE THAT NO DESIGN DETAIL CAN SUBSTITUTE FOR EXPERIENCED ENGINEERING AND PROFESSIONAL JUDGEMENT.

TITLE:

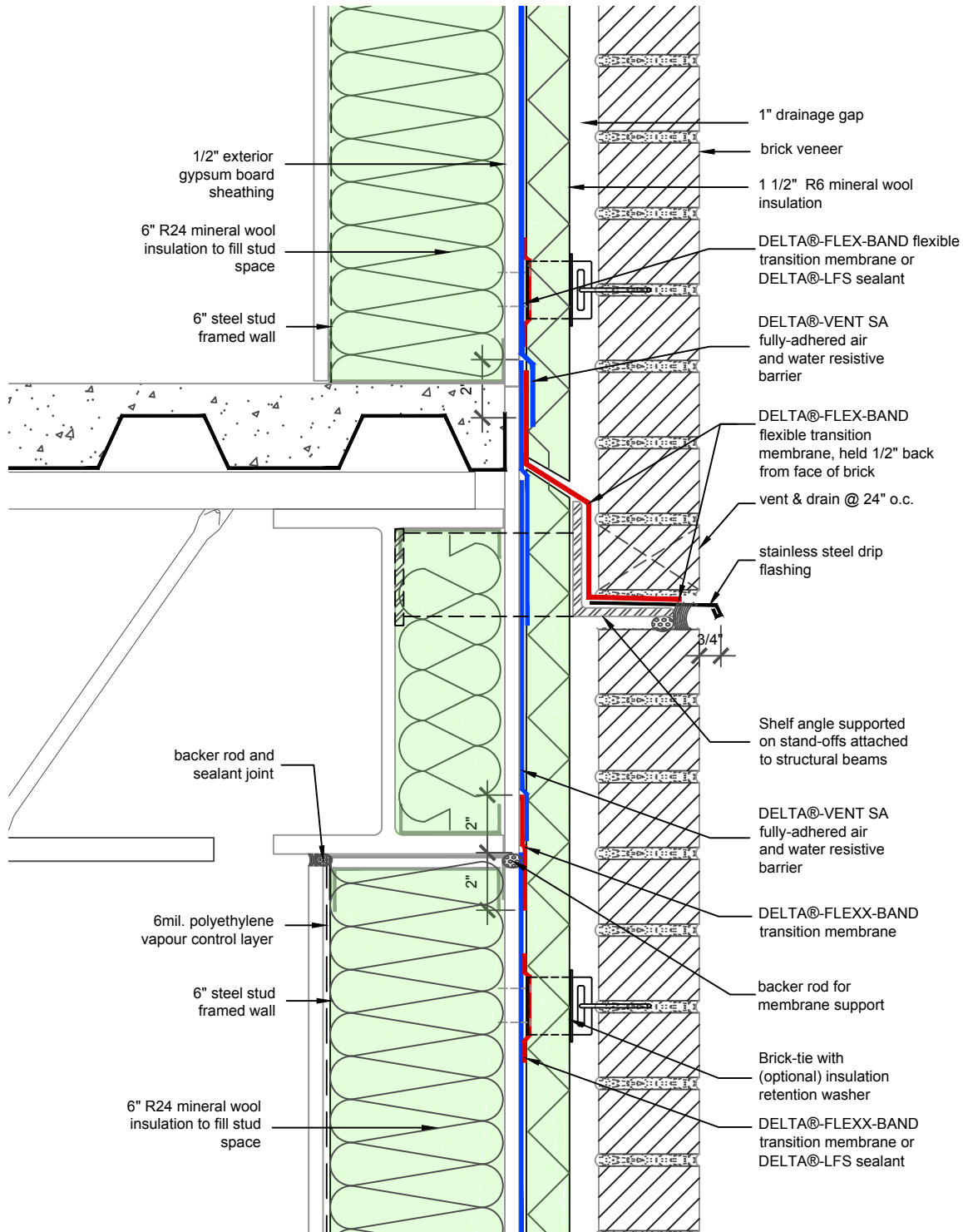
WALL ASSEMBLY #3:
TYPICAL CLADDING
ATTACHMENT AT FLOOR

DRAWN BY: DÖRKEN SYSTEMS INC.
KRZYSZTOF APRIASZ C. Tech. CPHC®

 DÖRKEN

DELTA®

4655 DELTA WAY BEAMSVILLE, ON.
L3J 0T6 CANADA



SUBSTANTIAL EFFORT HAS BEEN MADE TO ENSURE THAT THE INFORMATION IN THIS DETAIL DRAWING IS ACCURATE. DÖRKEN SYSTEMS INC. CANNOT ACCEPT RESPONSIBILITY FOR ANY ERRORS OR OVERSIGHTS IN THE USE OF THIS MATERIAL OR IN THE PREPARATION OF ARCHITECTURAL OR ENGINEERING PLANS. THE DESIGN PROFESSIONAL MUST RECOGNIZE THAT NO DESIGN DETAIL CAN SUBSTITUTE FOR EXPERIENCED ENGINEERING AND PROFESSIONAL JUDGEMENT.

TITLE:

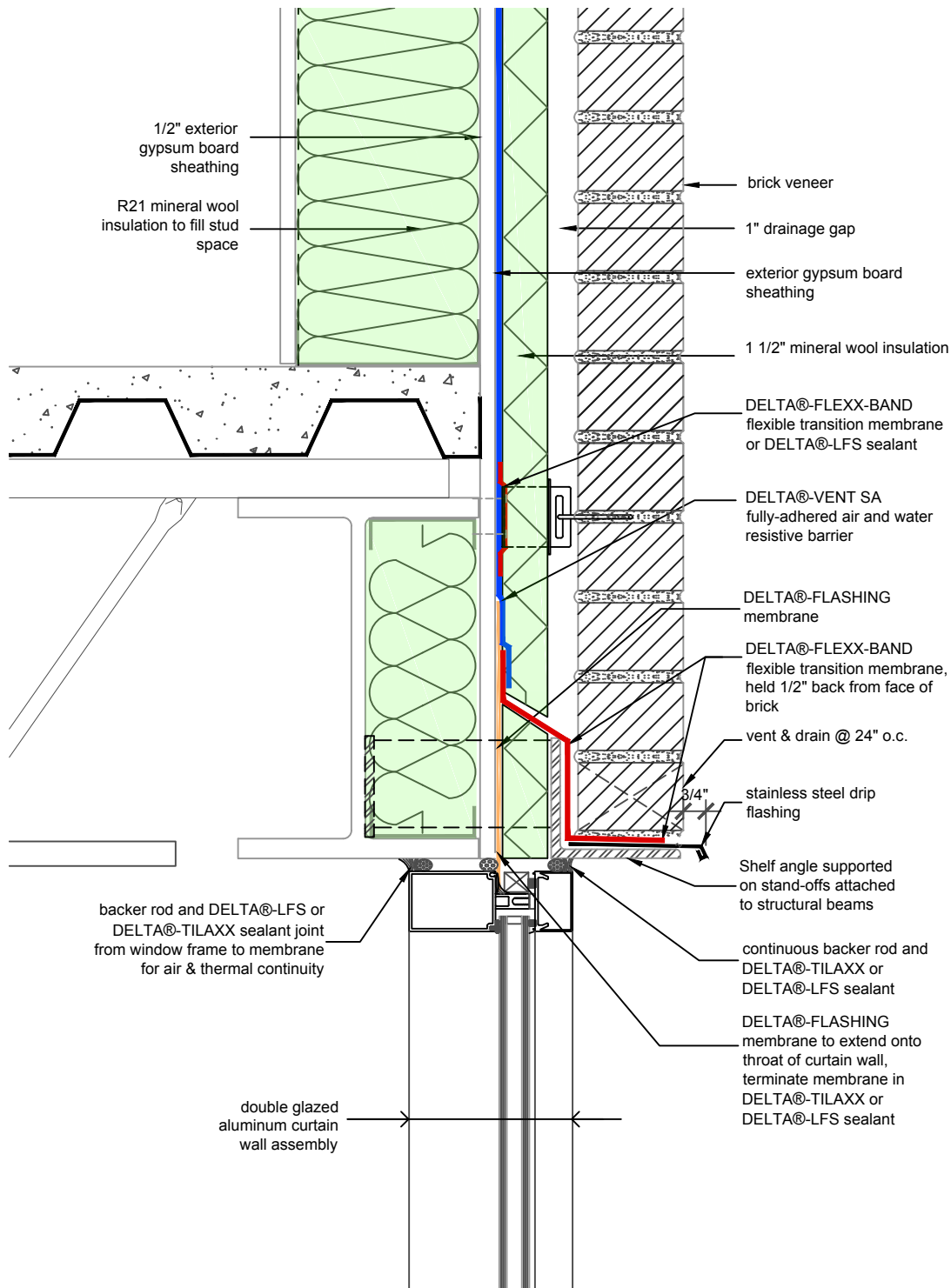
WALL ASSEMBLY #3: TYPICAL BRICK SHELF AT STUD WALL

DRAWN BY: DÖRKEN SYSTEMS INC.
KRZYSZTOF APRIASZ C. Tech. CPHC®

DÖRKEN

DELTA®

6455 DELTA WAY BEAMSVILLE, ON.
L3J 0T6 CANADA



SUBSTANTIAL EFFORT HAS BEEN MADE TO ENSURE THAT THE INFORMATION IN THIS DETAIL DRAWING IS ACCURATE. DÖRKEN SYSTEMS INC. CANNOT ACCEPT RESPONSIBILITY FOR ANY ERRORS OR OVERSIGHTS IN THE USE OF THIS MATERIAL OR IN THE PREPARATION OF ARCHITECTURAL OR ENGINEERING PLANS. THE DESIGN PROFESSIONAL MUST RECOGNIZE THAT NO DESIGN DETAIL CAN SUBSTITUTE FOR EXPERIENCED ENGINEERING AND PROFESSIONAL JUDGEMENT.

TITLE:

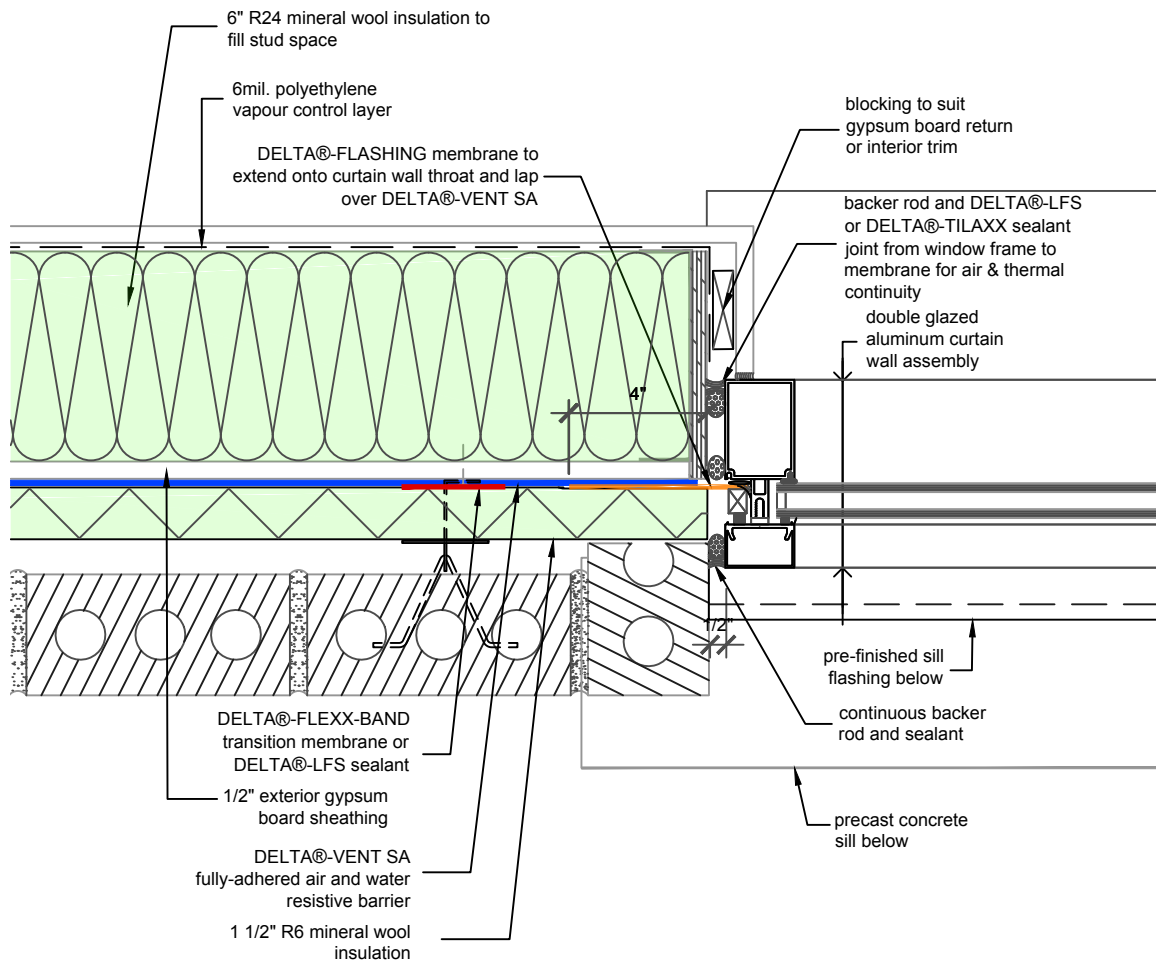
WALL ASSEMBLY #3: TYPICAL CURTAIN WALL HEAD

DRAWN BY: DÖRKEN SYSTEMS INC.
KRZYSZTOF APRIASZ C. Tech. CPHC®

 **DÖRKEN**

DELTA®

4655 DELTA WAY BEAMSVILLE, ON.
L3J 0T6 CANADA



SUBSTANTIAL EFFORT HAS BEEN MADE TO ENSURE THAT THE INFORMATION IN THIS DETAIL DRAWING IS ACCURATE. DÖRKEN SYSTEMS INC. CANNOT ACCEPT RESPONSIBILITY FOR ANY ERRORS OR OVERSIGHTS IN THE USE OF THIS MATERIAL OR IN THE PREPARATION OF ARCHITECTURAL OR ENGINEERING PLANS. THE DESIGN PROFESSIONAL MUST RECOGNIZE THAT NO DESIGN DETAIL CAN SUBSTITUTE FOR EXPERIENCED ENGINEERING AND PROFESSIONAL JUDGEMENT.

TITLE:

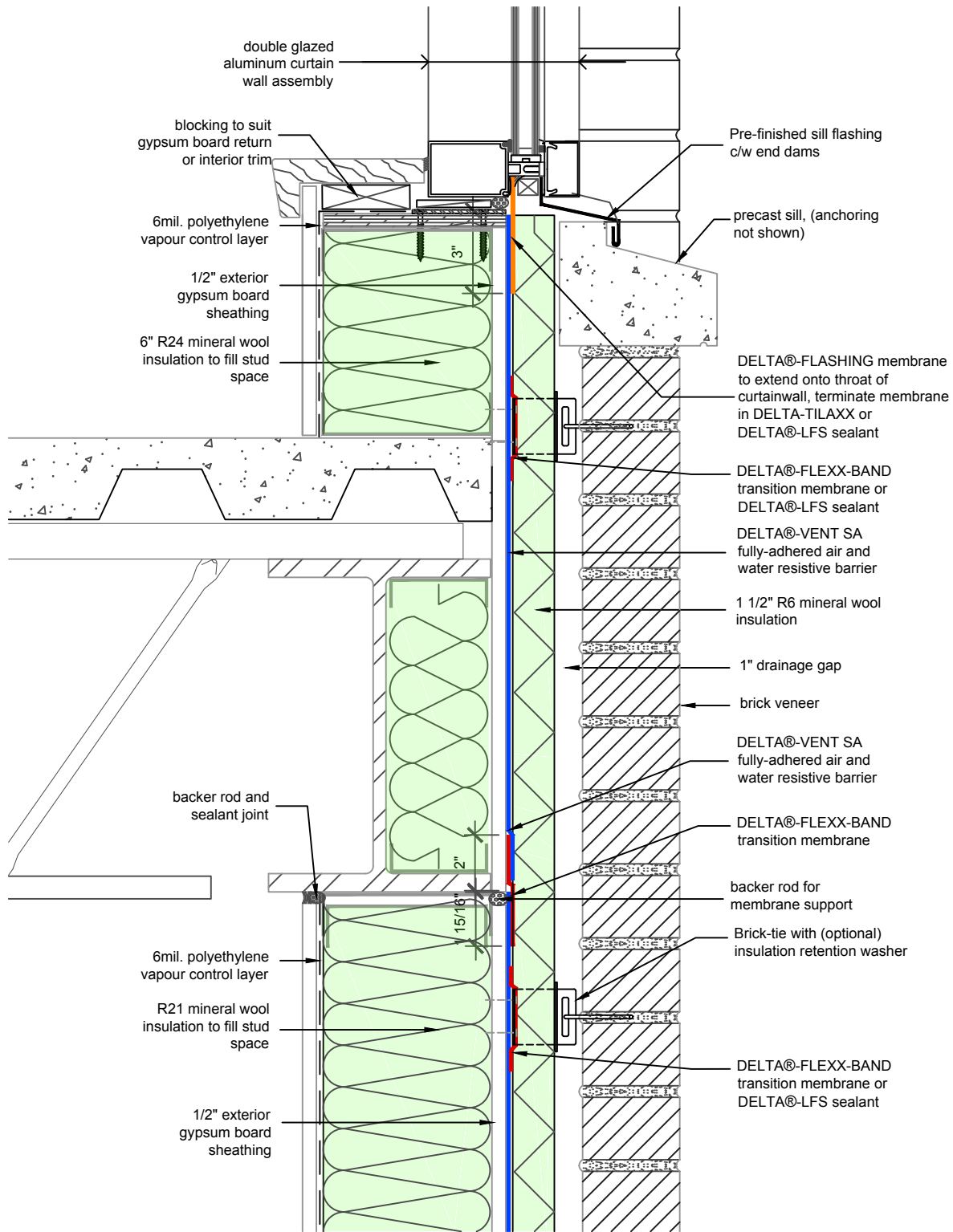
WALL ASSEMBLY #3: TYPICAL CURTAIN WALL JAMB

DRAWN BY: DÖRKEN SYSTEMS INC.
KRZYSZTOF APRIASZ C. Tech. CPHC®

 **DÖRKEN**

DELTA®

4655 DELTA WAY BEAMSVILLE, ON.
L3J 0T6 CANADA



SUBSTANTIAL EFFORT HAS BEEN MADE TO ENSURE THAT THE INFORMATION IN THIS DETAIL DRAWING IS ACCURATE. DÖRKEN SYSTEMS INC. CANNOT ACCEPT RESPONSIBILITY FOR ANY ERRORS OR OVERSIGHTS IN THE USE OF THIS MATERIAL OR IN THE PREPARATION OF ARCHITECTURAL OR ENGINEERING PLANS. THE DESIGN PROFESSIONAL MUST RECOGNIZE THAT NO DESIGN DETAIL CAN SUBSTITUTE FOR EXPERIENCED ENGINEERING AND PROFESSIONAL JUDGEMENT.

TITLE:

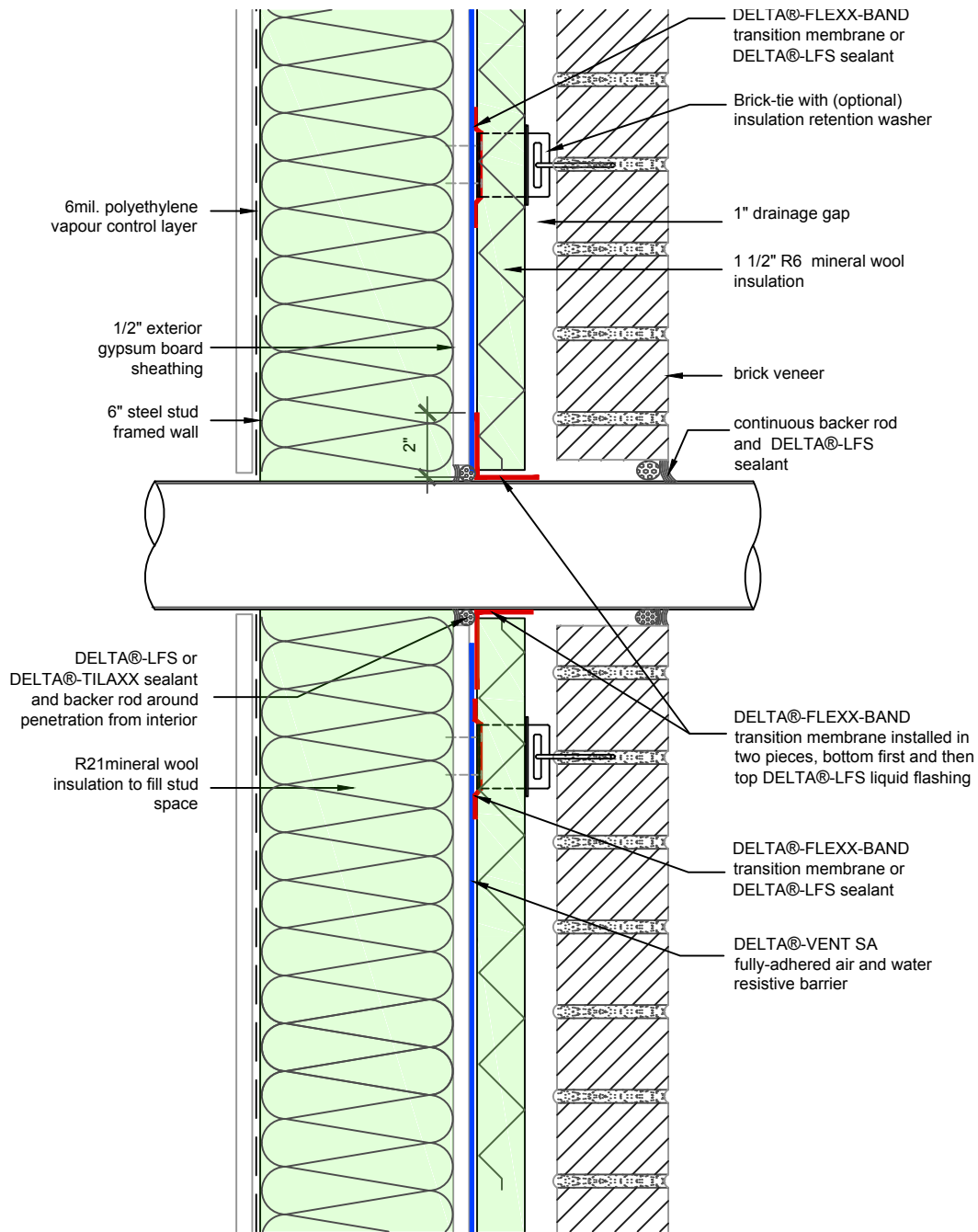
WALL ASSEMBLY #3:
TYPICAL CURTAIN WALL
SILL

DRAWN BY: DÖRKEN SYSTEMS INC.
KRZYSZTOF APRIASZ C. Tech. CPHC®

 DÖRKEN

DELTA®

4655 DELTA WAY BEAMSVILLE, ON.
L3J 0T6 CANADA



SUBSTANTIAL EFFORT HAS BEEN MADE TO ENSURE THAT THE INFORMATION IN THIS DETAIL DRAWING IS ACCURATE. DÖRKEN SYSTEMS INC. CANNOT ACCEPT RESPONSIBILITY FOR ANY ERRORS OR OVERSIGHTS IN THE USE OF THIS MATERIAL OR IN THE PREPARATION OF ARCHITECTURAL OR ENGINEERING PLANS. THE DESIGN PROFESSIONAL MUST RECOGNIZE THAT NO DESIGN DETAIL CAN SUBSTITUTE FOR EXPERIENCED ENGINEERING AND PROFESSIONAL JUDGEMENT.

TITLE:

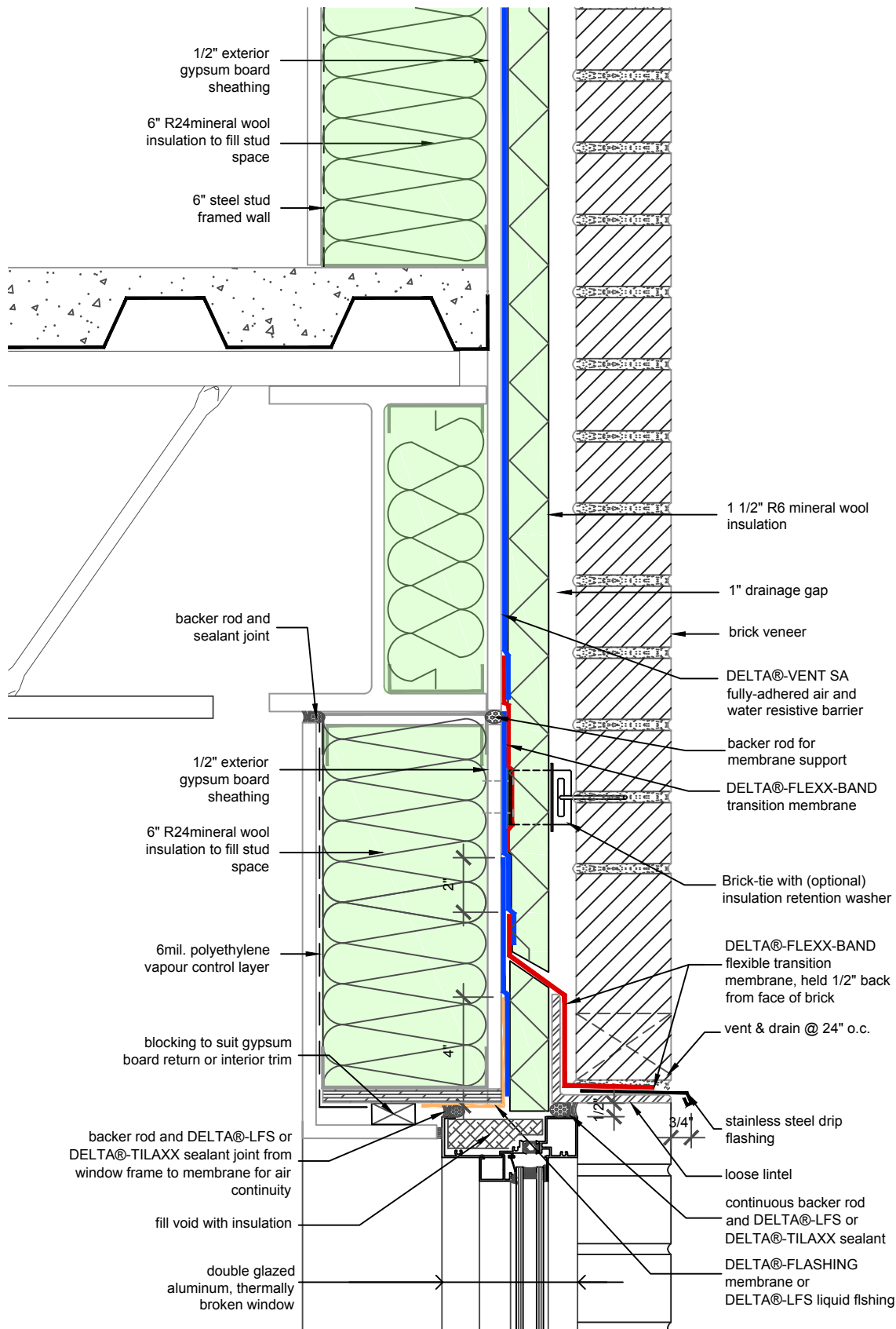
WALL ASSEMBLY #3: TYPICAL CURTAIN WALL SILL

DRAWN BY: DÖRKEN SYSTEMS INC.
KRZYSZTOF APRIASZ C. Tech. CPHC®

 **DÖRKEN**

DELTA®

4655 DELTA WAY BEAMSVILLE, ON.
L3J 0T6 CANADA



SUBSTANTIAL EFFORT HAS BEEN MADE TO ENSURE THAT THE INFORMATION IN THIS DETAIL DRAWING IS ACCURATE. DÖRKEN SYSTEMS INC. CANNOT ACCEPT RESPONSIBILITY FOR ANY ERRORS OR OVERSIGHTS IN THE USE OF THIS MATERIAL OR IN THE PREPARATION OF ARCHITECTURAL OR ENGINEERING PLANS. THE DESIGN PROFESSIONAL MUST RECOGNIZE THAT NO DESIGN DETAIL CAN SUBSTITUTE FOR EXPERIENCED ENGINEERING AND PROFESSIONAL JUDGEMENT.

TITLE:

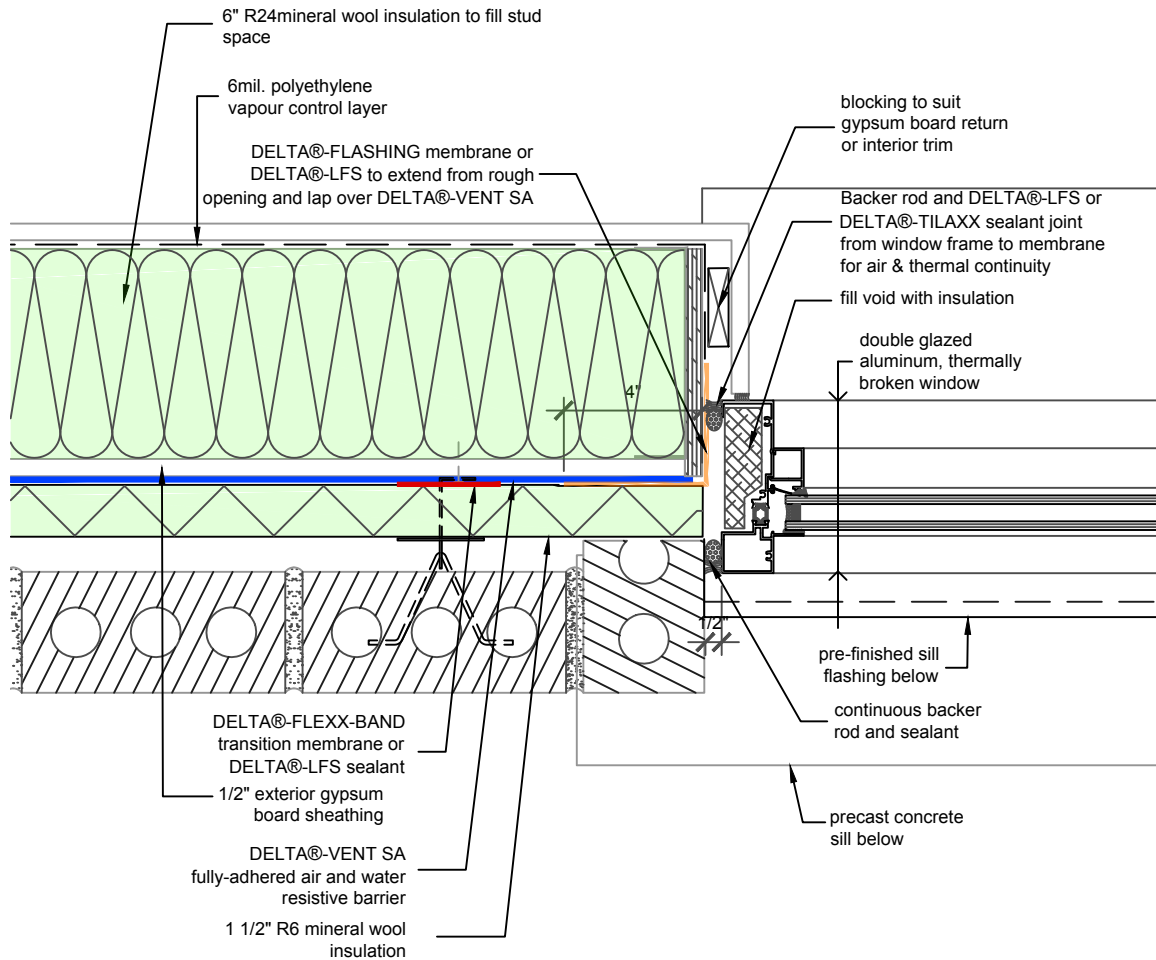
WALL ASSEMBLY #3: TYPICAL PUNCHED WINDOW SILL

DRAWN BY: DÖRKEN SYSTEMS INC.
 KRZYSZTOF APRIASZ C. Tech. CPHC®

DÖRKEN

DELTA®

4655 DELTA WAY BEAMSVILLE, ON.
 L3J 0T6 CANADA



SUBSTANTIAL EFFORT HAS BEEN MADE TO ENSURE THAT THE INFORMATION IN THIS DETAIL DRAWING IS ACCURATE. DÖRKEN SYSTEMS INC. CANNOT ACCEPT RESPONSIBILITY FOR ANY ERRORS OR OVERSIGHTS IN THE USE OF THIS MATERIAL OR IN THE PREPARATION OF ARCHITECTURAL OR ENGINEERING PLANS. THE DESIGN PROFESSIONAL MUST RECOGNIZE THAT NO DESIGN DETAIL CAN SUBSTITUTE FOR EXPERIENCED ENGINEERING AND PROFESSIONAL JUDGEMENT.

TITLE:

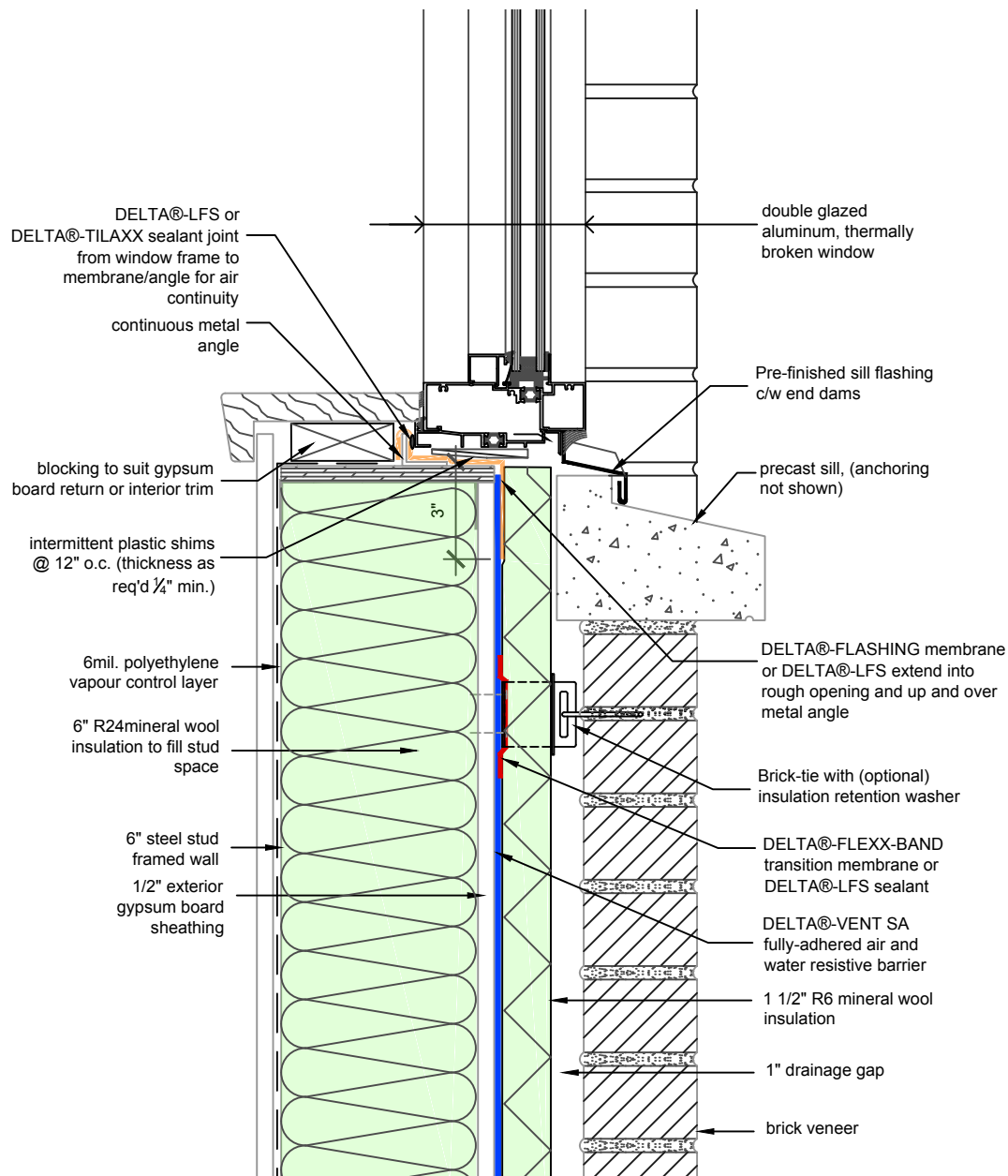
WALL ASSEMBLY #3:
TYPICAL PUNCHED
WINDOW JAMB

DRAWN BY: DÖRKEN SYSTEMS INC.
KRZYSZTOF APRIASZ C. Tech. CPHC®

 DÖRKEN

DELTA®

4655 DELTA WAY BEAMSVILLE, ON.
L3J 0T6 CANADA



SUBSTANTIAL EFFORT HAS BEEN MADE TO ENSURE THAT THE INFORMATION IN THIS DETAIL DRAWING IS ACCURATE. DÖRKEN SYSTEMS INC. CANNOT ACCEPT RESPONSIBILITY FOR ANY ERRORS OR OVERSIGHTS IN THE USE OF THIS MATERIAL OR IN THE PREPARATION OF ARCHITECTURAL OR ENGINEERING PLANS. THE DESIGN PROFESSIONAL MUST RECOGNIZE THAT NO DESIGN DETAIL CAN SUBSTITUTE FOR EXPERIENCED ENGINEERING AND PROFESSIONAL JUDGEMENT.

TITLE:

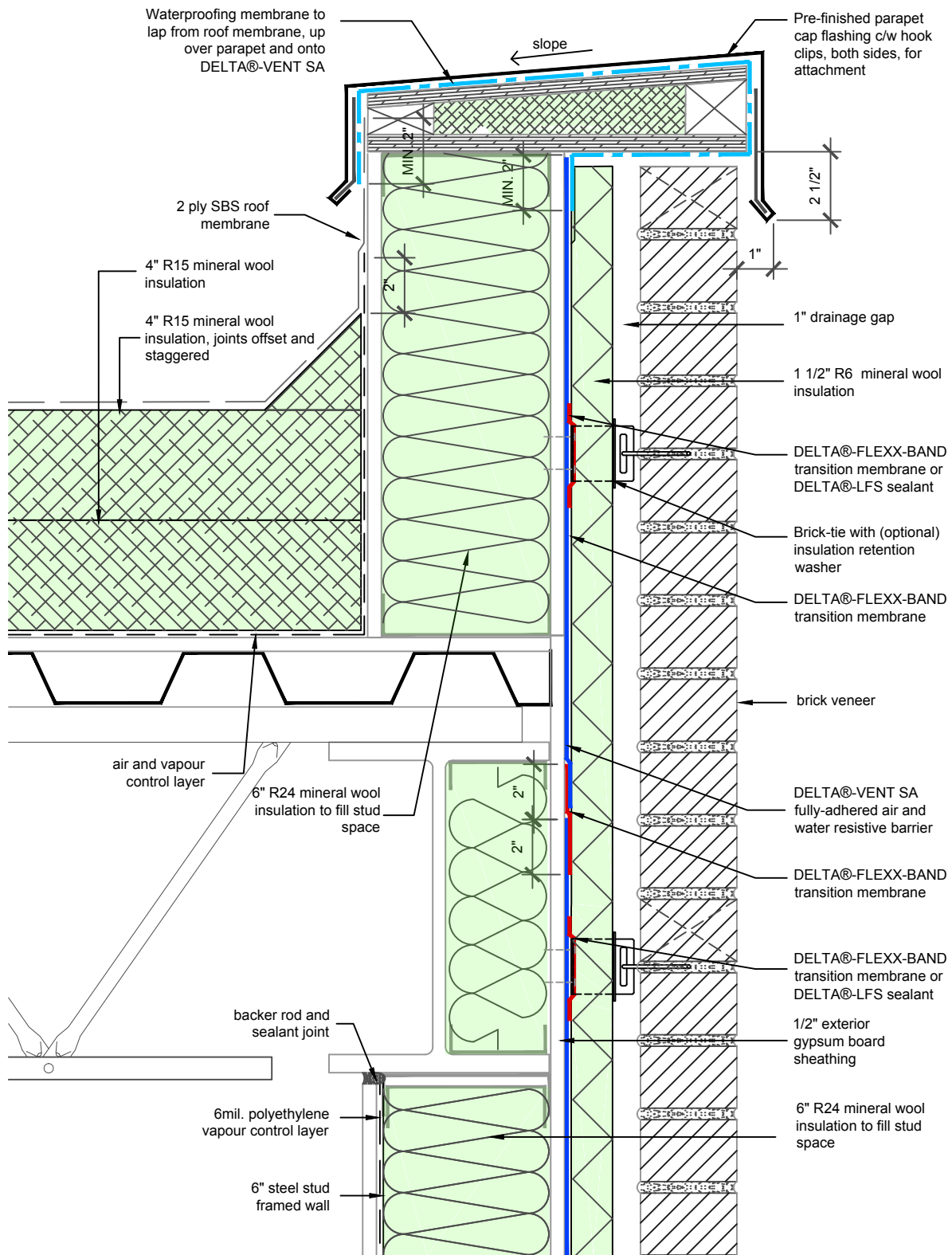
WALL ASSEMBLY #3:
TYPICAL PUNCHED
WINDOW SILL

DRAWN BY: DÖRKEN SYSTEMS INC.
KRZYSZTOF APRIASZ C. Tech. CPHC®

 DÖRKEN

DELTA®

4655 DELTA WAY BEAMSVILLE, ON.
L3J 0T6 CANADA



SUBSTANTIAL EFFORT HAS BEEN MADE TO ENSURE THAT THE INFORMATION IN THIS DETAIL DRAWING IS ACCURATE. DÖRKEN SYSTEMS INC. CANNOT ACCEPT RESPONSIBILITY FOR ANY ERRORS OR OVERSIGHTS IN THE USE OF THIS MATERIAL OR IN THE PREPARATION OF ARCHITECTURAL OR ENGINEERING PLANS. THE DESIGN PROFESSIONAL MUST RECOGNIZE THAT NO DESIGN DETAIL CAN SUBSTITUTE FOR EXPERIENCED ENGINEERING AND PROFESSIONAL JUDGEMENT.

TITLE:

WALL ASSEMBLY #3: TYPICAL ROOF TO WALL SECTION

DRAWN BY: DÖRKEN SYSTEMS INC.
KRZYSZTOF APRIASZ C. Tech. CPHC®

DÖRKEN

DELTA®

4655 DELTA WAY BEAMSVILLE, ON.
L3J 0T6 CANADA