

## Wall Assembly 4 - Concrete Frame Less Than 2 Inches of Exterior Insulation - Light Cladding

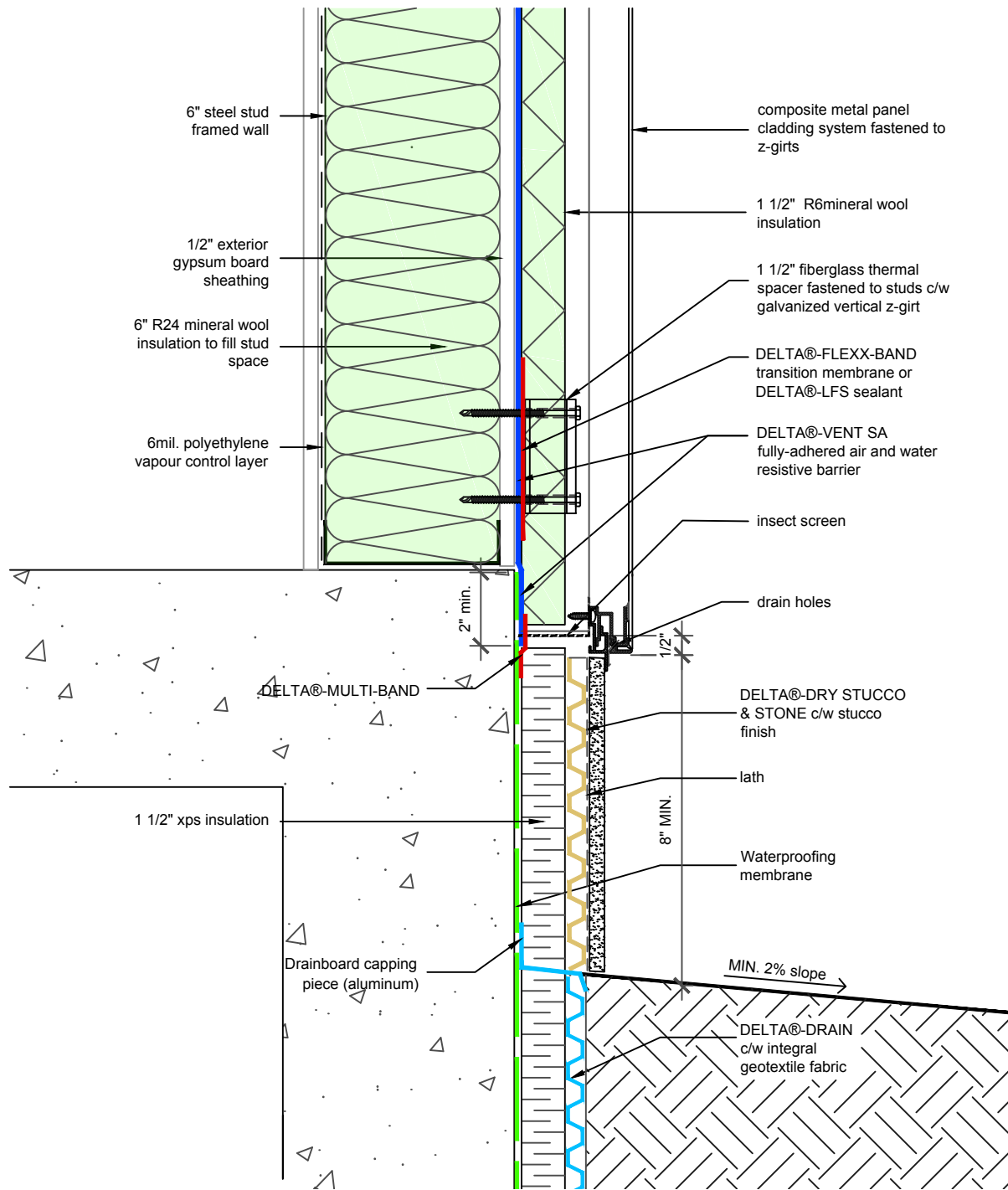
P R E M I U M Q U A L I T Y

DELTA® is a registered trademark of Ewald Dörken AG, Herdecke, Germany

DS 04/18/22 3

Dörken Systems Inc. 4655 Delta Way Beamsville, Ontario L3J 0T6  
1-888-4 DELTA 4, (905) 563-3255 Fax: (905) 563-5582  
info@dorken.com, www.dorken.com

A **DÖRKEN**GROUP company



SUBSTANTIAL EFFORT HAS BEEN MADE TO ENSURE THAT THE INFORMATION IN THIS DETAIL DRAWING IS ACCURATE. DÖRKEN SYSTEMS INC. CANNOT ACCEPT RESPONSIBILITY FOR ANY ERRORS OR OVERSIGHTS IN THE USE OF THIS MATERIAL OR IN THE PREPARATION OF ARCHITECTURAL OR ENGINEERING PLANS. THE DESIGN PROFESSIONAL MUST RECOGNIZE THAT NO DESIGN DETAIL CAN SUBSTITUTE FOR EXPERIENCED ENGINEERING AND PROFESSIONAL JUDGEMENT.

TITLE:

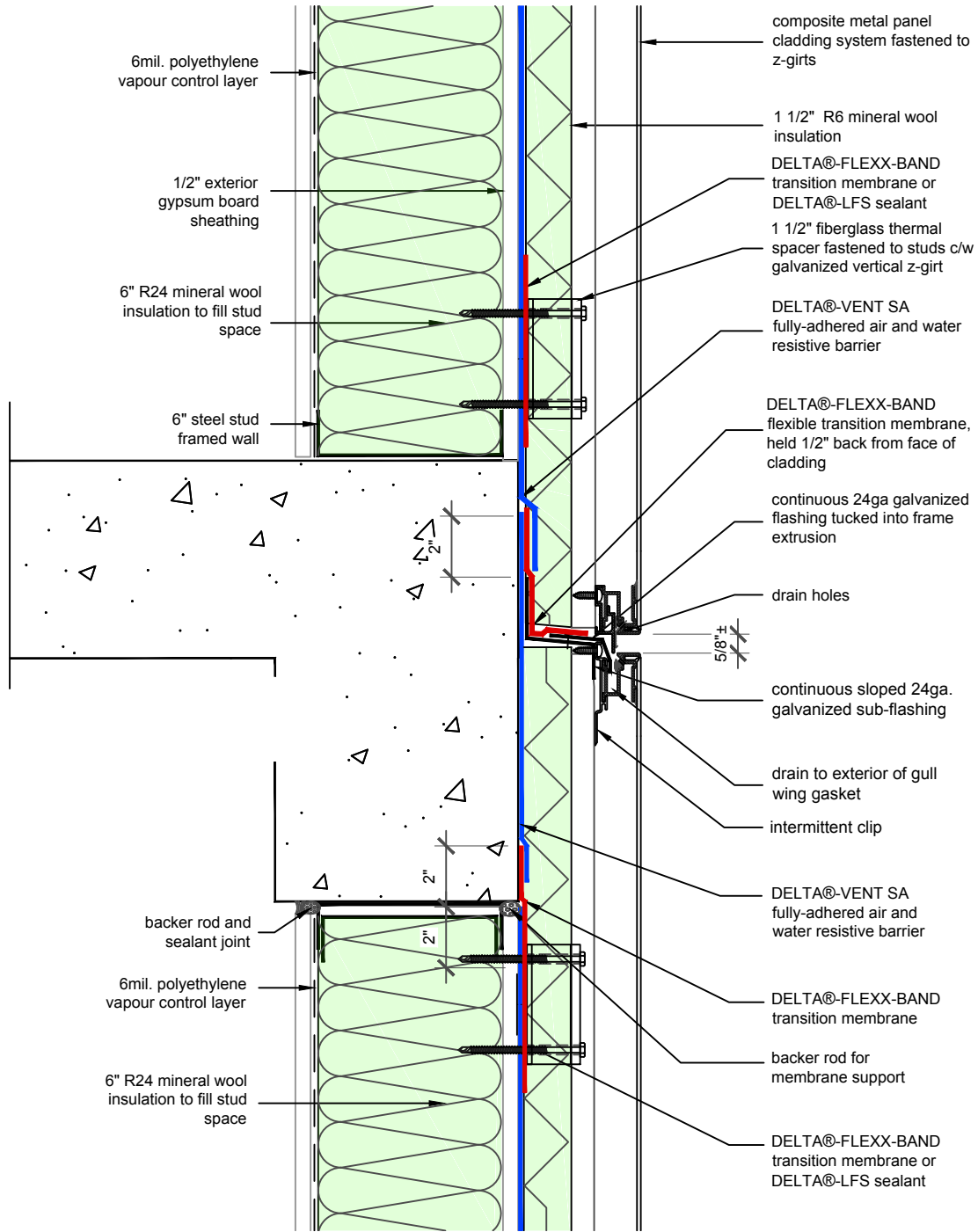
## WALL ASSEMBLY #4: TYPICAL BASE OF WALL AT FOUNDATION

DRAWN BY: DÖRKEN SYSTEMS INC.  
KRZYSZTOF APRIASZ C. Tech. CPHC®

**DÖRKEN**

**DELTA®**

4655 DELTA WAY BEAMSVILLE, ON.  
L3J 0T6 CANADA



SUBSTANTIAL EFFORT HAS BEEN MADE TO ENSURE THAT THE INFORMATION IN THIS DETAIL DRAWING IS ACCURATE. DÖRKEN SYSTEMS INC. CANNOT ACCEPT RESPONSIBILITY FOR ANY ERRORS OR OVERSIGHTS IN THE USE OF THIS MATERIAL OR IN THE PREPARATION OF ARCHITECTURAL OR ENGINEERING PLANS. THE DESIGN PROFESSIONAL MUST RECOGNIZE THAT NO DESIGN DETAIL CAN SUBSTITUTE FOR EXPERIENCED ENGINEERING AND PROFESSIONAL JUDGEMENT.

TITLE:

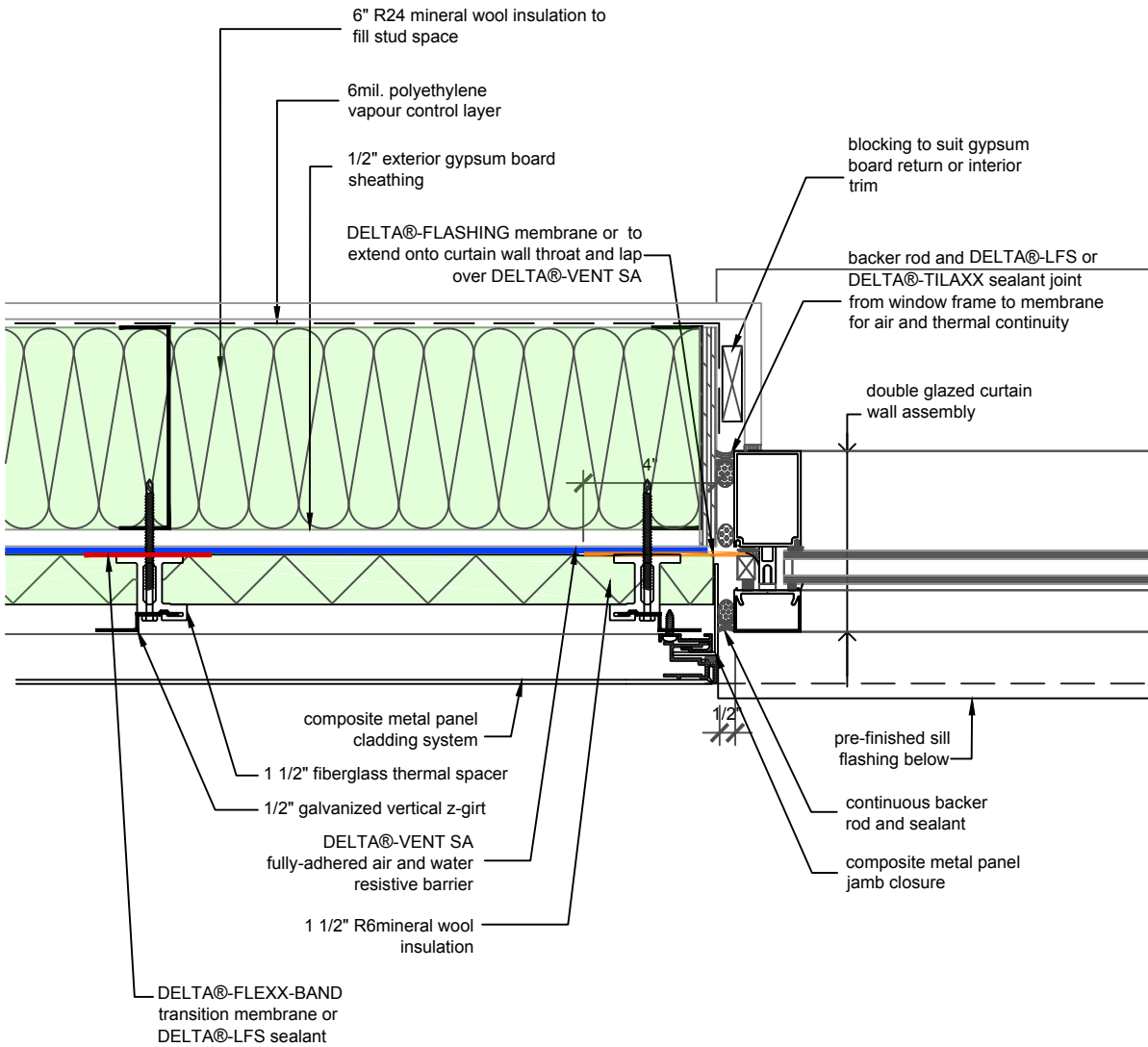
### WALL ASSEMBLY #4: TYPICAL CLADDING ATTACHMENT AT WALL

DRAWN BY: DÖRKEN SYSTEMS INC.  
KRZYSZTOF APRIASZ C. Tech. CPHC®

**DÖRKEN**

**DELTA®**

4655 DELTA WAY BEAMSVILLE, ON.  
L3J 0T6 CANADA



SUBSTANTIAL EFFORT HAS BEEN MADE TO ENSURE THAT THE INFORMATION IN THIS DETAIL DRAWING IS ACCURATE. DÖRKEN SYSTEMS INC. CANNOT ACCEPT RESPONSIBILITY FOR ANY ERRORS OR OVERSIGHTS IN THE USE OF THIS MATERIAL OR IN THE PREPARATION OF ARCHITECTURAL OR ENGINEERING PLANS. THE DESIGN PROFESSIONAL MUST RECOGNIZE THAT NO DESIGN DETAIL CAN SUBSTITUTE FOR EXPERIENCED ENGINEERING AND PROFESSIONAL JUDGEMENT.

TITLE:

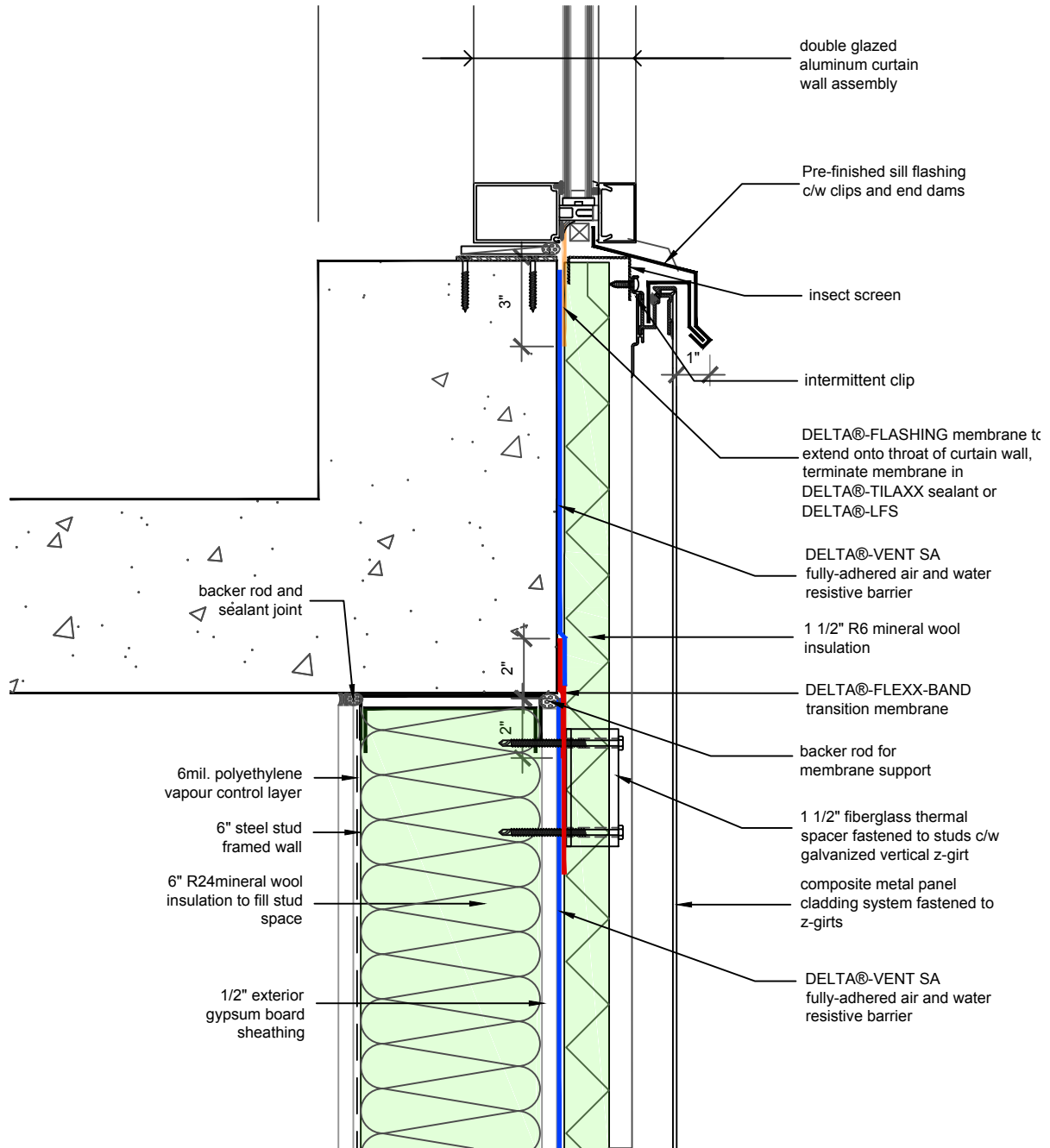
## WALL ASSEMBLY #4: TYPICAL CURTAIN WALL JAMB

DRAWN BY: DÖRKEN SYSTEMS INC.  
KRZYSZTOF APRIASZ C. Tech. CPHC®

 DÖRKEN

**DELTA®**

4655 DELTA WAY BEAMSVILLE, ON.  
L3J 0T6 CANADA



SUBSTANTIAL EFFORT HAS BEEN MADE TO ENSURE THAT THE INFORMATION IN THIS DETAIL DRAWING IS ACCURATE. DÖRKEN SYSTEMS INC. CANNOT ACCEPT RESPONSIBILITY FOR ANY ERRORS OR OVERSIGHTS IN THE USE OF THIS MATERIAL OR IN THE PREPARATION OF ARCHITECTURAL OR ENGINEERING PLANS. THE DESIGN PROFESSIONAL MUST RECOGNIZE THAT NO DESIGN DETAIL CAN SUBSTITUTE FOR EXPERIENCED ENGINEERING AND PROFESSIONAL JUDGEMENT.

TITLE:

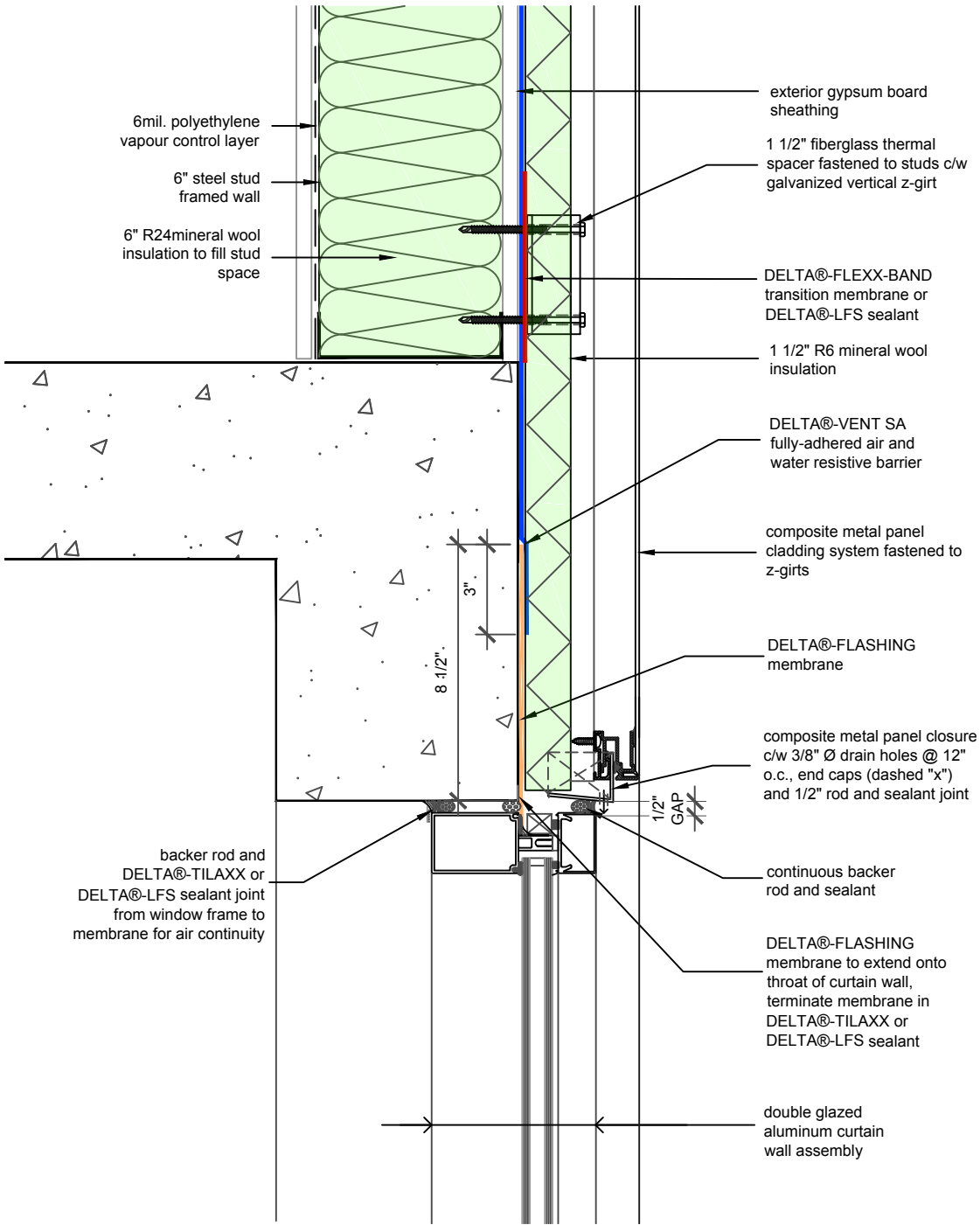
WALL ASSEMBLY #4:  
TYPICAL CURTAIN WALL  
SILL

DRAWN BY: DÖRKEN SYSTEMS INC.  
KRZYSZTOF APRIASZ C. Tech. CPHC®

 DÖRKEN

 DELTA®

4655 DELTA WAY BEAMSVILLE, ON.  
L3J 0T6 CANADA



SUBSTANTIAL EFFORT HAS BEEN MADE TO ENSURE THAT THE INFORMATION IN THIS DETAIL DRAWING IS ACCURATE. DÖRKEN SYSTEMS INC. CANNOT ACCEPT RESPONSIBILITY FOR ANY ERRORS OR OVERSIGHTS IN THE USE OF THIS MATERIAL OR IN THE PREPARATION OF ARCHITECTURAL OR ENGINEERING PLANS. THE DESIGN PROFESSIONAL MUST RECOGNIZE THAT NO DESIGN DETAIL CAN SUBSTITUTE FOR EXPERIENCED ENGINEERING AND PROFESSIONAL JUDGEMENT.

TITLE:

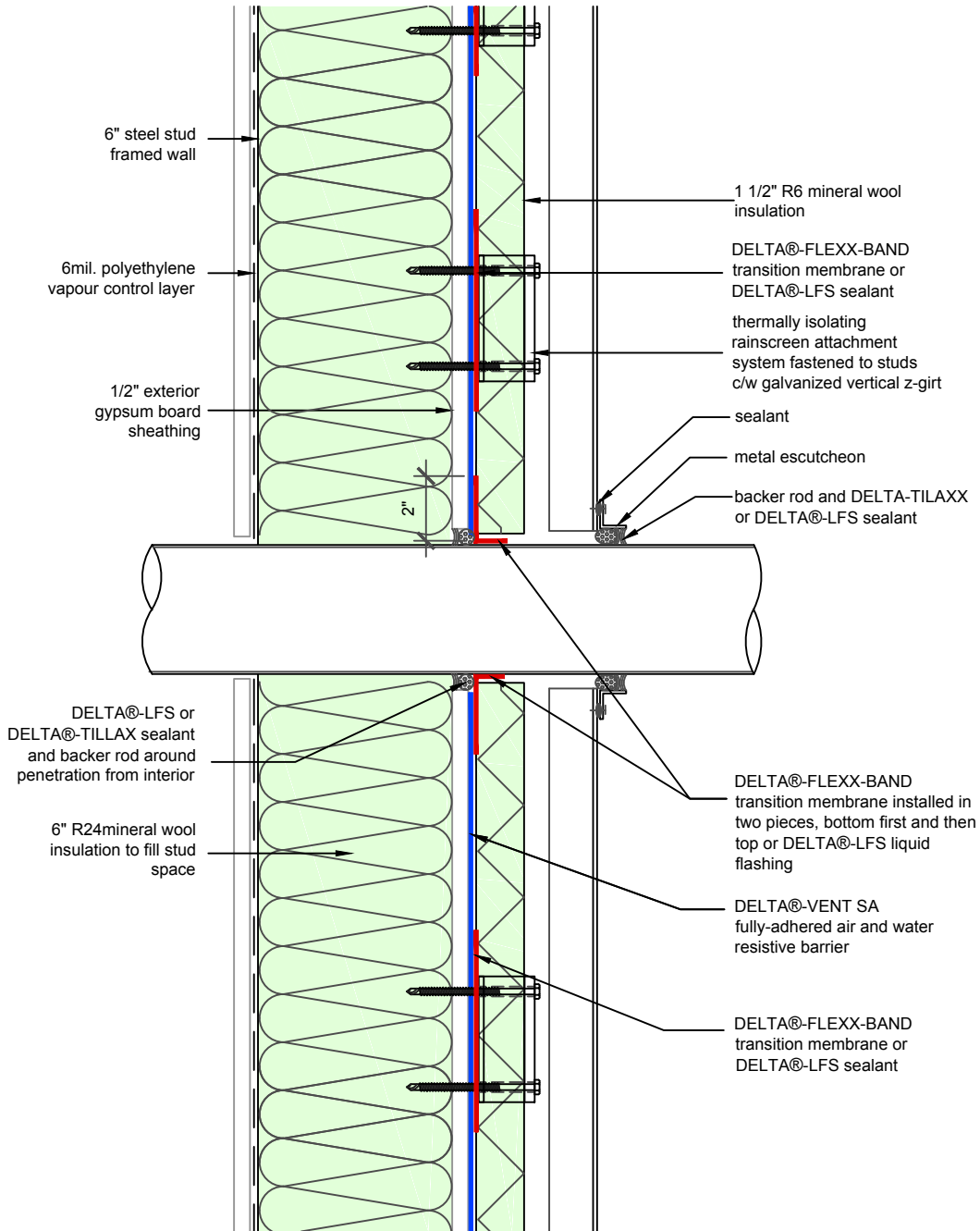
## WALL ASSEMBLY #4: TYPICAL CURTAIN WALL HEAD

DRAWN BY: DÖRKEN SYSTEMS INC.  
KRZYSZTOF APRIASZ C. Tech. CPHC®

 **DÖRKEN**

**DELTA®**

4655 DELTA WAY BEAMSVILLE, ON.  
L3J 0T6 CANADA



SUBSTANTIAL EFFORT HAS BEEN MADE TO ENSURE THAT THE INFORMATION IN THIS DETAIL DRAWING IS ACCURATE. DÖRKEN SYSTEMS INC. CANNOT ACCEPT RESPONSIBILITY FOR ANY ERRORS OR OVERSIGHTS IN THE USE OF THIS MATERIAL OR IN THE PREPARATION OF ARCHITECTURAL OR ENGINEERING PLANS. THE DESIGN PROFESSIONAL MUST RECOGNIZE THAT NO DESIGN DETAIL CAN SUBSTITUTE FOR EXPERIENCED ENGINEERING AND PROFESSIONAL JUDGEMENT.

TITLE:

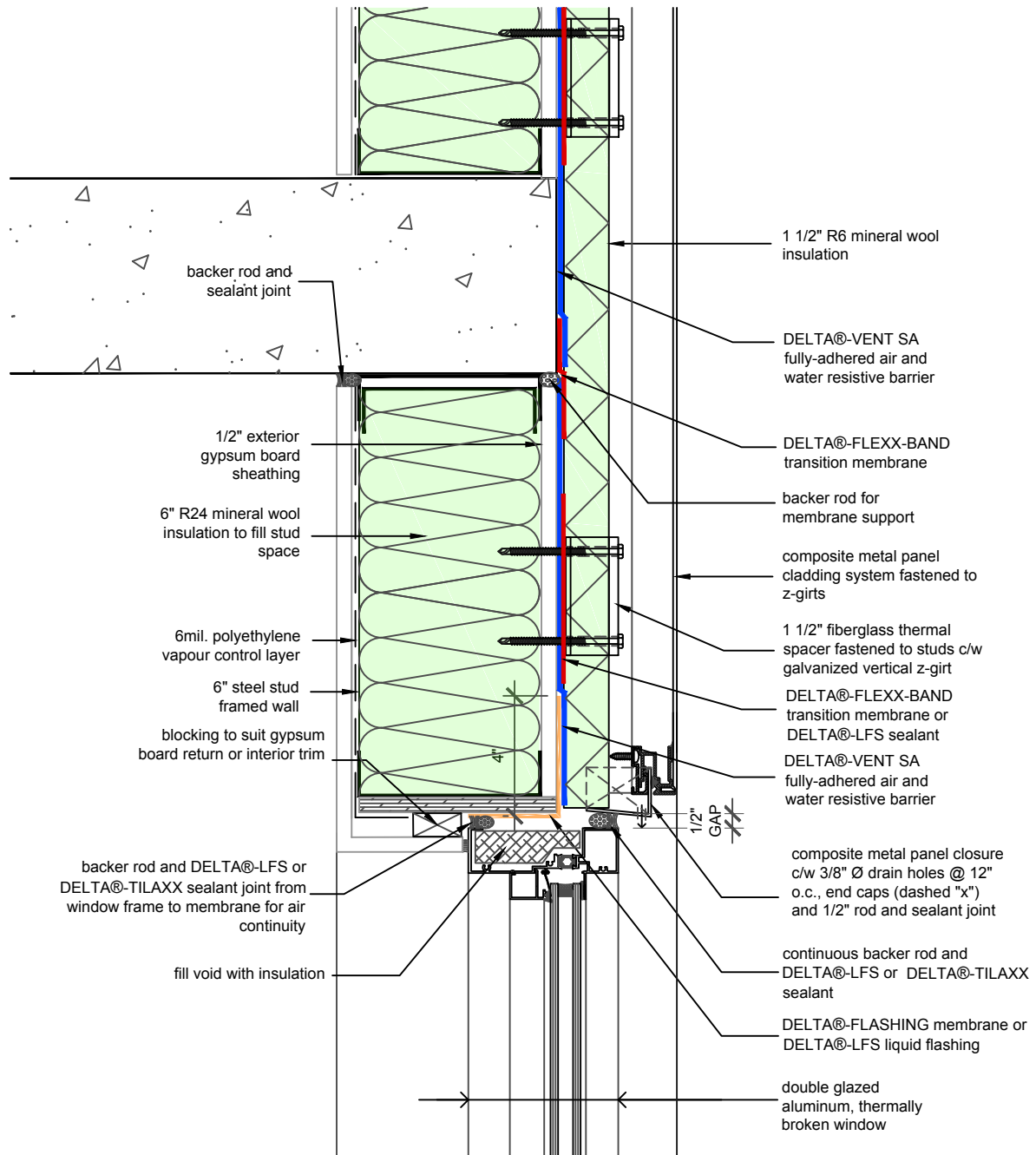
## WALL ASSEMBLY #4: TYPICAL PENETRATION

DRAWN BY: DÖRKEN SYSTEMS INC.  
KRZYSZTOF APRIASZ C. Tech. CPHC®

**DÖRKEN**

**DELTA®**

4655 DELTA WAY BEAMSVILLE, ON.  
L3J 0T6 CANADA



SUBSTANTIAL EFFORT HAS BEEN MADE TO ENSURE THAT THE INFORMATION IN THIS DETAIL DRAWING IS ACCURATE. DÖRKEN SYSTEMS INC. CANNOT ACCEPT RESPONSIBILITY FOR ANY ERRORS OR OVERSIGHTS IN THE USE OF THIS MATERIAL OR IN THE PREPARATION OF ARCHITECTURAL OR ENGINEERING PLANS. THE DESIGN PROFESSIONAL MUST RECOGNIZE THAT NO DESIGN DETAIL CAN SUBSTITUTE FOR EXPERIENCED ENGINEERING AND PROFESSIONAL JUDGEMENT.

TITLE:

## WALL ASSEMBLY #4: PUNCHED WINDOW HEAD

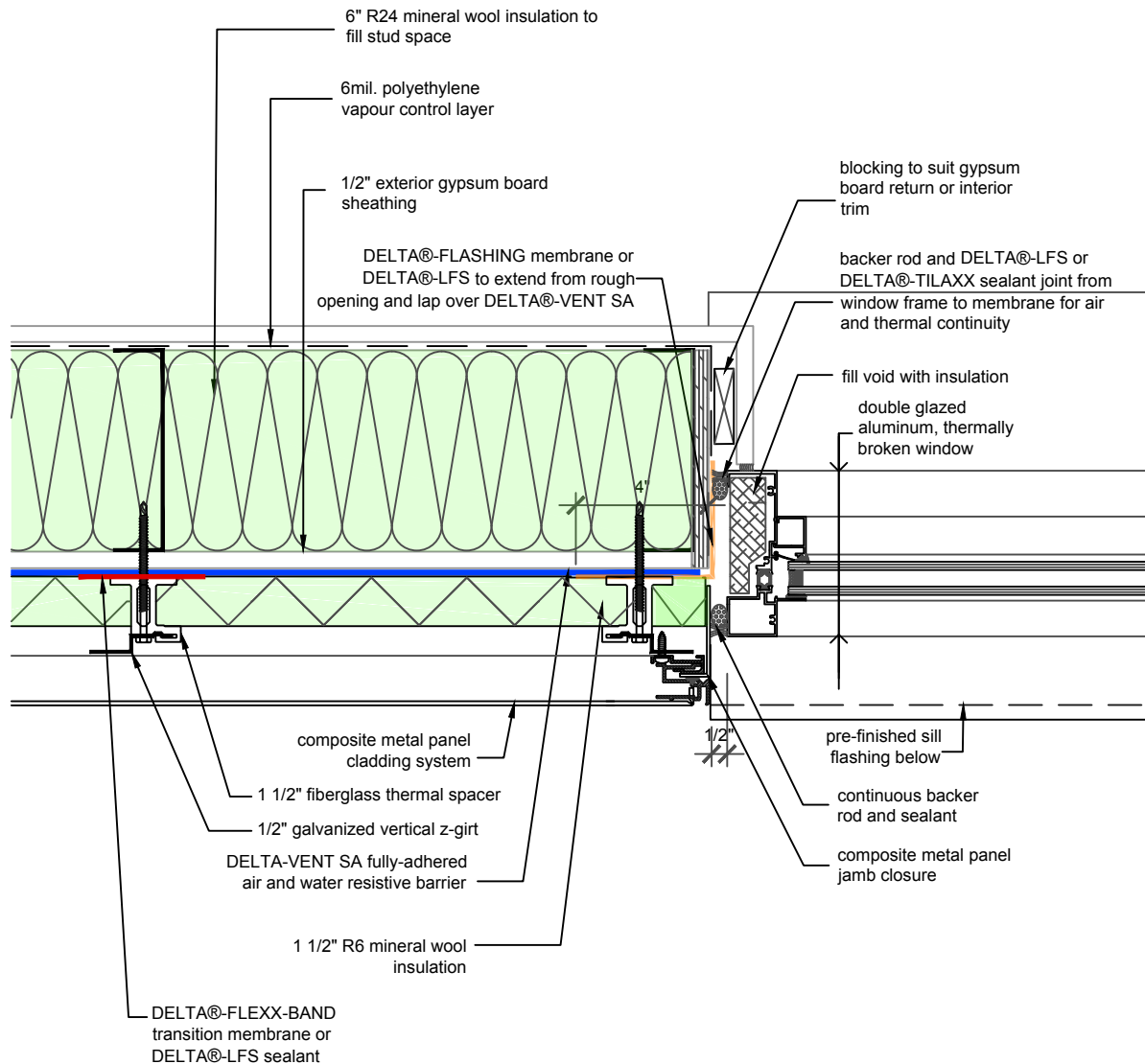
DRAWN BY: DÖRKEN SYSTEMS INC.  
KRZYSZTOF APRIASZ C. Tech. CPHC®

 DÖRKEN

**DELTA®**

4655 DELTA WAY BEAMSVILLE, ON.  
L3J 0T6 CANADA





SUBSTANTIAL EFFORT HAS BEEN MADE TO ENSURE THAT THE INFORMATION IN THIS DETAIL DRAWING IS ACCURATE. DÖRKEN SYSTEMS INC. CANNOT ACCEPT RESPONSIBILITY FOR ANY ERRORS OR OVERSIGHTS IN THE USE OF THIS MATERIAL OR IN THE PREPARATION OF ARCHITECTURAL OR ENGINEERING PLANS. THE DESIGN PROFESSIONAL MUST RECOGNIZE THAT NO DESIGN DETAIL CAN SUBSTITUTE FOR EXPERIENCED ENGINEERING AND PROFESSIONAL JUDGEMENT.

TITLE:

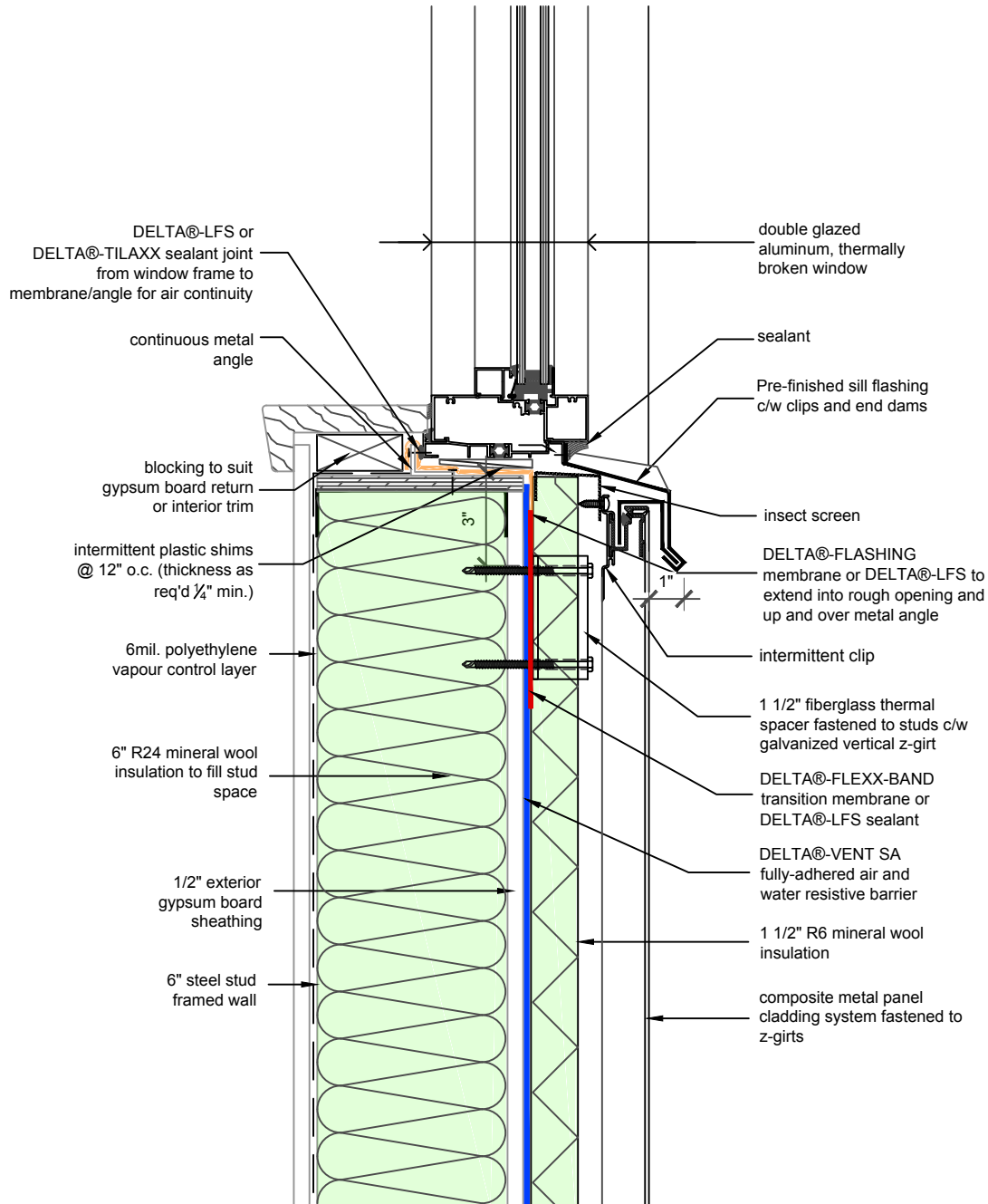
## WALL ASSEMBLY #4: PUNCHED WINDOW JAMB

DRAWN BY: DÖRKEN SYSTEMS INC.  
KRZYSZTOF APRIASZ C. Tech. CPHC®

**DÖRKEN**

**DELTA®**

4655 DELTA WAY BEAMSVILLE, ON.  
L3J 0T6 CANADA



SUBSTANTIAL EFFORT HAS BEEN MADE TO ENSURE THAT THE INFORMATION IN THIS DETAIL DRAWING IS ACCURATE. DÖRKEN SYSTEMS INC. CANNOT ACCEPT RESPONSIBILITY FOR ANY ERRORS OR OVERSIGHTS IN THE USE OF THIS MATERIAL OR IN THE PREPARATION OF ARCHITECTURAL OR ENGINEERING PLANS. THE DESIGN PROFESSIONAL MUST RECOGNIZE THAT NO DESIGN DETAIL CAN SUBSTITUTE FOR EXPERIENCED ENGINEERING AND PROFESSIONAL JUDGEMENT.

TITLE:

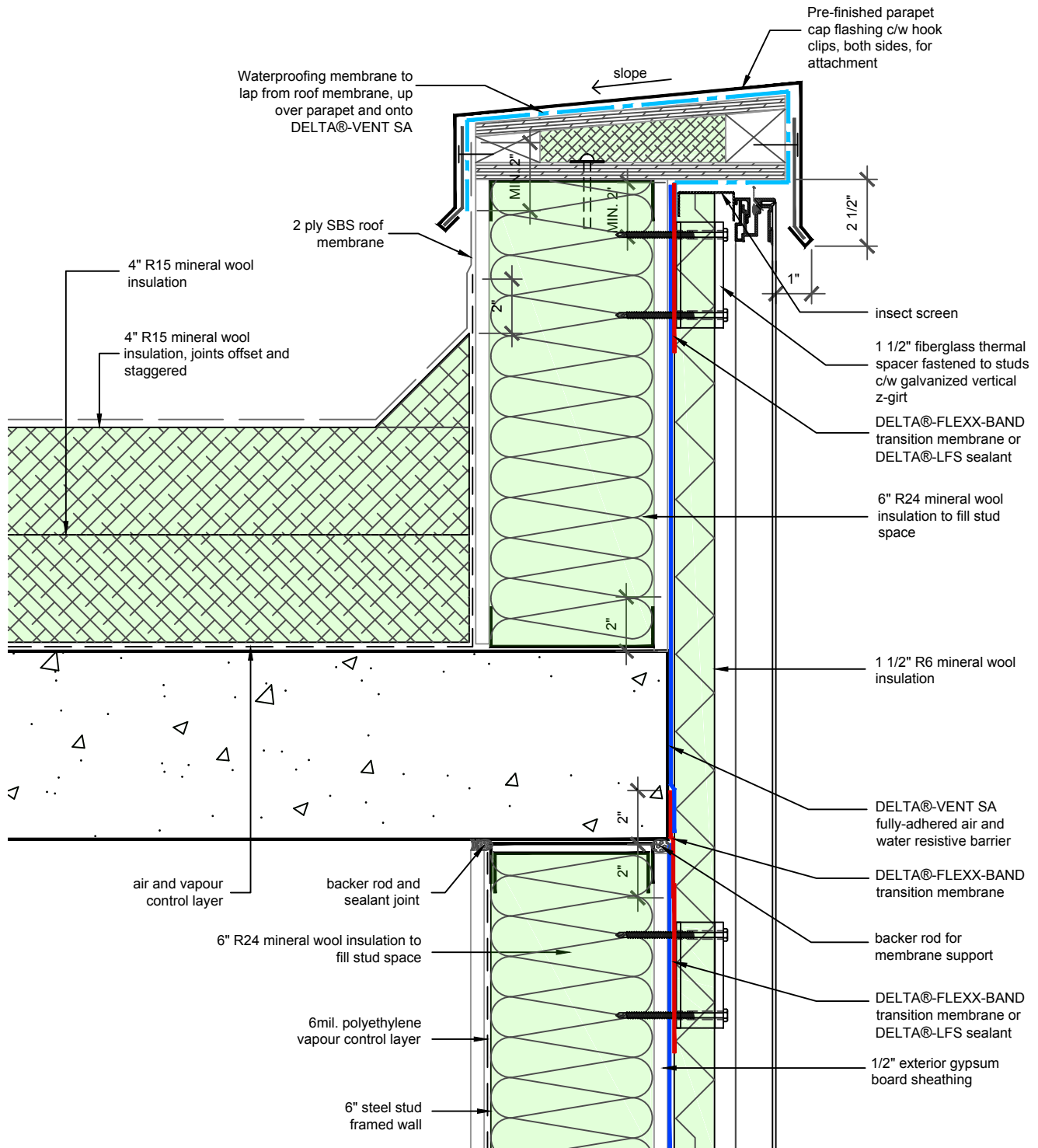
## WALL ASSEMBLY #4: PUNCHED WINDOW SILL

DRAWN BY: DÖRKEN SYSTEMS INC.  
KRZYSZTOF APRIASZ C. Tech. CPHC®

**DÖRKEN**

**DELTA®**

4655 DELTA WAY BEAMSVILLE, ON.  
L3J 0T6 CANADA



SUBSTANTIAL EFFORT HAS BEEN MADE TO ENSURE THAT THE INFORMATION IN THIS DETAIL DRAWING IS ACCURATE. DÖRKEN SYSTEMS INC. CANNOT ACCEPT RESPONSIBILITY FOR ANY ERRORS OR OVERSIGHTS IN THE USE OF THIS MATERIAL OR IN THE PREPARATION OF ARCHITECTURAL OR ENGINEERING PLANS. THE DESIGN PROFESSIONAL MUST RECOGNIZE THAT NO DESIGN DETAIL CAN SUBSTITUTE FOR EXPERIENCED ENGINEERING AND PROFESSIONAL JUDGEMENT.

TITLE:

## WALL ASSEMBLY #4: ROOF TO WALL SECTION

DRAWN BY: DÖRKEN SYSTEMS INC.  
KRZYSZTOF APRIASZ C. Tech. CPHC®

**DÖRKEN**

**DELTA®**

4655 DELTA WAY BEAMSVILLE, ON.  
L3J 0T6 CANADA