

DELTA®-FASSADE SA

Self-Adhered Vapor Permeable Water-resistive & Air Barrier for Open Joint Cladding Systems Installation Instructions Flange Window Strip-in Method

Health and Safety

- Required safety equipment: hard hat, safety boots, gloves, safety glasses, fall arrest equipment.
- Always follow all safety precautions as directed by the Occupational Safety and Health Administration (OSHA-USA) or the Construction Safety Association (Canada).
- Please refer to Safety Data Sheets for all components and observe all recommended safety precautions therein.
- The general codes of practice for protection at work and instructions of the manufacturers for tools and components are to be observed at all times.

Recommended Materials

- DELTA®-FASSADE SA
- DELTA®-HF PRIMER, DELTA®-ADHESIVE LVC or DELTA®-ADHESIVE (cold weather)
- DELTA®-FAS CORNER (pre-fabricated window corner)
- DELTA®-FLEXX-BAND (flexible flashing)
- DELTA®-FASSADE TAPE
- DELTA®-FASSADE FLASHING
- DELTA®-TILAXX

Recommended Tools

- Utility knife
- Measuring tape
- Hand roller (for membrane installation)
- Paint roller (for application of primer)

Substrate Conditions and Preparation

Appropriate substrate conditions are critical to obtain proper adhesion. Ensure surfaces are ready for product installation and are in accordance with these installation instructions.

- All surfaces must be sound, dry, clean and free of dust, oil, grease, ice, dirt, excess mortar or other contaminants detrimental to the adhesion of the membrane.
- Wood substrates (including OSB) must meet USDA recommendations for dry lumber at the time of use (U.S.D.A. Forest Service "Moisture Content of Wood" research note FPL - 0226 1973 table 1).
- Precipitation in days immediately before installation will increase wood substrate moisture content. Allow sufficient time to dry prior to installation of membrane. Ensure moisture content of wood substrate is 12% or less.
- Ensure protrusions that may penetrate the membrane are removed from substrate. Mechanical fasteners used to secure substrate shall be set flush with substrate and secured into solid backing.
- If being applied to concrete or masonry substrates, fill voids, gaps and spalled areas in substrate to provide an even plane. Strike masonry joints full-flush.
- Curing compounds or release agents used in concrete construction must be resin-based without oil, wax or pigments.
- New concrete should be cured for a minimum of fourteen (14) days and must be dry prior to primer application.
- Not all product installations require the use of primer. However, in certain exceptions primer may be used to enhance adhesion. The ability of self-adhering membranes to adhere to a substrate may become compromised by irregular surface texture, chemical release agents, moisture content, dirt and debris, or even low temperatures or high wind conditions. An adhesion test is recommended to confirm substrate suitability. Adhesion enhancements are required when an assembly is unable to maintain a continuous and secure installation. Where enhanced adhesion is needed, Dörken Systems Inc. offers DELTA®-HF PRIMER (water-based, highly vapor permeable), DELTA®-ADHESIVE LVC or DELTA®-ADHESIVE (cold weather) for surface preparation.
- See Technical Memorandum [Cold Weather Application of DELTA® Self-adhering Membranes](#).
- Important: apply primers in thin coat

- To ensure the continuity of air and water-resistive barrier, it is essential to install DELTA®-FASSADE SA and all DELTA® components in a manner that seals all the potential leakage points:
 - Connections of the walls to the roof air barrier
 - Connections of the walls to the foundation
 - Seismic and expansion joints
 - Piping, conduit, duct and similar penetrations
 - Masonry ties, screws, bolts and similar penetrations

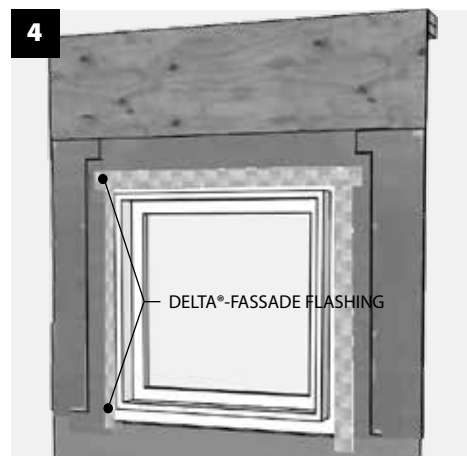
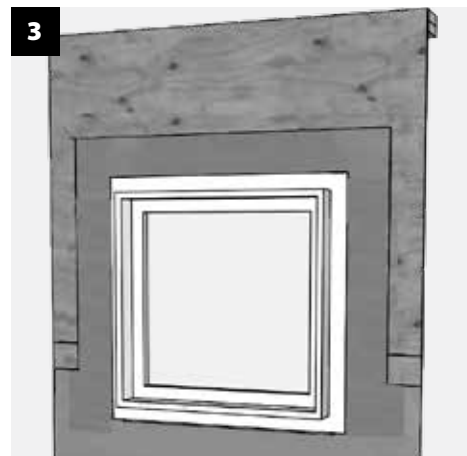
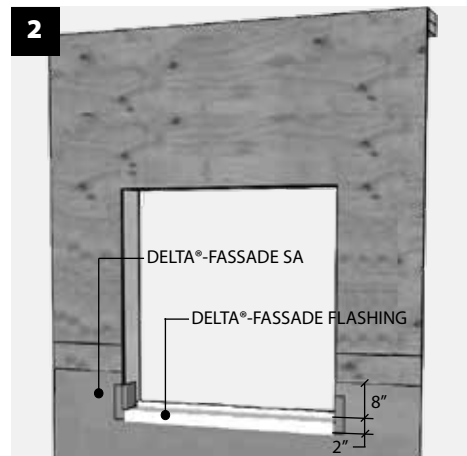
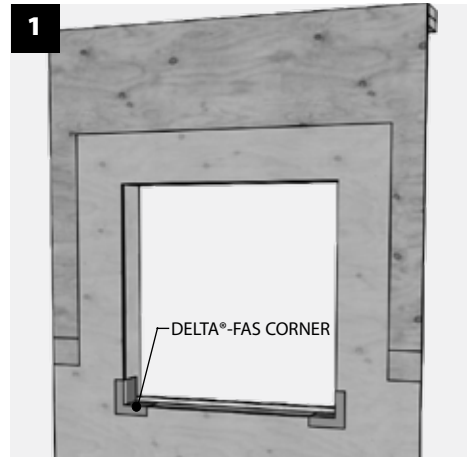
- Changes in plane
- All other potential air leakage pathways in the building enclosure
- These installation instructions for DELTA®-FASSADE SA are intended only as a guide and are for the convenience of the contractors, specifiers, and other interested parties. The final application and details are the sole responsibility of the design authority on record for the project.
- DELTA®-FASSADE SA membrane should be installed at 40°F (4°C) and above. In cold weather, store rolls in warm area to enhance adhesion and workability. Do not install DELTA®-FASSADE SA in adverse weather conditions. High winds may hamper application.
- It is recommended that DELTA®-FASSADE SA be installed prior to the installation of seismic traps.
- If sealant is required, DELTA®-TILAXX is recommended.
- Do not use sealants, flashings, products or chemicals that contain surfactants on DELTA® water-resistive and air barrier membranes because they can adversely affect the water hold-out properties of any PP spunbond-based water-resistive barrier. Such products may include asphaltic materials, various chemicals, acid-based silicones, cleaning compounds, and certain formulations of liquid flashings, e.g. specific STP-based materials. Always confirm compatibility with the manufacturer's published technical data sheets and with the manufacturer's technical department.
- Always cover as soon as possible. Maximum exposure 30 weeks (prior to installation of cladding). Openings in the cladding system must not exceed 2" (50 mm) width which expose no more than 40% of entire facade surface.

Step 1 Installation

- If primer is being used, apply to substrate at recommended application rate. Apply only to areas where membrane will be applied that day.
- Cut DELTA®-FASSADE SA into manageable length. DELTA®-FASSADE SA can be installed vertically or horizontally.
- Starting at the corner of the building, align and position DELTA®-FASSADE SA to substrate. Remove release liner from top half of sheet and press DELTA®-FASSADE SA firmly into place. Ensure proper alignment of membrane to avoid wrinkles.
- Remove bottom half of release liner and press DELTA®-FASSADE SA firmly into place.
- At end laps (vertical), overlap DELTA®-FASSADE SA by 3" to 6" (75 mm to 150 mm).
- At side laps (horizontal), overlap DELTA®-FASSADE SA by minimum 2 1/2" (50 mm).
- Always begin the installation of DELTA®-FASSADE SA at bottom of the building to ensure proper downward shingling of side laps.
- Using hand roller, firmly roll all membrane surfaces to ensure appropriate adhesion.

Step 2 Wall/foundation transition

- If through-wall flashing (DELTA®-TW FLASHING) is installed, DELTA®-FASSADE SA should overlap by minimum of 6". Cover any area that maybe exposed by open joints with DELTA®-FASSADE FLASHING.
- If no through-wall flashing is installed, the bottom edge of DELTA®-FASSADE SA should extend beyond the sill plate by at least 2" (50 mm). Seal bottom edge with DELTA®-FASSADE FLASHING or DELTA®-FLEXX BAND. Use hand roller firmly to ensure appropriate adhesion. To ensure proper adhesion, prime substrate with DELTA®-HF PRIMER, DELTA®-ADHESIVE LVC or DELTA®-ADHESIVE.



Step 3 Window

- Install DELTA®-FAS CORNER in lower corners of rough opening. Staple on vertical leg for temporary support (see Detail 1).
- Install DELTA®-FASSADE SA membrane below window with cut out minimum 8" (200 mm) above sill. Install DELTA®-FLASHING membrane at sill. Overlap 2" (50 mm) onto vertical DELTA®-FASSADE SA membrane below (see Detail 2).
- Install DELTA®-FASSADE SA membrane strip to wrap jamb. Lap 8" (200 mm) onto face of wall at jamb, minimum 3" (75 mm) at head. Install DELTA®-FASSADE SA membrane at head of rough opening. Lap minimum 8" (200 mm) onto face of wall at head.
- Install window shims in accordance with window manufacturer's specifications, typically at quarter points of rough opening and under setting block locations for window. Install window in accordance with manufacturer's specifications. Generally, the gap between window and rough opening should be around 1/2" (12 mm).
- From interior, install backer rod around the full perimeter of window. Install DELTA®-TILAXX sealant around perimeter of window. Alternate air sealing detail; apply low expansion spray foam around full perimeter of window. Do not seal full cavity to allow drainage from sill flashing.

Step 4 Installation of membrane

- Prime sheathing with DELTA®-HF PRIMER, DELTA®-ADHESIVE LVC or DELTA®-ADHESIVE before applying DELTA®-FASSADE SA.
- Tape DELTA®-FASSADE SA to window flange at both jambs with DELTA®-FASSADE TAPE or DELTA®-FASSADE FLASHING 4" (see Detail 4).
- Install DELTA®-FASSADE SA membrane above head of window, overlapping window flange and lower membrane sheets (see Detail 5).
- Using hand roller, firmly roll all membrane surfaces to ensure appropriate adhesion.

Step 5 Penetrations

- Cut DELTA®-FASSADE SA around penetrations as tightly as possible.
- Seal gaps between penetration and substrate with DELTA®-TILAXX sealant.
- Install DELTA®-FLEXX BAND around the penetration (see Detail 6).

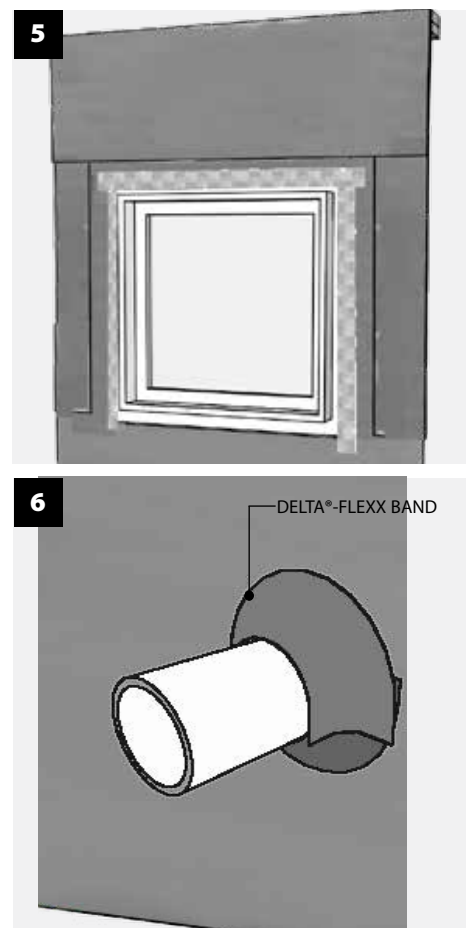
Step 6 Inspection

- Inspect the DELTA®-FASSADE SA for rips, tears, or other installation deficiencies in the continuity. Tape rips, tears or holes smaller than 2" (50 mm) with DELTA®-FASSADE TAPE.
- For holes greater than 2" (50 mm), a patch is required.
 - Cut a patch minimum 6" (150 mm) larger than the hole. Install patch of DELTA®-FASSADE SA over the hole.
 - Remove release liner, press the patch firmly into place, and hand roll.
 - Tape the patch with DELTA®-FASSADE TAPE in the following order:
 1. Bottom
 2. Sides
 3. Top

Step 7

- Clean up all excess materials and dispose of properly.

For technical support, call our Technical Support Team at 1-888-433-5824 extension 326, or visit www.dorken.com



DELTA® is a registered trademark of Ewald Dörken AG, Herdecke, Germany