

DELTA[®]-FOXX

Vapor Permeable Roof Underlayment Installation Instructions

Health and Safety

- Required safety equipment: hard hat, safety boots, gloves, safety glasses, fall arrest equipment.
- Always follow all safety precautions as directed by the Occupational Safety and Health Administration (OSHA-USA) or the Construction Safety Association (Canada).
- Please refer to Safety Data Sheets for all components and observe all recommended safety precautions therein.
- The general codes of practice for protection at work and instructions of the manufacturers for tools and components are to be observed at all times.

Recommended Materials

- DELTA[®]-FOXX
- DELTA[®]-THAN sealant
- DELTA[®]-MULTI BAND tape
- DELTA[®]-FLEX-BAND tape

Recommended Tools

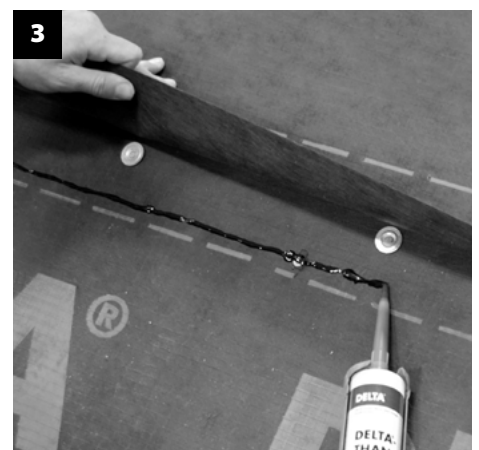
- Utility knife or scissors
- Caulking gun
- Hammer or automated nailing gun
- Roofing nails, minimum 1" (2.5 cm) long with minimum 1" (2.5 cm) diameter plastic or metal cap

Notes and Limitations

- These installation instructions for DELTA[®]-FOXX are intended only as a guide and are for the convenience of the contractors, specifiers, and other interested parties. The final application and details are the sole responsibility of the design authority on record for the project.
- Always confirm the local Building Code requirements prior to installation.
- Do not install DELTA[®]-FOXX in adverse weather conditions. High winds may hamper application.
- The substrate should be dry prior to application.
- Cap nails can be either pneumatically or hand fastened.
- In all typical wind areas, install fasteners at 12" (30 cm) on center along sides and end laps. In high wind areas and coastal areas, install fasteners at 6" (15 cm) on center along sides and end laps.
- It is strongly recommended that the installation be done with entirely concealed fasteners for the best precipitation resistance and air tightness.
- Prior to beginning the installation of the DELTA[®]-FOXX, install drip edge at all eaves and ice dam barrier, if required by the local Building Code.
- Ensure protrusions that may penetrate the membrane are removed from substrate.
- Product is not designed for permanent UV exposure. Always cover as soon as possible.

Installation

- Always begin the installation of DELTA[®]-FOXX at the eaves of the roof to ensure proper downward shingling of the horizontal laps.
- DELTA[®]-FOXX is installed as an underlayment membrane, horizontally (parallel to the eaves), starting at the eaves. The printed side must be facing up. The membrane can be run left to right or right to left along the roof plane.
- On roof slopes between 2:12 and 4:12, install DELTA[®]-FOXX with minimum 6" (15 cm) side laps (run top sheet along top of letter on lower sheet) and minimum 8" (20 cm) end laps. On roof slopes 4:12 or greater, install DELTA[®]-FOXX with minimum 4" (10 cm) side (horizontal) laps (a line is marked on the membrane for ease of



installation), (see Detail 1), and minimum 6" (15 cm) end (vertical) laps.

- Secure DELTA®-FOXX to the deck at 12" (30 cm) o/c, or 6" (15 cm) o/c in areas of high wind and coastal areas (see Detail 2).
- For installation with entirely concealed fasteners, fasten only the top of the membrane, followed by sealing all side/end laps with DELTA®-THAN. Install the fasteners approximately midway between the upper edge of the material and the horizontal lap line. Apply DELTA®-THAN in a continuous 3/16" (4.8 mm) bead along entire side/end laps. Place the continuous bead roughly 1/2" (1.2 cm) underneath the overlap (see Detail 3).
- Any exposed fasteners must be covered with DELTA®-MULTI BAND.
- Extend DELTA®-FOXX at least 6" (15 cm) up on sides of chimneys, vertical walls, etc. To ensure a secure and watertight seal, fasten the underlayment to the surface with DELTA®-THAN or DELTA®-MULTI BAND (see Detail 4, 5).

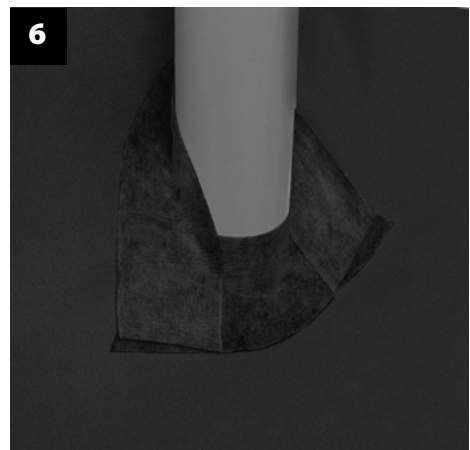
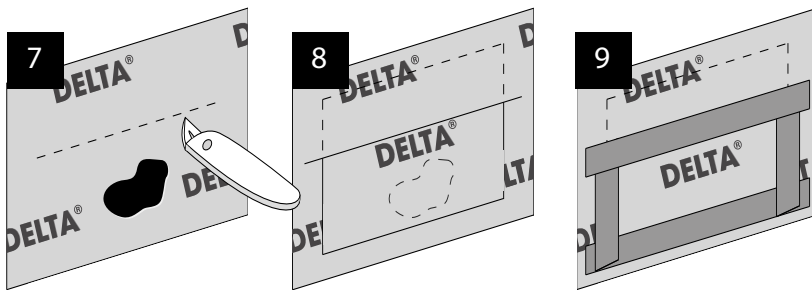
Service Penetrations

- When encountering a service penetration protruding from the roof deck, "X-cut" DELTA®-FOXX to fit over protrusions. Seal directly to the protrusion using either DELTA®-FLEXX-BAND or DELTA®-MULTI BAND, ensuring a secure and water-tight seal (see Detail 6).

Inspection and Clean-up

- Patch any rips or holes in the membrane less than 2" (5 cm) in diameter with DELTA®-MULTI BAND or DELTA®-FLEXX-BAND, centered over the tear.
- For holes greater than 2" (5 cm), a patch is required:
 - Cut a slit approximately 3" (8 cm) above the hole and approximately 3" (8 cm) wider than the hole (see Detail 7).
 - Cut a patch minimum 6" (15 cm) larger than the hole.
 - Slide the top edge up into the cut slit so that the patch covers the hole (see Detail 8).
 - Tape the patch in the following order (see Detail 9):
 1. Bottom
 2. Sides
 3. Top
- Install the final roof as per the manufacturer's installation instructions.

For technical support, call our Technical Support Team at 1-888-433-5824 extension 326, or visit www.dorken.com.



DÖRKEN Dörken Systems Inc.
4655 Delta Way
Beamsville, Ontario
L0R 1B4
1-(905) 563-3255
Fax: (905) 563-5582
info@dorken.com
www.dorken.com

A **DÖRKEN** GROUP company



DELTA®-branded quality products
manufactured by Dörken.

The information printed in this brochure reflects product information and specifications at the date of printing. The manufacturer reserves the right to make changes when necessary. All rights reserved.

