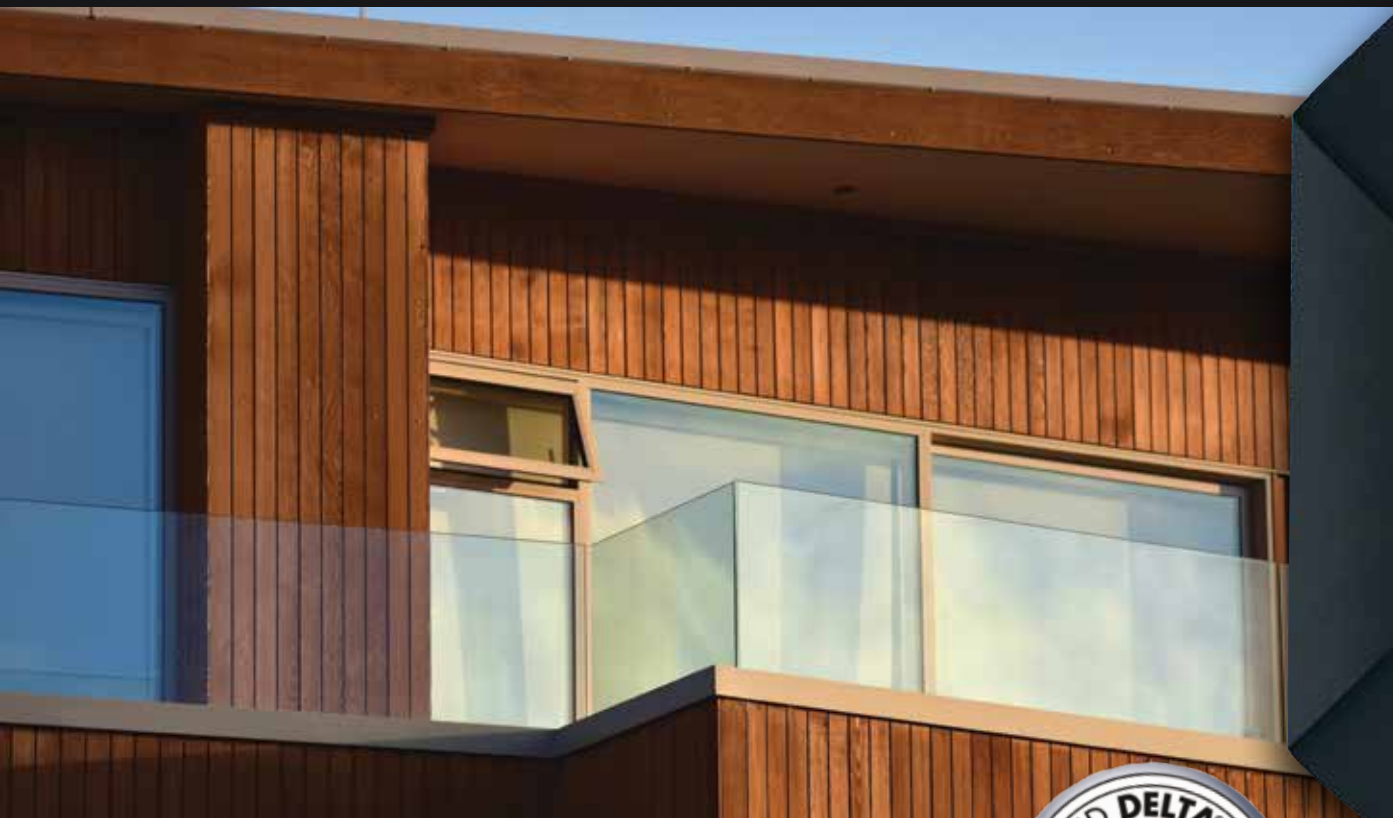


DELTA®-FASSADE SA

UV-resistant, fully adhered water-resistive barrier & air barrier specifically designed for open joint cladding systems.



High Performance UV-resistant, Air and Water-resistive Barrier

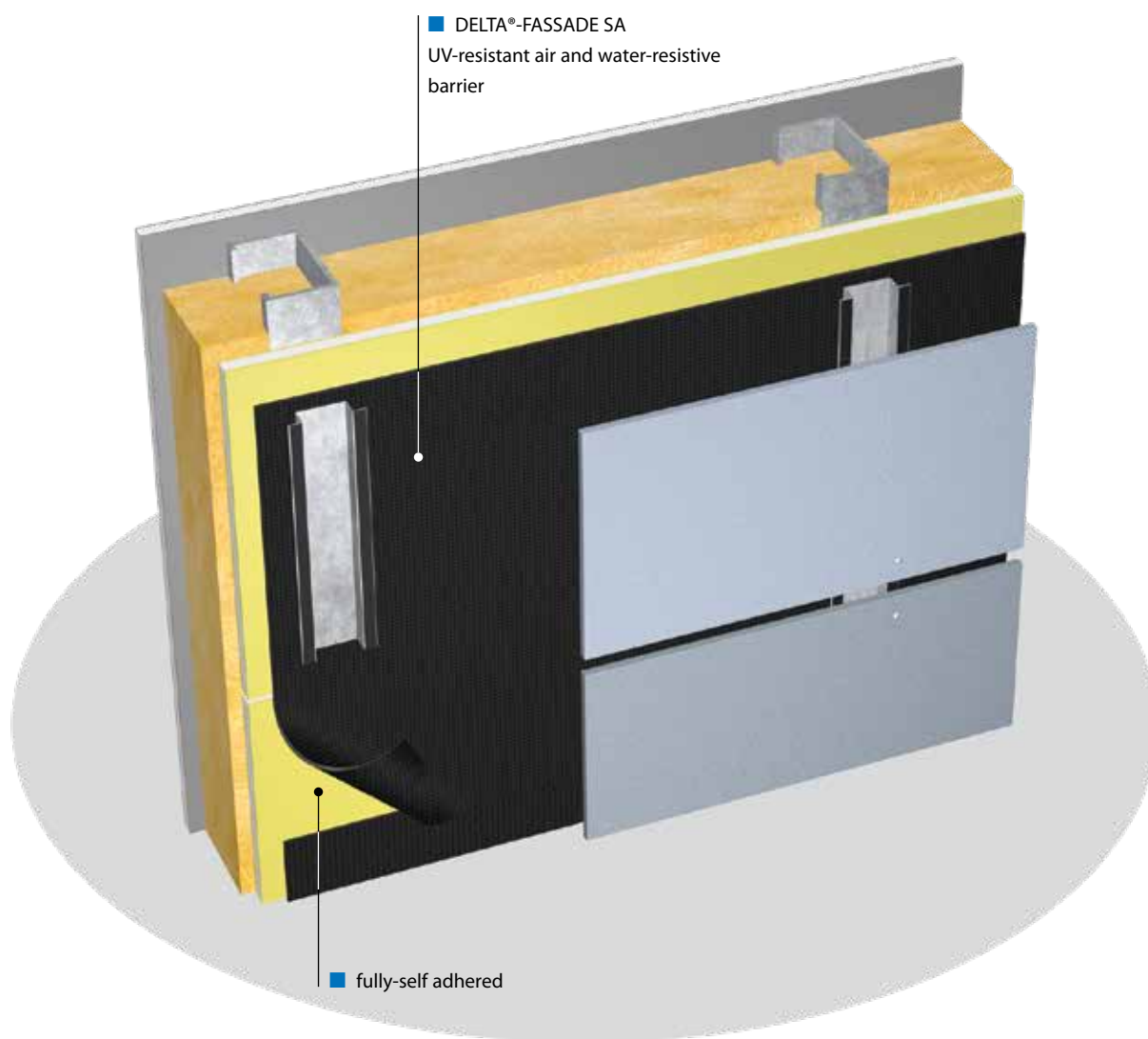


Fully Adhered Air Barrier:

DELTA®-FASSADE SA

The high performance solution for demanding open joint cladding systems.

Black color enhances appearance of open joint cladding.





- Designed for permanent UV exposure in open joint cladding systems.
- Aggressively self-adhesive.
- Consists of highly tear-resistant substrate with a waterproof coating.
- Meets industry's most stringent air barrier requirements.
- 3-layer polypropylene substrate with highly UV-resistant acrylic coating.
- May be installed in back-vented cladding systems featuring open joints up to 2" (50 mm) wide and open joint areas of up to 40% of the entire surface.
- Helps to ensure a healthy and comfortable interior climate.
- Ideal for use in metal and wood stud construction.
- Easy to install.
- Produced in our ISO 9001 registered manufacturing plant.

Technical Data Overview:

Color	black
Material	high strength spun-bonded polypropylene (PP) fabric with UV stable acrylic coating
Adhesive coating	Full surface coating with vapor permeable pressure-sensitive adhesive
Vapor permeance	30 perms [grains/h/ft ² /in Hg] ASTM E96-05, Proc. A 50 perms [grains/h/ft ² /in Hg] ASTM E96-05, Proc. B
Water Vapor Transmission	214 g/m ² /24 h ASTM E96-05, Proc. A 343 g/m ² /24 h ASTM E96-05, Proc. B
Tensile strength	MD 101lbf, XD 94lbf, ASTM D5034
Elongation at break	MD 40%, XD 58%, ASTM D5034
Water penetration resistance	No leakage, AATCC 127-1985
Air permeance	< 0.02 l/(s x m ²) @ 75 Pa, ASTM E2178
Service life expectancy	> 25 years, if installed behind cladding systems that have open joints of up to 2" (50 mm) width which expose no more than 40% of entire façade surface
Suitable applications	<ul style="list-style-type: none"> • Buildings under IRC • Type V-B construction under IBC • Buildings under 40' with no plastic foam insulation under IBC
Roll length	115' (35 m)
Roll width	4'11" (1.5 m), 19.5" (50 cm), 9.75 (25 cm)
Roll weight	approx. 44 lb (20 kg), 13 lb (6 kg), 6.5 lb (3 kg)

See Technical Data Sheet for further information.
For NFPA 285 compliance, contact our Technical Department.



DELTA®-Accessories for DELTA®-FASSADE SA.

Dörken makes your life easier – systematically.



DELTA®-FASSADE TAPE
UV resistant seam tape for use with DELTA®-FASSADE SA water-resistive barrier.



DELTA®-FASSADE FLASHING
self-adhering flashing with UV resistant coating for use with DELTA®-FASSADE SA water-resistive barrier.



DELTA®-TILAXX
high-performance adhesive and sealant specifically designed for use with all DELTA® air-, vapor-, and water-resistive barriers.



DELTA®-FAS CORNER
preformed to make corners in window and door openings air and water tight.



DELTA®-HF PRIMER
is a solvent-free primer for most construction substrates.

DELTA®



04/30/20 v1



Dörken Systems Inc.
4655 Delta Way
Beamsville,
ON L0R 1B4, Canada
Tel.: +1 (905) 563 3255
Fax: +1 (905) 563 5582
info@dorken.com
www.dorken.com

A DÖRKENGROUP company

The information printed in this brochure reflects product information and specifications at the date of printing. The manufacturer reserves the right to make changes when necessary.

All rights reserved.

DELTA®-branded quality products manufactured by Dörken.

Visit us on:



air barrier
abaa
association of
america

