

TECHNICAL DATA SHEET

DELTA®-FASSADE SA

Self-Adhered Water-resistive Barrier & Air Barrier for Façade Systems with Open Joint Claddings.

MATERIAL

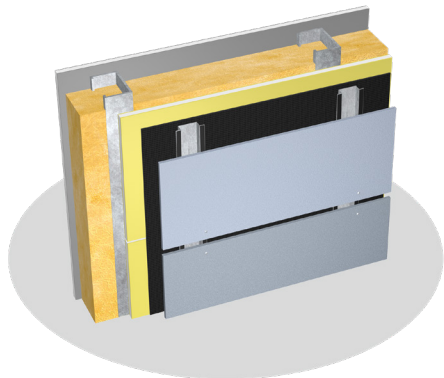
DELTA®-FASSADE SA is a 3-layer self-adhered water-resistive barrier (WRB) and air barrier with highly UV-stabilized acrylic coating. Its two outer layers are made of a high strength spun-bonded polypropylene (PP) fabric. They are thermally bonded to a highly vapor permeable, watertight polymeric middle layer. DELTA®-FASSADE SA maintains high vapor permeability and has a full surface coating of a high tack adhesive for bonding to common substrates. It has a split release liner for ease of application.

PROPERTIES

DELTA®-FASSADE SA, highly stabilized against damage from UV exposure, is designed for use in cladding systems that have open joints of up to 2" (50 mm) wide which expose up to 40 % of the entire facade surface. It acts as a durable drainage plane, channeling bulk (liquid) water from wind-driven rain and snow to the outside of the structure. The watertight membrane helps protect the building enclosure from damaging effects of moisture infiltration. Its high vapor permeability allows moisture within the cavity to escape swiftly. It is an air barrier that meets the industry's most stringent standards. DELTA®-FASSADE SA is light-weight and tear-resistant. This membrane withstands the rigors of jobsites, as well as tough wind and weather.

APPLICATION

DELTA®-FASSADE SA is installed outboard of the sheathing prior to the application of the final cladding system. DELTA® Accessories complete a UV resistant air barrier and WRB system. DELTA®-FASSADE SA is suitable for construction built under IRC (International Residential Code) or Type V-B construction under IBC (International Building Code).



DELTA® products support sustainable and energy-efficient building practices, including efforts toward achieving LEED® certification (LEED® for New Construction & Major Renovations, LEED® for Core and Shell, LEED® for Existing Buildings and LEED® for Homes).

For technical support, call our technical support team at 1-888-4DELTA4 (1-888-433-5824) extension 326, or visit www.dorken.com.

Technical Data

| | | |
|---------------------------------------|---|---|
| Product name | DELTA®-FASSADE SA | |
| Color | black | |
| Material | high strength spun-bonded polypropylene (PP) fabric with UV stable acrylic coating | |
| Adhesive coating | Full surface coating with vapor permeable pressure-sensitive adhesive | |
| Vapor permeance | 30 perms [grains/h/ft ² /in Hg] | ASTM E96-05, Proc. A |
| | 50 perms [grains/h/ft ² /in Hg] | ASTM E96-05, Proc. B |
| Water vapor transmission | 214 g/m ² /24 h | ASTM E96-05, Proc. A |
| | 343 g/m ² /24 h | ASTM E96-05, Proc. B |
| Tensile strength | MD 101 lbf | ASTM D5034 |
| | XD 94 lbf | |
| Elongation at break | MD 40 % | ASTM D5034 |
| | XD 58 % | |
| 90° Peel adhesion | Pass | AAMA 711-5.3 (ASTM D3330) |
| Accelerated aging (UV) | Pass | AAMA 711-5.4 |
| Elevated temperature | Pass (Level 3) | AAMA 711-5.5 |
| Thermal cycling | Pass | AAMA 711-5.6 |
| Adhesion after water immersion | Pass | AAMA 711-5.8 |
| Air permeance | < 0.02 l/(s x m ²) @ 75 Pa | ASTM E2178 |
| Water resistance hydrostatic pressure | Pass 60 minute Grade D building paper equivalent | ASTM D779-03 |
| Flame spread | 10 | ASTM E84-18 |
| | NFPA Class A; IBC Class A | |
| Smoke developed | 95 | ASTM E84-18 |
| | NFPA Class A; IBC Class A | |
| Service temperature | -40 °F to +176 °F (-40 °C to +80 °C) | |
| Application temperature | Minimum 40 °F (5 °C) | |
| Roll weight | approx. 44 lb (20 kg) | |
| Roll length | 115 ft (35 m) | |
| Roll width | 4' 11" ft (1.5 m) | |
| Maximum UV (sunlight) exposure | Always cover as soon as possible. Maximum exposure 30 weeks (prior to installation of cladding) | |
| Service life expectancy | > 25 years, if installed behind cladding systems that have open joints of up to 2" (50 mm) width which expose no more than 40% of entire façade surface | |
| DELTA® Accessories | DELTA®-FASSADE TAPE 2 1/2" x 65' 7" (10 / box) DELTA®-FASSADE FLASHING 4" x 65' 7" (6 / box) DELTA®-FASSADE FLASHING 9" x 65' 7" (2 / box) DELTA®-TILAXX 310 ml (10.9 lf oz) / cartridge DELTA®-THAN 310 ml (10.9 lf oz) / cartridge and 20.48 fl.oz. (600 ml)(sausage) | Working temperature from 40 °F to 104 °F (+5 °C to 40 °C) |