



DELTA®-REFLEX Technical Data Sheet

MATERIAL

DELTA®-REFLEX is made out of a vapor-impermeable, highly reflective and corrosion-resistant aluminum layer laminated between a transparent polyester film and a grid-reinforced polyethylene film.

PROPERTIES

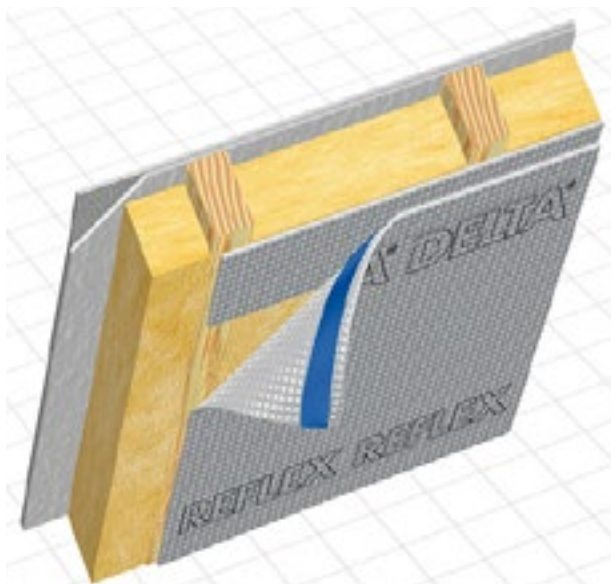
DELTA®-REFLEX is completely impermeable to water vapor. This highly effective barrier stops any vapor diffusion and thus helps to prevent wetting and damage of thermal insulation and the building enclosure throughout the lifetime of the structure. DELTA®-REFLEX enhances the effectiveness of thermal insulation by up to 10%. The 4-ply membrane achieves 50% heat reflectance (certified by Fraunhofer Institute, Germany). Its internal aluminum layer also shields off hazardous electromagnetic radiation, and creates a 100% air- and vapor-tight seal. With its extraordinary tensile strength and an excellent fire rating (B1 - DIN 4102) this product is unmatched in its performance.

APPLICATION

The unique structure and material composition of DELTA®-REFLEX with outstanding flexibility make this contractor-friendly product easy to handle. The extremely high tensile strength prevents tearing during installation. The flexible material allows for quick installations even in difficult places.

Technical Data

| | | |
|--------------------|---------------------------------------|----------------------|
| Product name | DELTA®-REFLEX | |
| Fire properties | Highly fire resistant: B1 | DIN 4102 |
| | (Z-PA-III/2.1268) | |
| Tensile strength | approx. 450 N/5 cm in both directions | DIN 53 354 |
| Sd value | Over 150 m | ASTM E96-05, Proc. A |
| Temperature range | -40 °F to +176 °F | |
| | (-40 °C to +80 °C) | |
| Mass per unit area | approx. 180g/m ² | |
| Roll weight | approx. 13.5kg | |
| Roll length | 82 ft (25 m) | |
| | 164 ft (50 m) | |
| Roll width | 4.92 ft (1.5 m) | |
| | 9.80 ft (3 m) | |



DELTA® products support sustainable and energy-efficient building practices, including efforts toward achieving LEED® certification (LEED® for New Construction & Major Renovations, LEED® for Core and Shell, LEED® for Existing Buildings and LEED® for Homes).

For technical support, call our technical support team at 1-888-4DELTA4 (1-888-433-5824) extension 326, or visit www.cosella-dorcken.com.