

EN ROUTE TO A NEW STANDARD EASING TRANSITIONS THROUGH TECHNICAL SUPPORT AND PERFORMANCE



Jerry Gareau is a Senior Estimator and Project Manager for Sealant Technology Services Inc., a commercial construction company in the greater Philadelphia area. He has spent more than 20 years managing the installation of commercial air and moisture barriers on projects with different levels of complexity and detail. Through his work with numerous materials and manufacturers, he has learned that scheduling and weather have an impact on everything when installing moisture barriers. The more detailed the project, the tougher the challenges. Jerry says the most critical components to his success are “easy product installation and excellent supply chain support – so our challenges become non-issues.”

THE DIFFERENCE IS IN THE DETAILS

Regular installation of air and moisture barriers is easy. The tricky part is working anywhere where there are angles and multiple transitions, specifically windows, doors, and roofs. And working with rain screening is a whole other topic in itself. Jerry has seen it all during his time in the industry and he suggests that the more detailed the job, the higher the bid needs to be to cover any issues you might experience along the way. Using a product with reliable and predictable performance that you can trust helps to keep bids, as well as stress levels, lower.

When choosing the right material for the job, Jerry trusts that his architect's recommendation is based on how much air and moisture he wants to pass through the wall, which is also taken into account when selecting the basis of the design for specification. From a design standpoint, he recommends considering the permeability of the product first and foremost. Moisture within the building enclosure escapes through the membrane via diffusion, and without the proper air and moisture barrier, your building is susceptible to moisture damage.



STICKY SITUATIONS

Contractors are often faced with challenges that are compounded by tight schedules and unpredictable weather. Their main priority is protecting the project from moisture penetration during installation. Unfortunately, in the past, Jerry and his team have experienced situations where the fluid-applied membrane details have been washed away because of heavy rain during an installation, or where sheet membranes have come un-adhered because of moisture getting behind the exposed edges. With issues like these, repairs can be costly blows to any job.

Fortunately, DELTA®-VENT SA doesn't use liquid details. Actually, it's one of the few air and moisture barriers out there that uses sheet details instead. It has an air- and water-tight adhesive edge that allows it to fully adhere to itself, eliminating the risk of leaks and improving the performance of the building enclosure with increased airtightness.

DELTA®-VENT SA has the only self-adhering WRB and air barrier with the security of a self-adhesive edge lap, allowing for easy installation. With its ability to adhere to concrete, masonry, OSB, plywood, or exterior-grade drywall, it's a versatile product for any job. Fully adhered membranes are less prone to leaks that are all too common with other types of barriers, and using a membrane with full adhesion maximizes air tightness and minimizes fastener penetrations.

DELTA®-VENT SA maintains a high vapor permeability and has a full surface coating of a high-tack adhesive for bonding to common substrates. The split release liner makes application less of a hassle, but most importantly, DELTA®-VENT SA is easy and it works.

AN EASY STANDARD

First and foremost, your building materials need to be easy to install, but they also need to be flexible.

Jerry explains that "architects need flexibility in design and contractors need flexibility in their products – you can't be locked down to one material." Jerry was able to take a look at some of the data sheets and testing provided by his Dörken rep, where he noted that DELTA®-VENT SA was "on the same level or a little bit better in some categories than competitive products."

For Jerry, technical support and performance were key, and DELTA®-VENT SA provided on both accounts. Being able to get answers to your questions in person while on a job site is critical at all times throughout a project. Equally important is ease of use. Jerry specifically appreciated the benefit of working with a large roll, allowing him to cover more surface area in less time.



ROUTE 9 LIBRARY INNOVATION CENTER

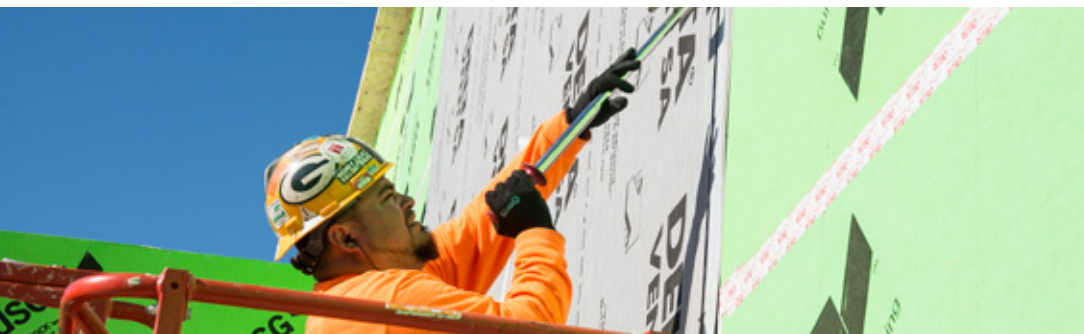
The Route 9 Library Innovation Center is part of community redevelopment efforts in New Castle County, Delaware. Jerry and his team were brought on to the project for their knowledge and expertise in air barrier membrane installation.

The state-of-the-art, 21-million-dollar project has received substantial state funding and features a high-tech backdrop. The 12-acre library will house an innovation campus that will serve the community in many ways. The library measures in at 40,000 square feet and consists of an L-shaped building with traditional library components like reading rooms, as well an area for children's activities. Other features include:

- Community gathering spaces including a cafe, several classrooms and a Lego® room
- A space designed to foster creativity in young writers, called a scriptorium
- A room designed to accommodate older patrons with comfortable seating and old-fashioned leather books
- A sensory room designed to accommodate children who have autism

The Route 9 Library Project was Jerry's first time using DELTA®-VENT SA and overall he had a positive experience with it. Dörken was helpful and the materials they needed for the job arrived quickly. "For me as a contractor, the support is critical," Jerry says. "When we did the Route 9 Library project, Dörken and everyone in their chain was very helpful. Questions come up instantly and installers need answers as fast as we can get them – because you can't slow the project down. That's what really drove me to want to go back to DELTA®."

"For me as a contractor, the support is critical," Jerry says. "When we did the Route 9 Library project, Dörken and everyone in their chain was very helpful. Questions come up instantly and installers need answers as fast as we can get them – because you can't slow the project down. That's what really drove me to want to go back to DELTA®."





EASY TO USE

As a contractor, time equals money and working with difficult materials can slow a project down. For Jerry, his experience working with DELTA®-VENT SA on the Route 9 Library Project went off without a hitch. He attributes his success with the build to an easy installation process as well as continuous support from his rep.

During the build, Jerry was able to experience working with some of the accessories that are available with DELTA®-VENT SA. For detailing rough openings he used DELTA®-FLASHING and DELTA®-FLEXX-BAND sealing tape.

"I would highly recommend using the DELTA®-VENT SA," he says. "For me, ease of use is always key, and DELTA®-VENT SA is very easy to use and the support behind it is very good. Those are the two critical things to me when choosing materials for the job."



**Sealant
Technology
Services**

"I would highly recommend using the DELTA®-VENT SA. For me, ease of use is always key, and DELTA®-VENT SA is very easy to use and the support behind it is very good. Those are the two critical things to me when choosing materials for the job."

Jerry Gareau

