

SUBSTANTIAL EFFORT HAS BEEN MADE TO ENSURE THAT THE INFORMATION IN THIS DETAIL DRAWING IS ACCURATE. DÖRKEN SYSTEMS INC. CANNOT ACCEPT RESPONSIBILITY FOR ANY ERRORS OR OVERSIGHTS IN THE USE OF THIS MATERIAL OR IN THE PREPARATION OF ARCHITECTURAL OR ENGINEERING PLANS. THE DESIGN PROFESSIONAL MUST RECOGNIZE THAT NO DESIGN DETAIL CAN SUBSTITUTE FOR EXPERIENCED ENGINEERING AND PROFESSIONAL JUDGEMENT.

TITLE:

TYPICAL WALL DETAIL WITH DELTA®-DRAIN / DELTA®-FOOTING BARRIER / EXTERIOR EXTRUDED POLYSTYRENE INSULATION CLIMATE ZONE 6 (2012 IECC)

DRAWN BY: Krzysztof Apriasz C. Tech., CPHC®

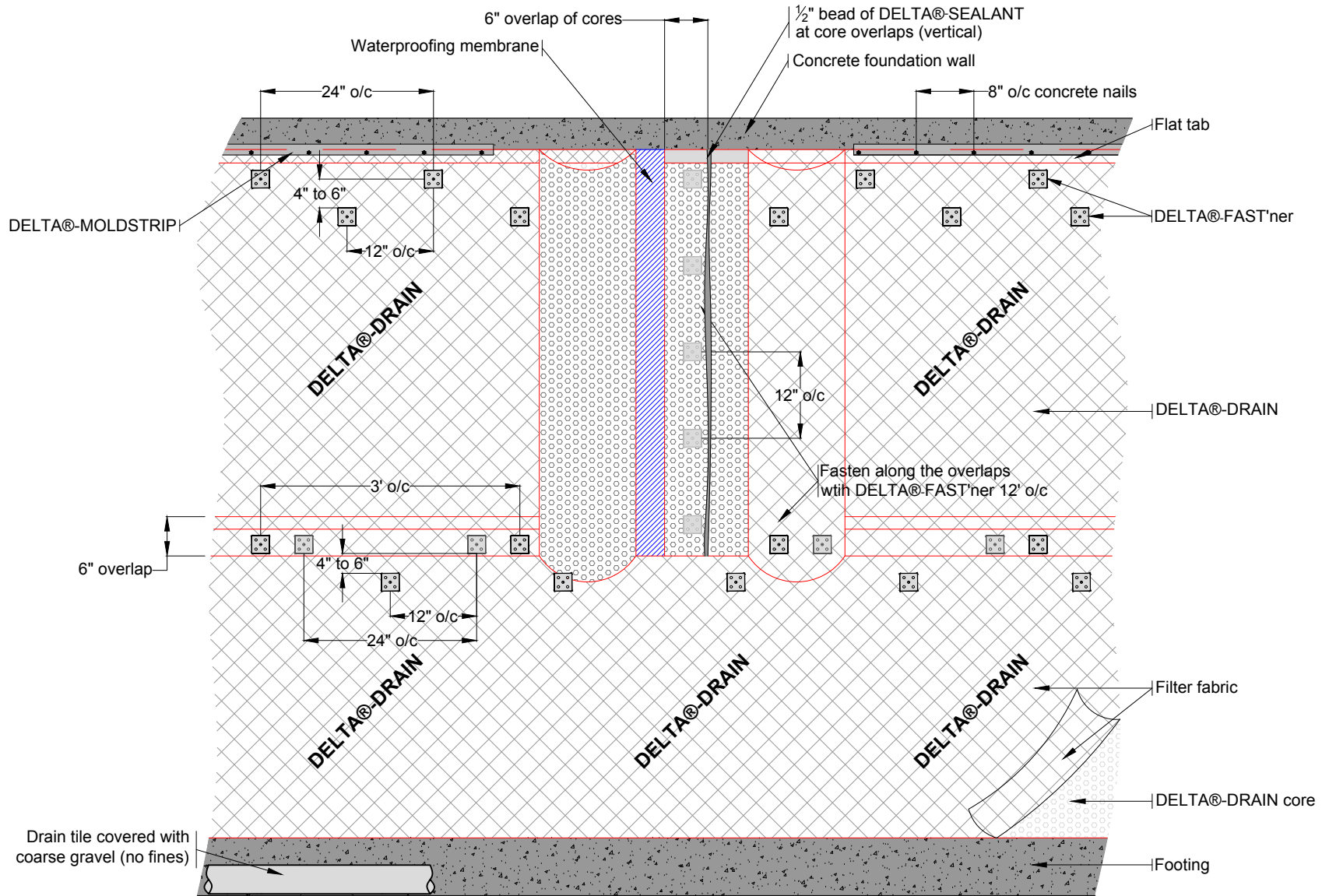
DATE: November 1, 2011
SCALE: NTS

FILE NAME:
DELTA-DRAIN1a

DÖRKEN

DELTA®

4655 DELTA WAY BEAMSVILLE, ON.
L3J 0T6 CANADA



SUBSTANTIAL EFFORT HAS BEEN MADE TO ENSURE THAT THE INFORMATION IN THIS DETAIL DRAWING IS ACCURATE. DÖRKEN SYSTEMS INC. CANNOT ACCEPT RESPONSIBILITY FOR ANY ERRORS OR OVERSIGHTS IN THE USE OF THIS MATERIAL OR IN THE PREPARATION OF ARCHITECTURAL OR ENGINEERING PLANS. THE DESIGN PROFESSIONAL MUST RECOGNIZE THAT NO DESIGN DETAIL CAN SUBSTITUTE FOR EXPERIENCED ENGINEERING AND PROFESSIONAL JUDGEMENT.

TITLE:

VERTICAL/HORIZONTAL OVERLAPS

DRAWN BY: Krzysztof Apiasz C. Tech., CPHC®

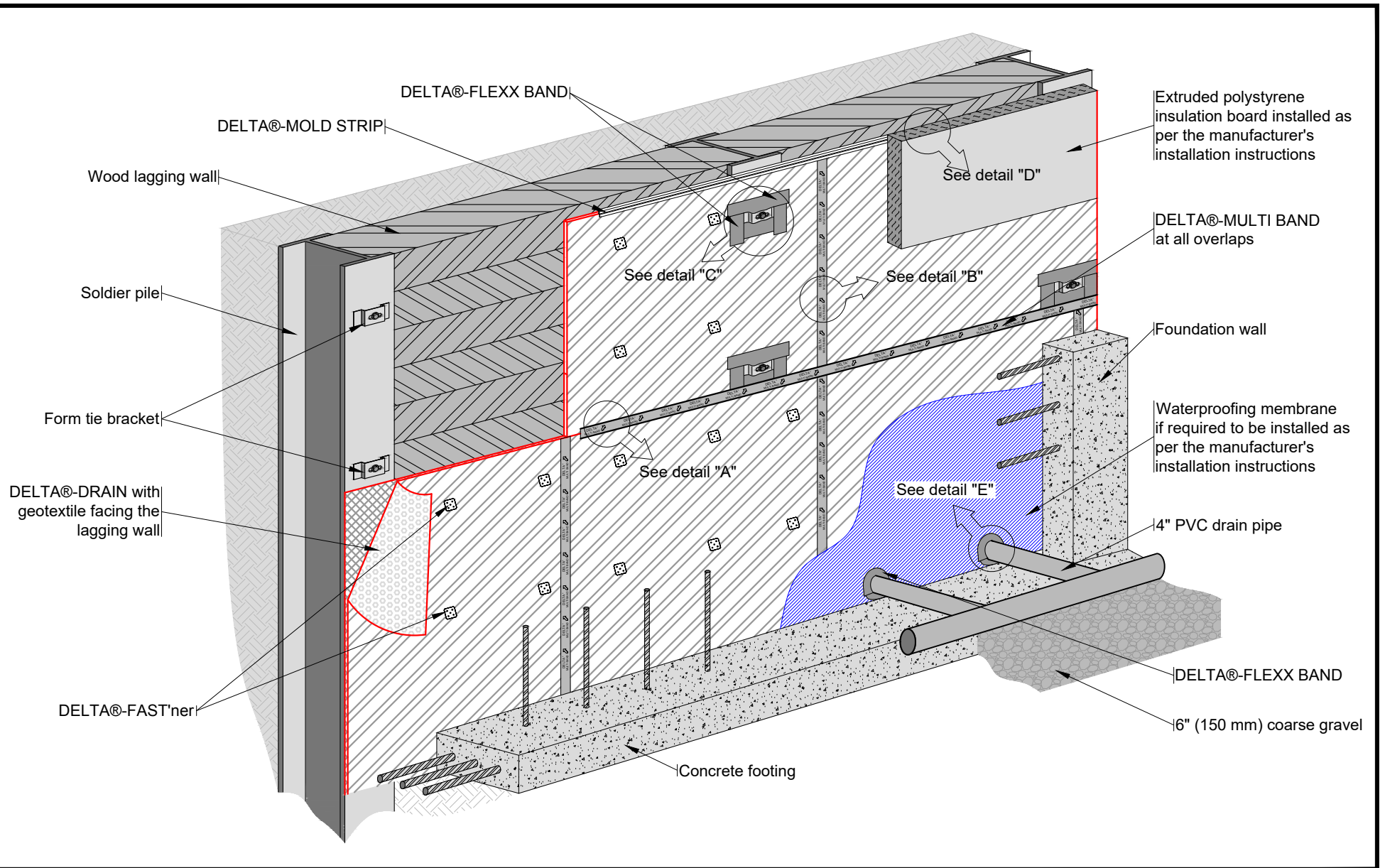
DATE: March 3, 2010
SCALE: NTS

FILE NAME:
DELTA-DRAIN2

DÖRKEN

DELTA®

4655 DELTA WAY BEAMSVILLE, ON.
L3J 0T6 CANADA



SUBSTANTIAL EFFORT HAS BEEN MADE TO ENSURE THAT THE INFORMATION IN THIS DETAIL DRAWING IS ACCURATE. DÖRKEN SYSTEMS INC. CANNOT ACCEPT RESPONSIBILITY FOR ANY ERRORS OR OVERSIGHTS IN THE USE OF THIS MATERIAL OR IN THE PREPARATION OF ARCHITECTURAL OR ENGINEERING PLANS. THE DESIGN PROFESSIONAL MUST RECOGNIZE THAT NO DESIGN DETAIL CAN SUBSTITUTE FOR EXPERIENCED ENGINEERING AND PROFESSIONAL JUDGEMENT.

TYPICAL SOLDIER PILE WALL WITH DELTA®-DRAIN INSTALLATION DETAIL 1 OF 4

DRAWN BY: Krzysztof Apiasz C. Tech., CPHC®

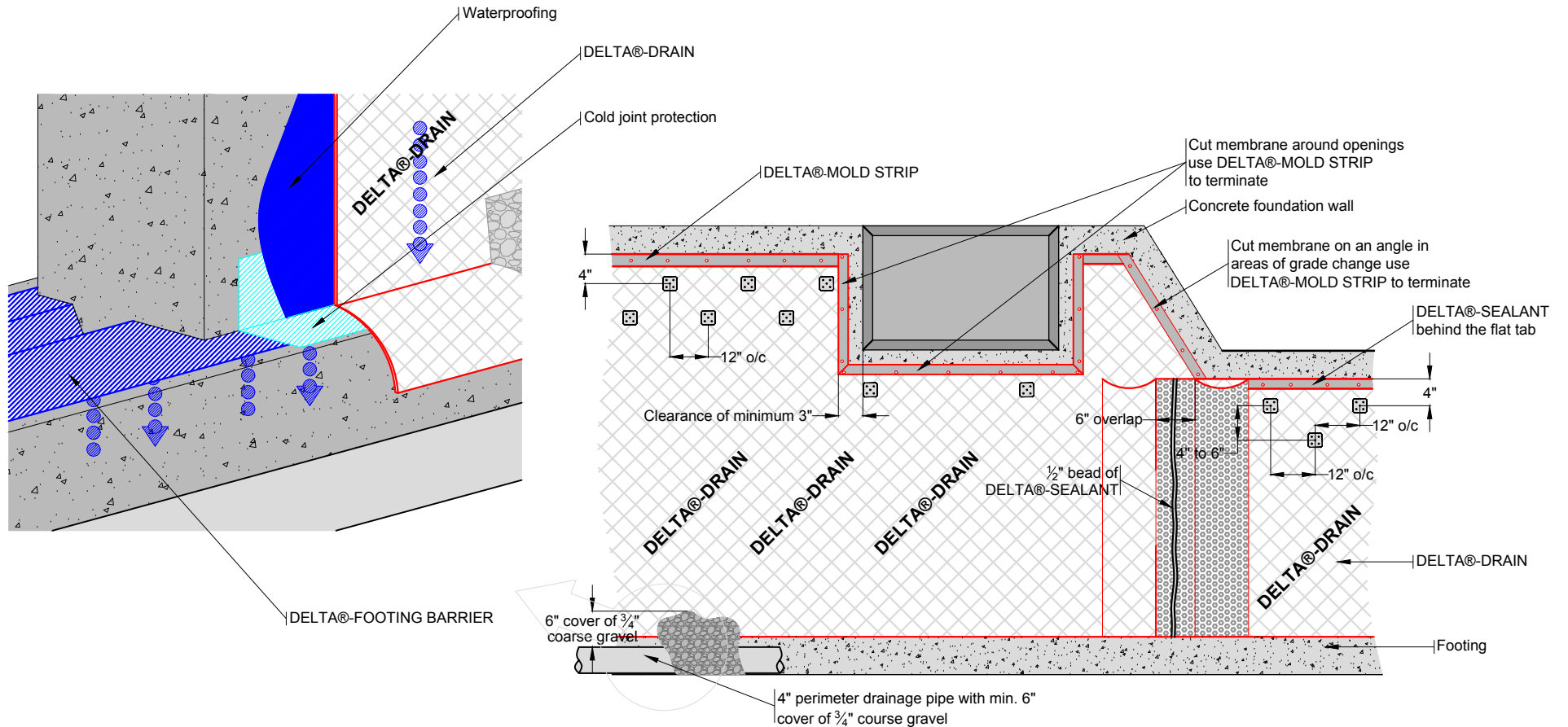
DATE: October 5, 2011
SCALE: NTS

FILE NAME:
DELTA-DRAIN_6

 DÖRKEN

DELTA®

4655 DELTA WAY BEAMSVILLE, ON.
L3J 0T6 CANADA



SUBSTANTIAL EFFORT HAS BEEN MADE TO ENSURE THAT THE INFORMATION IN THIS DETAIL DRAWING IS ACCURATE. DÖRKEN SYSTEMS INC. CANNOT ACCEPT RESPONSIBILITY FOR ANY ERRORS OR OVERSIGHTS IN THE USE OF THIS MATERIAL OR IN THE PREPARATION OF ARCHITECTURAL OR ENGINEERING PLANS. THE DESIGN PROFESSIONAL MUST RECOGNIZE THAT NO DESIGN DETAIL CAN SUBSTITUTE FOR EXPERIENCED ENGINEERING AND PROFESSIONAL JUDGEMENT.

DELTA®-DRAIN INSTALLATION DETAIL ON POURED CONCRETE FOUNDATION WALL

DRAWN BY: Krzysztof Apriasz C. Tech., CPHC®

DATE: March 5, 2010
SCALE: NTS

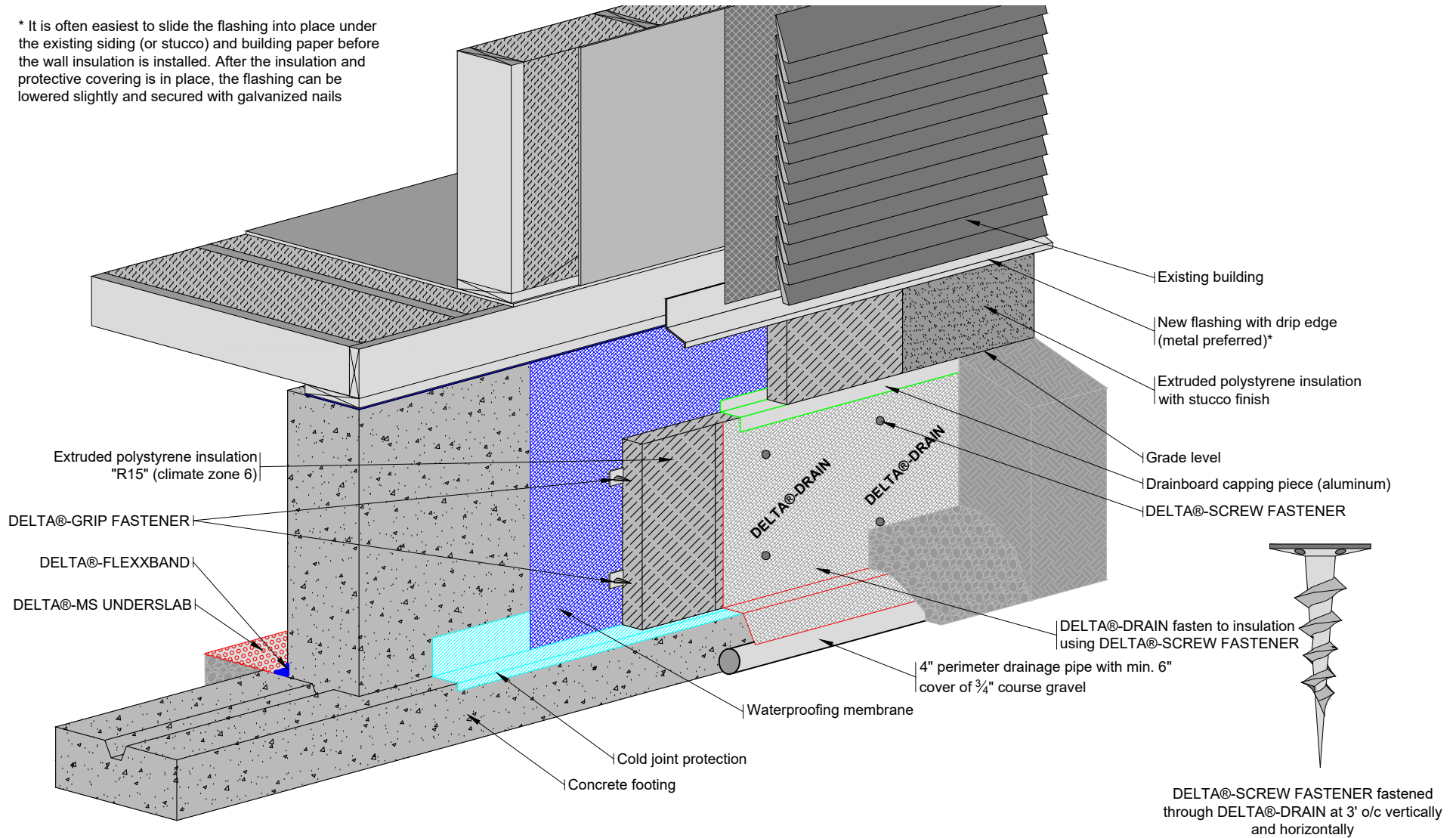
FILE NAME:
DELTA-DRAIN2

DÖRKEN

DELTA®

4655 DELTA WAY BEAMSVILLE, ON.
L3J 0T6 CANADA

* It is often easiest to slide the flashing into place under the existing siding (or stucco) and building paper before the wall insulation is installed. After the insulation and protective covering is in place, the flashing can be lowered slightly and secured with galvanized nails



SUBSTANTIAL EFFORT HAS BEEN MADE TO ENSURE THAT THE INFORMATION IN THIS DETAIL DRAWING IS ACCURATE. DÖRKEN SYSTEMS INC. CANNOT ACCEPT RESPONSIBILITY FOR ANY ERRORS OR OVERSIGHTS IN THE USE OF THIS MATERIAL OR IN THE PREPARATION OF ARCHITECTURAL OR ENGINEERING PLANS. THE DESIGN PROFESSIONAL MUST RECOGNIZE THAT NO DESIGN DETAIL CAN SUBSTITUTE FOR EXPERIENCED ENGINEERING AND PROFESSIONAL JUDGEMENT.

TITLE:

TYPICAL CRAWLSPACE RETROFIT DETAIL WITH EXTERIOR EXTRUDED POLYSTYRENE INSULATION CLIMATE ZONE 6 (2012 IECC)

DRAWN BY: Krzysztof Apiasz C. Tech., CPHC®

DATE: November 3, 2011
SCALE: NTS

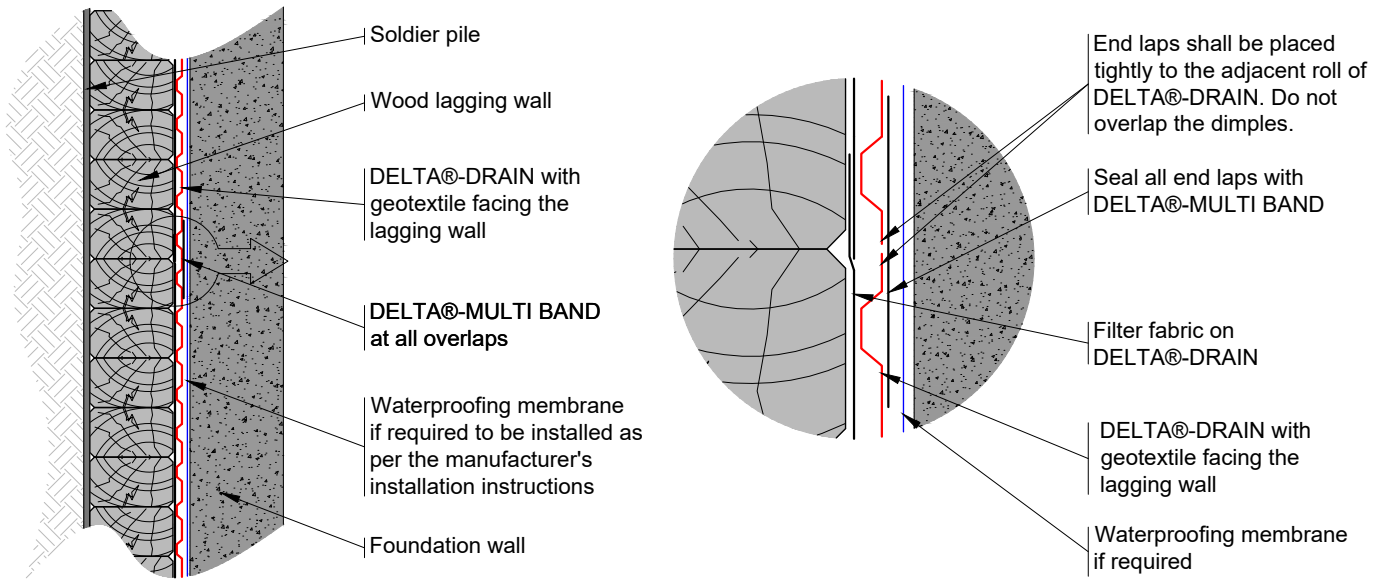
FILE NAME:
DELTA-DRAIN_1b

 DÖRKEN

DELTA®

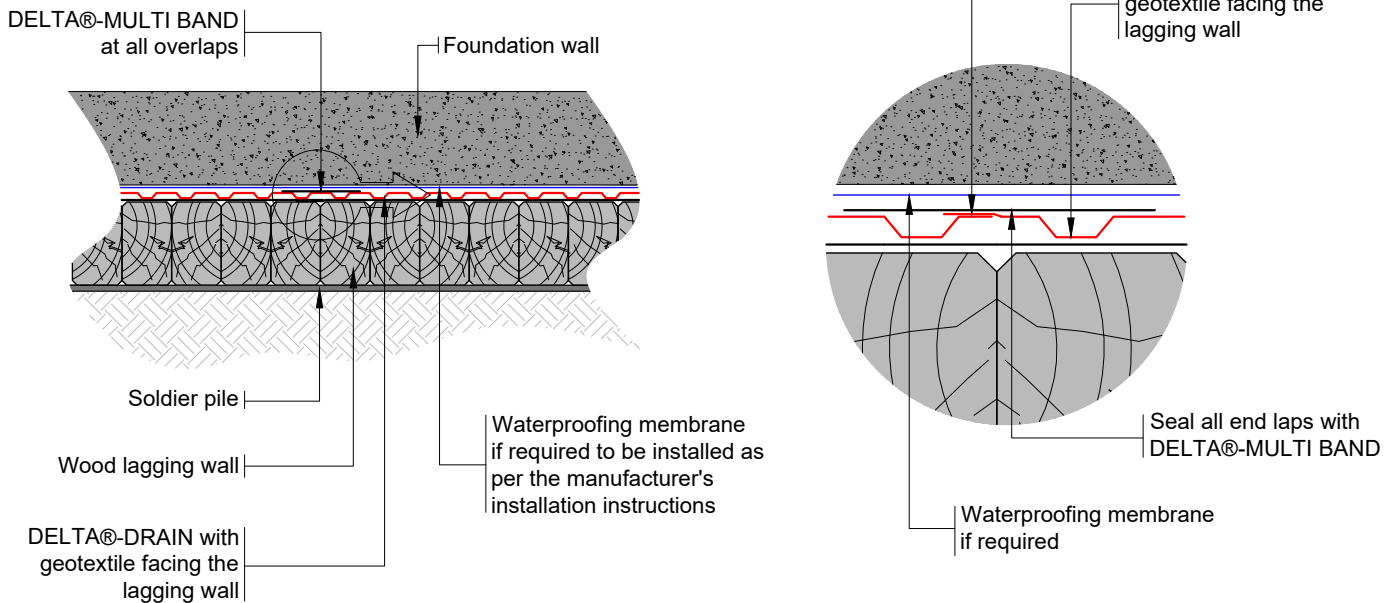
4655 DELTA WAY BEAMSVILLE, ON.
L3J 0T6 CANADA

DETAIL 'A" HORIZONTAL OVERLAPS



DETAIL 'B" VERTICAL OVERLAPS

Side laps shall be placed tightly to the adjacent roll of DELTA®-DRAIN. Overlap the flat tab only on to the adjacent roll.



SUBSTANTIAL EFFORT HAS BEEN MADE TO ENSURE THAT THE INFORMATION IN THIS DETAIL DRAWING IS ACCURATE. DÖRKEN SYSTEMS INC. CANNOT ACCEPT RESPONSIBILITY FOR ANY ERRORS OR OVERSIGHTS IN THE USE OF THIS MATERIAL OR IN THE PREPARATION OF ARCHITECTURAL OR ENGINEERING PLANS. THE DESIGN PROFESSIONAL MUST RECOGNIZE THAT NO DESIGN DETAIL CAN SUBSTITUTE FOR EXPERIENCED ENGINEERING AND PROFESSIONAL JUDGEMENT.

TITLE:

TYPICAL SOLDIER PILE WALL WITH DELTA®-DRAIN INSTALLATION
DETAIL 2 OF 4

DRAWN BY: Krzysztof Apiasz C. Tech., CPHC®

Date: October 5, 2011

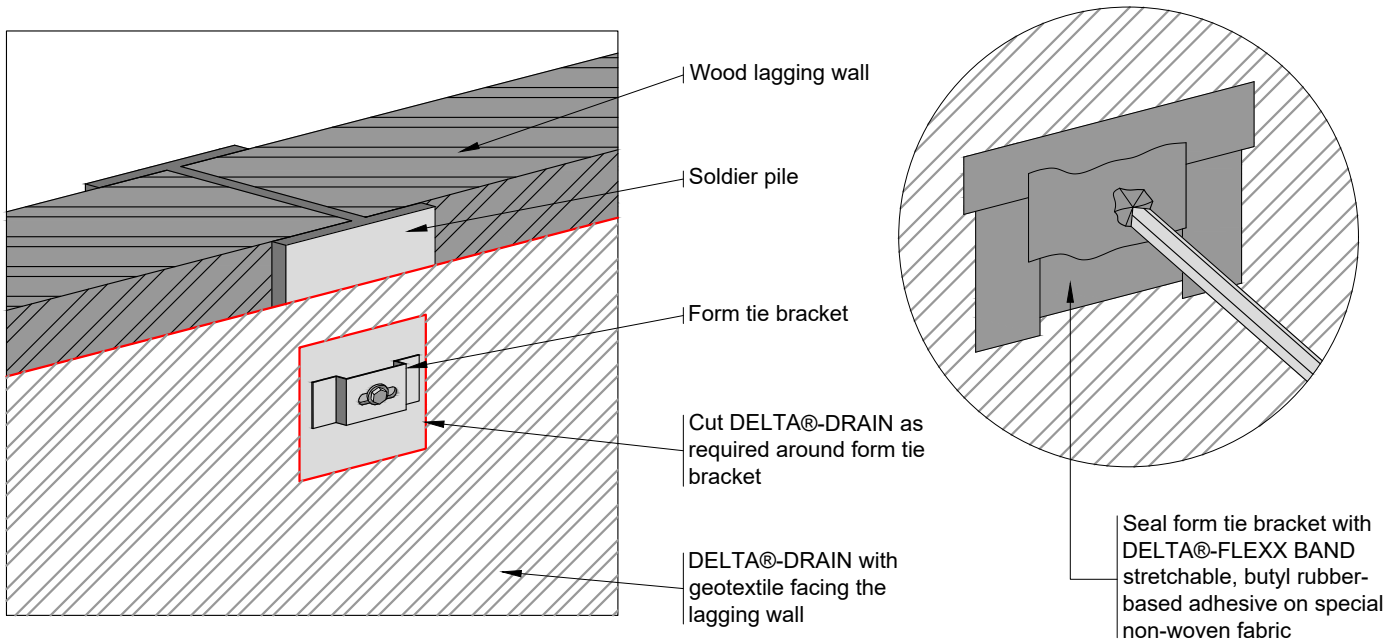
File Name: DELTA-DRAIN_6a

DÖRKEN

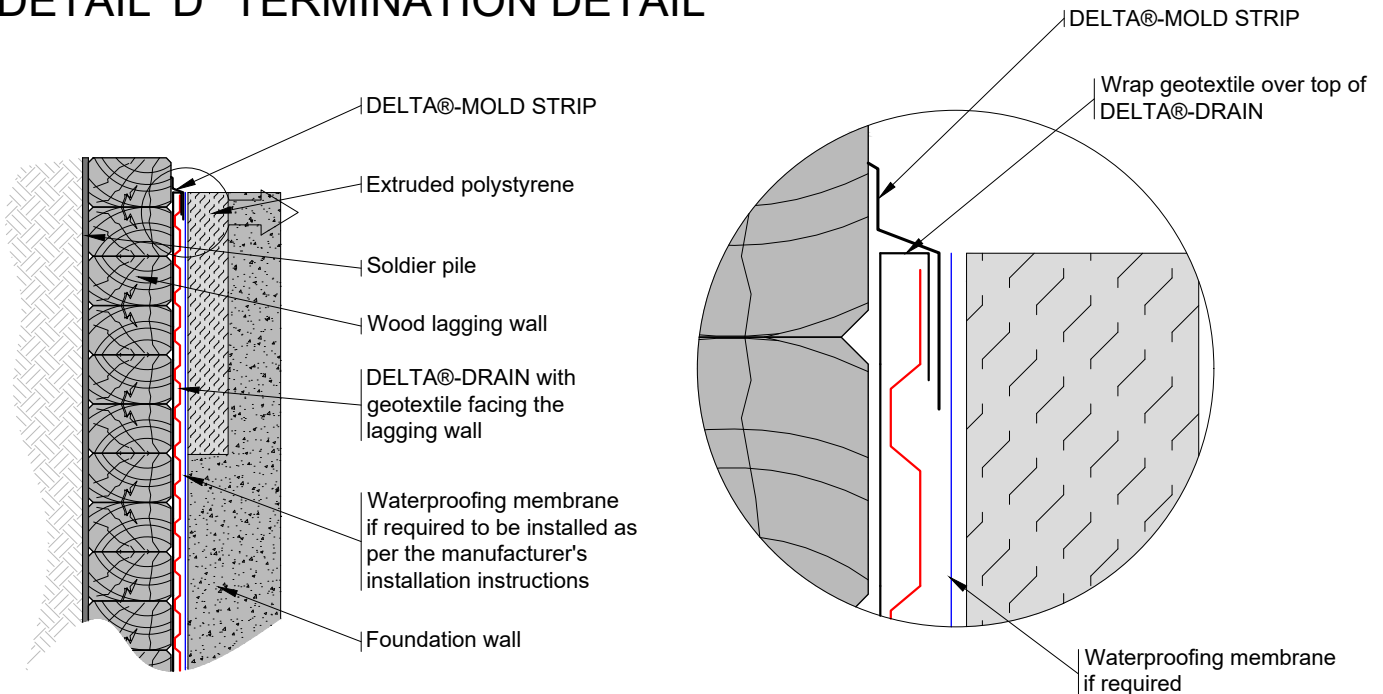
DELTA®

4655 DELTA WAY BEAMSVILLE, ON.
L3J 0T6 CANADA

DETAIL 'C' TIE BRACKET DETAIL



DETAIL 'D' TERMINATION DETAIL



SUBSTANTIAL EFFORT HAS BEEN MADE TO ENSURE THAT THE INFORMATION IN THIS DETAIL DRAWING IS ACCURATE. DÖRKEN SYSTEMS INC. CANNOT ACCEPT RESPONSIBILITY FOR ANY ERRORS OR OVERSIGHTS IN THE USE OF THIS MATERIAL OR IN THE PREPARATION OF ARCHITECTURAL OR ENGINEERING PLANS. THE DESIGN PROFESSIONAL MUST RECOGNIZE THAT NO DESIGN DETAIL CAN SUBSTITUTE FOR EXPERIENCED ENGINEERING AND PROFESSIONAL JUDGEMENT.

TITLE:

TYPICAL SOLDIER PILE WALL WITH
DELTA@-DRAIN INSTALLATION
DETAIL 3 OF 4

DRAWN BY: Krzysztof Apriasz C. Tech., CPHC®

Date: October 5, 2011

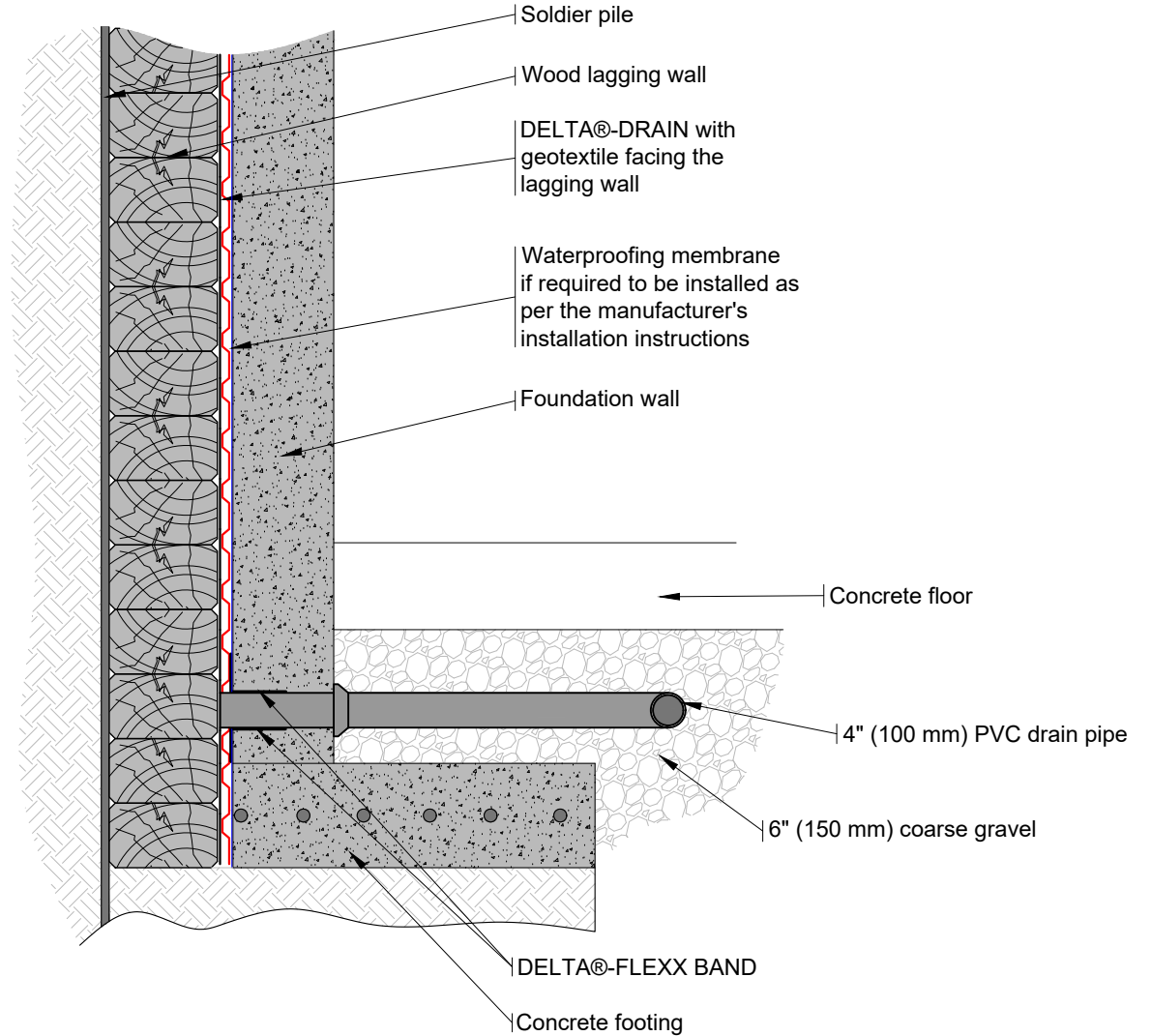
File Name: DELTA-DRAIN_6B

 **DÖRKEN**

DELTA®

4655 DELTA WAY BEAMSVILLE, ON.
L3J 0T6 CANADA

DETAIL "E" BOTTOM OF WALL DETAIL



SUBSTANTIAL EFFORT HAS BEEN MADE TO ENSURE THAT THE INFORMATION IN THIS DETAIL DRAWING IS ACCURATE. DÖRKEN SYSTEMS INC. CANNOT ACCEPT RESPONSIBILITY FOR ANY ERRORS OR OVERSIGHTS IN THE USE OF THIS MATERIAL OR IN THE PREPARATION OF ARCHITECTURAL OR ENGINEERING PLANS. THE DESIGN PROFESSIONAL MUST RECOGNIZE THAT NO DESIGN DETAIL CAN SUBSTITUTE FOR EXPERIENCED ENGINEERING AND PROFESSIONAL JUDGEMENT.

TITLE:

TYPICAL SOLDIER PILE WALL WITH DELTA®-DRAIN INSTALLATION DETAIL 1 OF 4

DRAWN BY: Krzysztof Apriasz C. Tech., CPHC®

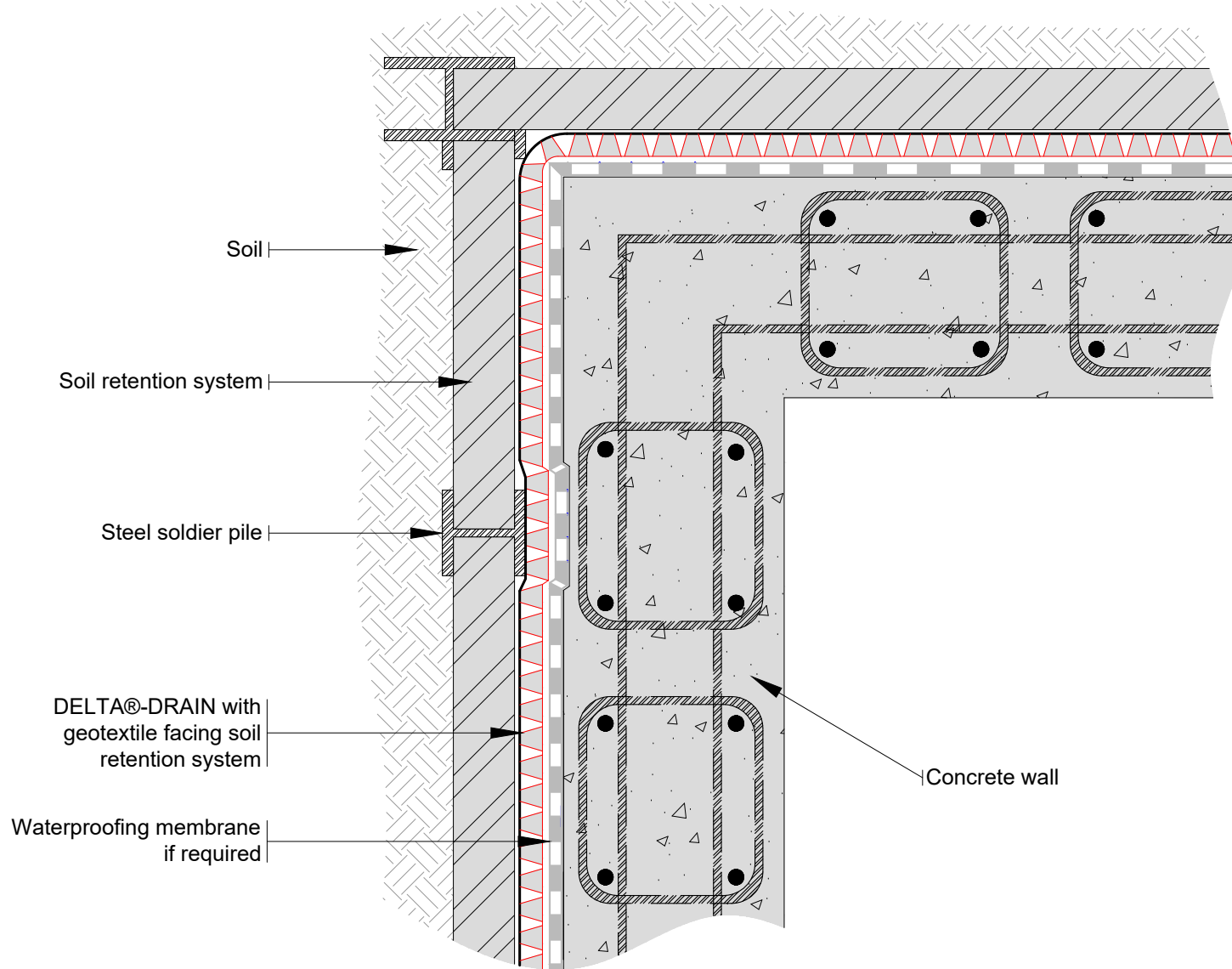
DATE: October 5, 2011
SCALE: NTS

FILE NAME:
DELTA-DRAIN_6

 DÖRKEN

DELTA®

4655 DELTA WAY BEAMSVILLE, ON.
L3J 0T6 CANADA



SUBSTANTIAL EFFORT HAS BEEN MADE TO ENSURE THAT THE INFORMATION IN THIS DETAIL DRAWING IS ACCURATE. DÖRKEN SYSTEMS INC. CANNOT ACCEPT RESPONSIBILITY FOR ANY ERRORS OR OVERSIGHTS IN THE USE OF THIS MATERIAL OR IN THE PREPARATION OF ARCHITECTURAL OR ENGINEERING PLANS. THE DESIGN PROFESSIONAL MUST RECOGNIZE THAT NO DESIGN DETAIL CAN SUBSTITUTE FOR EXPERIENCED ENGINEERING AND PROFESSIONAL JUDGEMENT.

TITLE:

TYPICAL CORNER DETAIL DELTA®-DRAIN

DRAWN BY: Krzysztof Apiasz C. Tech., CPHC®

DATE: February 18, 2011
SCALE: NTS

FILE NAME:
DELTA-DRAIN_5

 DÖRKEN

DELTA®

4655 DELTA WAY BEAMSVILLE, ON.
L3J 0T6 CANADA